



**Andes**  
 GLOBAL TRADING  
 QUALITY | INTEGRITY | TRUST



**Inc. 5000**<sup>2017</sup>  
 LIST OF THE FASTEST-GROWING PRIVATE COMPANIES IN AMERICA.

**SOUTH FLORIDA BUSINESS JOURNAL**

*Top 50 Private Companies Fastest Growing Private Companies 2016 & 2017*



*Entrepreneurial awards*



# NEWSLETTER

August 22/2018

Summary	1
Pork Statistics	2
Pork Price Forecasts	3-7
Beef Statistics	8
Beef Price Forecasts	9-12
Chicken Statistics	13-14
Chicken Forecasts	15-17
Turkey Statistics	18
Turkey Forecasts	19-20
Statistics for South America	21-23
Global Pork Prices	24

## Hogs / Pork

- The second outbreak of African Swine Fever (ASF) in China and the possibility that US and China may find a solution to their current trade conflict caused futures to move sharply higher last week.
- ASF has the potential to dramatically impact global pork markets as China currently has half of the world hog breeding herd and almost half a billion hogs.
- ASF is a devastating disease and if China is not able to control it, it could lead to significant supply losses and force China to rely on imports to make up the shortfall.
- Additionally, if Chinese consumers are afraid to consume domestic pork they will increase their purchases of imported product. This may be a game changing event.

## Broiler / Chicken

- Chicken demand has struggled this summer as both retailers and foodservice operators have largely focused on beef in order to drive traffic.
- It appears that broiler producers have taken note and are taking steps to bring supplies more in line with demand. The broiler hatching flock declined by almost 1 million head last month but it still remains about 2.2% higher than a year ago.
- Current expectation is for broiler slaughter to be 1.5% to 2% higher than a year ago in the near term but if the hatching flock continues to decline we could see smaller than expected supplies in Q4.
- Breast meat prices are weak and could decline further.

## Cattle / Beef

- Fed cattle slaughter last week was estimated at 531,000 head, the highest since mid June and 3.7% higher than the previous year.
- Excellent domestic demand for beef going into the Labor Day weekend has bolstered packer margins and caused them to slaughter cattle more aggressively.
- Despite the increase in slaughter and seasonally higher fed cattle weights the price of fat beef trim has been moving higher, largely because retailers are looking to feature ground beef very aggressively for Labor Day.
- Beef exports to Asian markets continue to increase in double digits, supporting prices for items such as short plates, inside skirts and chuck rolls.

## Turkey / Other Poultry

- Turkey producers significantly reduced the number of poult placements in April, May and June.
- The reduction in placements was likely due to uncertainty about feed costs as well as continued weak demand for whole turkeys
- However, the corn and soybean crops appear to be in excellent shape and this likely improved producer confidence about feed supply availability for later in the year.
- USDA reported that turkey poult placements in July jumped 2.5 million head or 11% from the previous month. They were also 3.8% higher than a year ago. This should bolster turkey supplies for year-end holidays.

# Pork Market - Supply Situation & Outlook

## Weekly Pork Production Statistics

Source: USDA

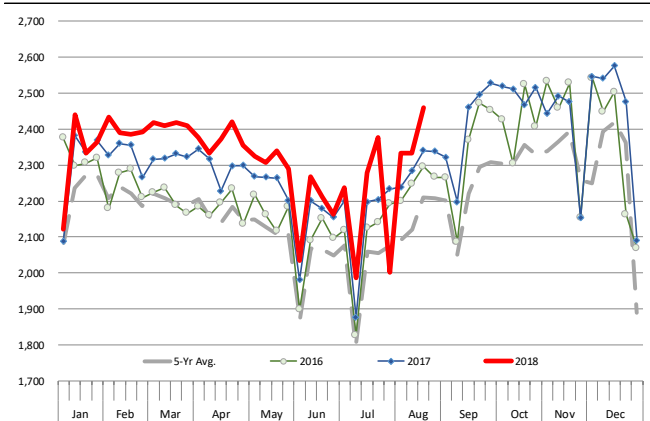
		Slaughter (1000 hd)	% CH.	Dressed Wt LBS	% CH.	Production (Million lbs)	% CH.
Year Ago	19-Aug-17	2,340		207.0		484.6	
This Week	18-Aug-18	2,459	5.1%	207.0	0.0%	509.4	5.1%
Last Week	11-Aug-18	2,333		207.0		482.8	
This Week	18-Aug-18	2,459	5.4%	207.0	0.0%	509.4	5.5%
YTD Last Year	19-Aug-17	74,343		210.5		15,660	
YTD This Year	18-Aug-18	76,315	2.7%	211.9	0.6%	16,172	3.3%

### Quarterly History + Forecasts

Q1 2016	29,262		212.9		6,230	
Q2 2016	28,116		212.1		5,963	
Q3 2016	29,323		208.0		6,100	
Q4 2016	31,539		210.8		6,648	
<b>Annual</b>	<b>118,240</b>	<b>Y/Y % CH.</b>	<b>211.0</b>	<b>Y/Y % CH.</b>	<b>24,941</b>	<b>Y/Y % CH.</b>
Q1 2017	30,178	3.1%	212.4	-0.2%	6,410	2.9%
Q2 2017	29,165	3.7%	210.4	-0.8%	6,137	2.9%
Q3 2017	29,967	2.2%	208.2	0.1%	6,240	2.3%
Q4 2017	32,007	1.5%	212.3	0.7%	6,796	2.2%
<b>Annual</b>	<b>121,317</b>	<b>2.6%</b>	<b>210.9</b>	<b>0.0%</b>	<b>25,584</b>	<b>2.6%</b>
Q1 2018	31,075	3.0%	213.8	0.7%	6,645	3.7%
Q2 2018	29,816	2.2%	212.1	0.8%	6,325	3.1%
Q3 2018	30,896	3.1%	208.8	0.3%	6,451	3.4%
Q4 2018	33,607	5.0%	213.5	0.5%	7,175	5.6%
<b>Annual</b>	<b>125,395</b>	<b>3.4%</b>	<b>212.1</b>	<b>0.6%</b>	<b>26,596</b>	<b>4.0%</b>

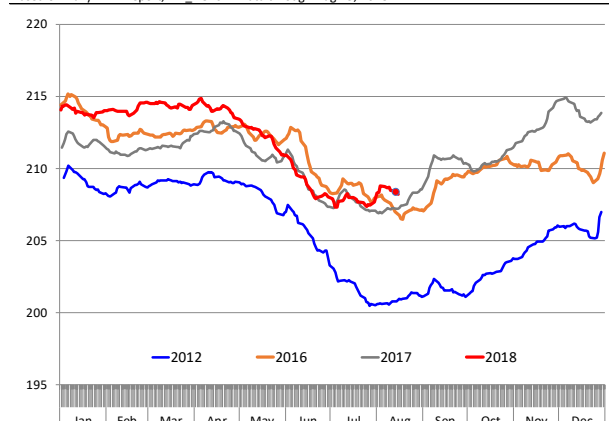
### WEEKLY HOG SLAUGHTER, '000 HEAD

Source: USDA

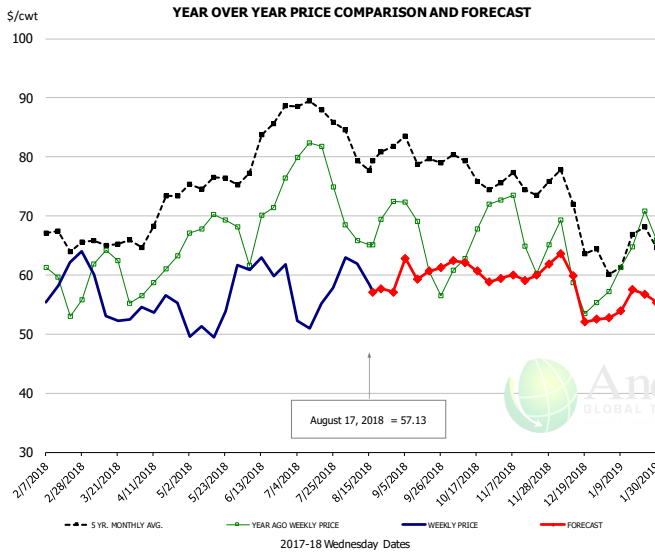


### Barrow/Gilt Dressed Carcass Weights, 5-day Moving Avg. - All hogs

Based on Daily MPR Report, LM\_HG201. Data through Aug 15, 2018



## Ham, 23-27# Trmd Selected Ham, FOB Plant, USDA



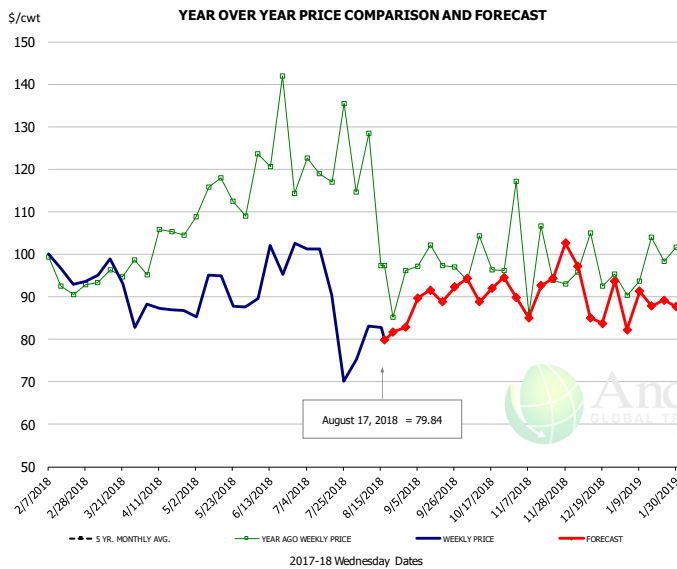
### PRICE HISTORY AND FORECAST

- DOLLARS PER CWT -

	5-YR. AVG	YR. AGO	CURRENT	FORECAST	% CH.
Feb	66.71	57.82	60.35		4.4%
Mar	64.82	60.05	56.02		-6.7%
Apr	68.51	59.06	54.48		-7.8%
May	75.03	67.94	50.79		-25.2%
Jun	78.69	66.60	61.42		-7.8%
Jul	87.32	78.59	53.62		-31.8%
8-Aug		65.85	61.91		-6.0%
17-Aug		65.07	57.13		-12.2%
29-Aug				57.10	-21.2%
Aug	81.07	67.33		58.00	-13.9%
Sep	78.03	63.74		61.00	-4.3%
Oct	75.53	66.19		61.00	-7.8%
Nov	74.87	66.48		60.00	-9.7%
Dec	69.31	59.78		57.00	-4.6%
Jan	62.78	62.50		55.00	-12.0%

**\*Due to the recent tariff and pork production in the US, there might be a disruption in ham projections.**

## Ham, Inner Shank, FOB Plant, USDA

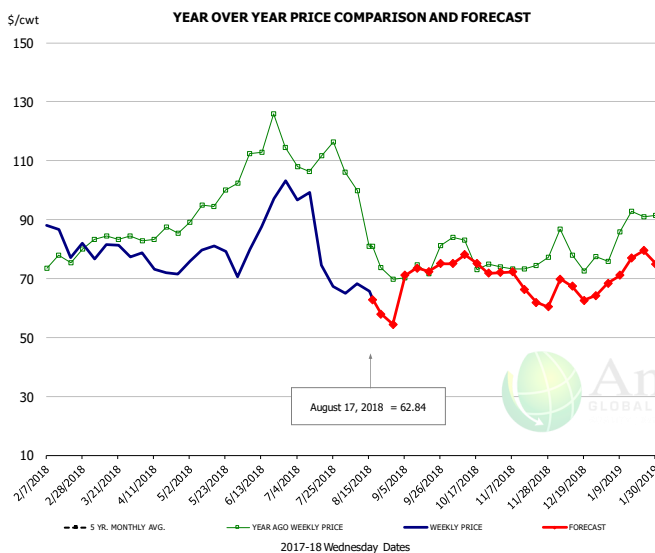


### PRICE HISTORY AND FORECAST

- DOLLARS PER CWT -

	5-YR. AVG	YR. AGO	CURRENT	FORECAST	% CH.
Feb	96.36	97.40	95.63		-1.8%
Mar	97.05	97.32	91.94		-5.5%
Apr	101.46	101.29	87.77		-13.3%
May	107.03	111.79	88.00		-21.3%
Jun	117.48	118.98	90.75		-23.7%
Jul	126.39	120.57	83.12		-31.1%
8-Aug		128.49	83.19		-35.3%
17-Aug		97.31	79.84		-18.0%
29-Aug		97.31		82.85	-14.9%
Aug	108.29	99.62		83.00	-16.7%
Sep	110.13	99.43		90.00	-9.5%
Oct	112.01	98.45		93.00	-5.5%
Nov	102.49	95.16		90.00	-5.4%
Dec	99.02	96.14		93.00	-3.3%
Jan	94.68	97.71		89.00	-8.9%

## Ham, Outer Shank, FOB Plant, USDA

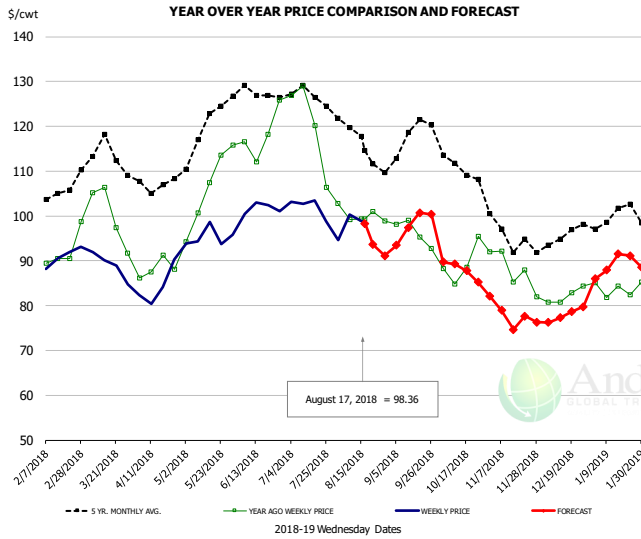


### PRICE HISTORY AND FORECAST

- DOLLARS PER CWT -

	5-YR. AVG	YR. AGO	CURRENT	FORECAST	% CH.
Feb	78.59	76.52	80.10		4.7%
Mar	81.57	82.65	79.95		-3.3%
Apr	87.99	84.27	71.59		-15.1%
May	94.83	95.41	77.70		-18.6%
Jun	109.22	113.11	89.43		-20.9%
Jul	112.56	109.58	83.07		-24.2%
8-Aug		99.73	68.25		-31.6%
17-Aug		80.90	62.84		-22.3%
29-Aug		80.90		54.49	-32.6%
Aug	94.19	85.98		65.00	-24.4%
Sep	81.02	71.09		73.00	2.7%
Oct	86.31	76.29		75.00	-1.7%
Nov	77.63	74.72		66.00	-11.7%
Dec	71.31	76.96		66.00	-14.2%
Jan	77.45	85.15		74.00	-13.1%

## Loin, 1/4 Trimmed Loin VAC, FOB Plant, USDA

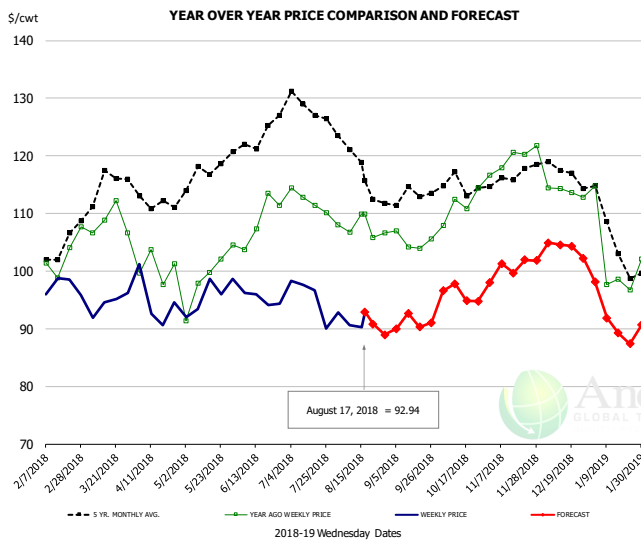


### PRICE HISTORY AND FORECAST

- DOLLARS PER CWT -

	5-YR. AVG	YR. AGO	CURRENT	FORECAST	% CH.
Feb	104.45	89.63	89.29		-0.4%
Mar	113.06	99.46	89.02		-10.5%
Apr	106.48	88.05	83.04		-5.7%
May	118.04	104.30	95.89		-8.1%
Jun	126.62	117.69	101.46		-13.8%
Jul	126.27	119.37	97.82		-18.1%
8-Aug		99.19	100.25		1.1%
17-Aug		99.30	98.36		-0.9%
29-Aug		98.90		91.13	-7.9%
Aug	116.55	100.76		97.00	-3.7%
Sep	115.58	95.20		98.00	2.9%
Oct	110.13	89.14		88.00	-1.3%
Nov	95.07	85.71		78.00	-9.0%
Dec	94.49	82.45		78.00	-5.4%
Jan	98.84	83.52		89.00	6.6%

## Picnic, Picnic Cushion Meat Combo, FOB Plant, USDA

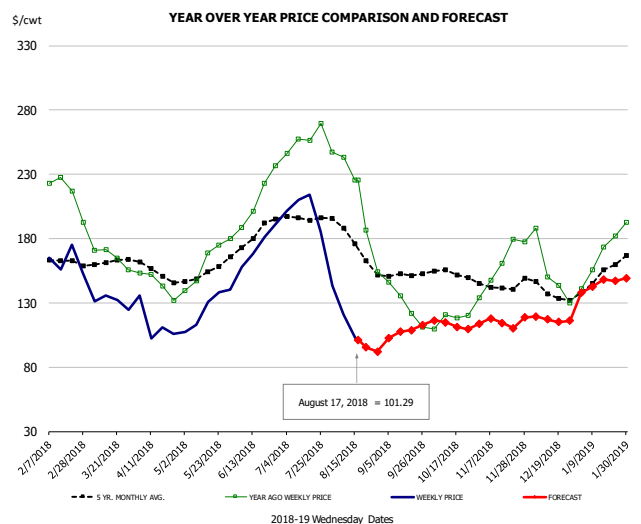


### PRICE HISTORY AND FORECAST

- DOLLARS PER CWT -

	5-YR. AVG	YR. AGO	CURRENT	FORECAST	% CH.
Feb	100.89	98.54	96.04		-2.5%
Mar	114.51	105.76	93.97		-11.1%
Apr	111.81	99.38	93.53		-5.9%
May	115.08	99.50	94.84		-4.7%
Jun	122.70	108.28	95.67		-11.7%
Jul	126.01	111.71	92.77		-17.0%
8-Aug		106.77	90.56		-15.2%
17-Aug		109.88	92.94		-15.4%
29-Aug		106.61		88.94	-16.6%
Aug	118.40	107.33		93.00	-13.4%
Sep	112.11	104.50		91.00	-12.9%
Oct	114.33	111.66		96.00	-14.0%
Nov	115.84	118.16		101.00	-14.5%
Dec	116.82	114.89		104.00	-9.5%
Jan	104.81	100.33		92.00	-8.3%

## Belly, Derind Belly 9-13#, FOB Plant, USDA

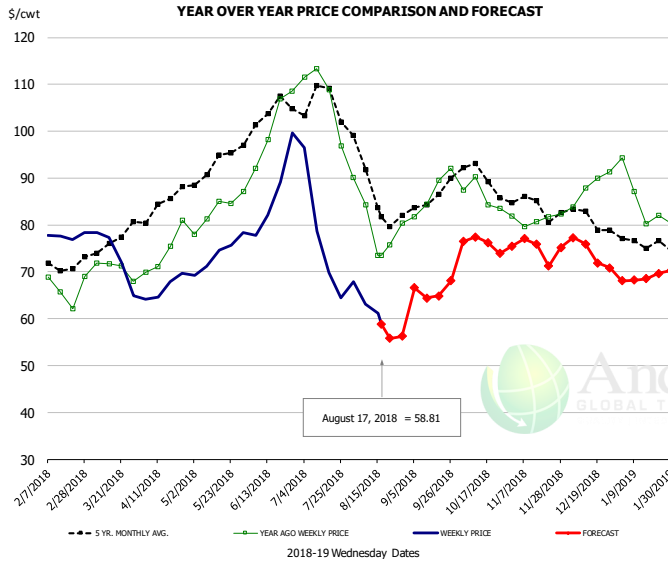


### PRICE HISTORY AND FORECAST

- DOLLARS PER CWT -

	5-YR. AVG	YR. AGO	CURRENT	FORECAST	% CH.
Feb	162.69	216.78	162.13		-25.2%
Mar	160.97	168.90	133.73		-20.8%
Apr	152.30	143.77	106.51		-25.9%
May	150.96	160.70	124.74		-22.4%
Jun	181.63	219.23	171.90		-21.6%
Jul	194.62	256.47	194.29		-24.2%
8-Aug		243.21	120.86		-50.3%
17-Aug		225.57	101.29		-55.1%
29-Aug		154.05		92.14	-40.2%
Aug	171.76	193.19		101.00	-47.7%
Sep	151.25	135.34		108.00	-20.2%
Oct	150.98	117.03		113.00	-3.4%
Nov	141.96	161.13		117.00	-27.4%
Dec	135.82	144.34		117.00	-18.9%
Jan	149.62	160.63		144.00	-10.4%

## Trim, Picnic Meat Combo Cushion Out, FOB Plant, USDA

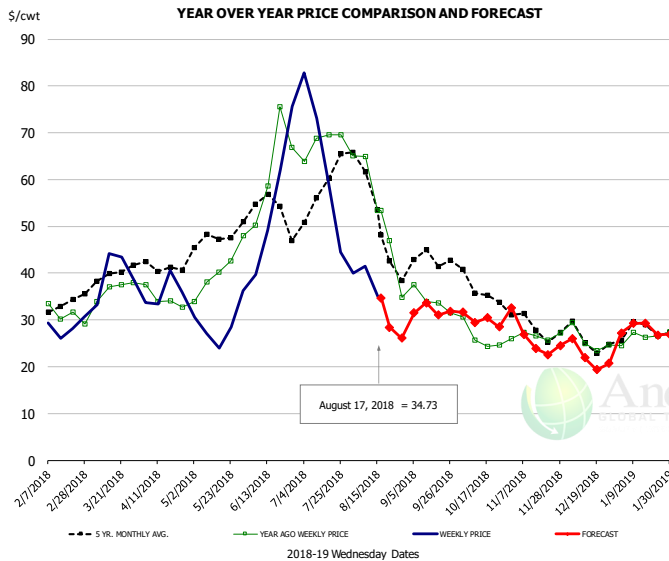


### PRICE HISTORY AND FORECAST

- DOLLARS PER CWT -

	5-YR. AVG	YR. AGO	CURRENT	FORECAST	% CH.
Feb	71.14	65.22	77.69		19.1%
Mar	75.81	71.23	72.07		1.2%
Apr	83.31	74.81	65.64		-12.3%
May	91.44	82.92	72.77		-12.2%
Jun	101.13	97.01	84.03		-13.4%
Jul	104.20	103.80	74.98		-27.8%
8-Aug		84.32	63.10		-25.2%
17-Aug		73.51	58.81		-20.0%
29-Aug		80.33		56.24	-30.0%
Aug	87.00	80.15		61.00	-23.9%
Sep	84.69	86.68		66.00	-23.9%
Oct	89.19	85.45		76.00	-11.1%
Nov	83.87	81.12		75.00	-7.5%
Dec	81.61	87.11		74.00	-15.0%
Jan	75.96	85.06		69.00	-18.9%

## Trim, 42% Trim Combo, FOB Plant, USDA

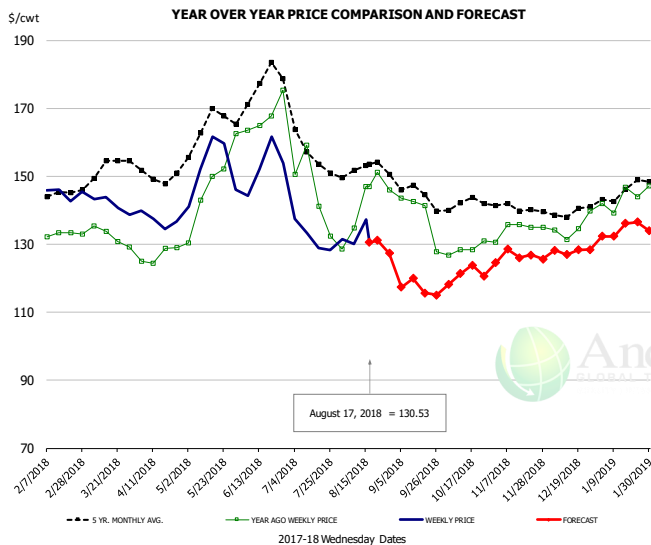


### PRICE HISTORY AND FORECAST

- DOLLARS PER CWT -

	5-YR. AVG	YR. AGO	CURRENT	FORECAST	% CH.
Feb	32.11	30.64	27.85		-9.1%
Mar	38.65	35.08	37.49		6.9%
Apr	41.05	34.21	34.69		1.4%
May	46.23	38.73	26.67		-31.1%
Jun	53.15	62.20	51.54		-17.1%
Jul	56.30	68.68	54.13		-21.2%
8-Aug		64.97	41.44		-36.2%
17-Aug		53.39	34.73		-35.0%
29-Aug		34.79		26.13	-24.9%
Aug	49.58	49.73		35.00	-29.6%
Sep	41.16	33.37		32.00	-4.1%
Oct	35.63	25.89		30.00	15.9%
Nov	28.68	27.04		25.00	-7.5%
Dec	25.36	25.34		22.00	-13.2%
Jan	27.34	26.66		28.00	5.0%

## Sparerib, Trmd Sparerib - MED, FOB Plant, USDA

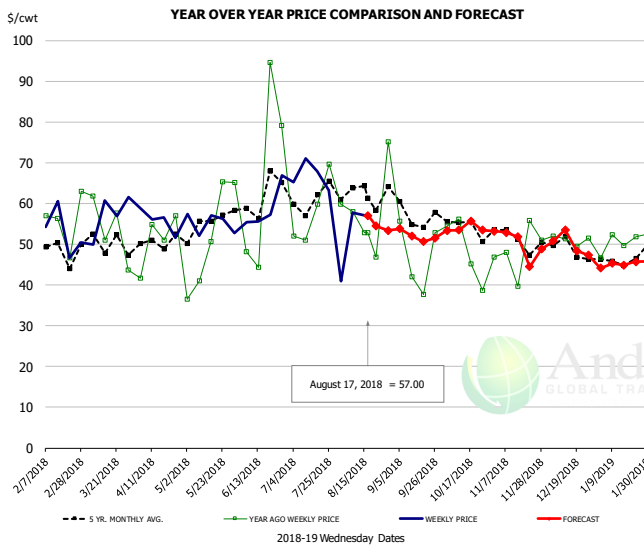


### PRICE HISTORY AND FORECAST

- DOLLARS PER CWT -

	5-YR. AVG	YR. AGO	CURRENT	FORECAST	% CH.
Feb	145.15	132.30	143.84		8.7%
Mar	150.48	131.43	141.98		8.0%
Apr	149.52	127.02	135.92		7.0%
May	162.22	145.15	149.99		3.3%
Jun	169.79	161.18	149.97		-7.0%
Jul	156.39	139.03	132.07		-5.0%
8-Aug		134.86	130.09		-3.5%
17-Aug		146.92	130.53		-11.2%
29-Aug		145.99		127.31	-12.8%
Aug	151.04	142.61		130.00	-8.8%
Sep	143.06	133.22		117.00	-12.2%
Oct	141.16	128.54		121.00	-5.9%
Nov	140.41	134.77		127.00	-5.8%
Dec	138.88	134.64		128.00	-4.9%
Jan	143.29	142.08		134.00	-5.7%

## Jowl, Skinned Combo, FOB Plant, USDA

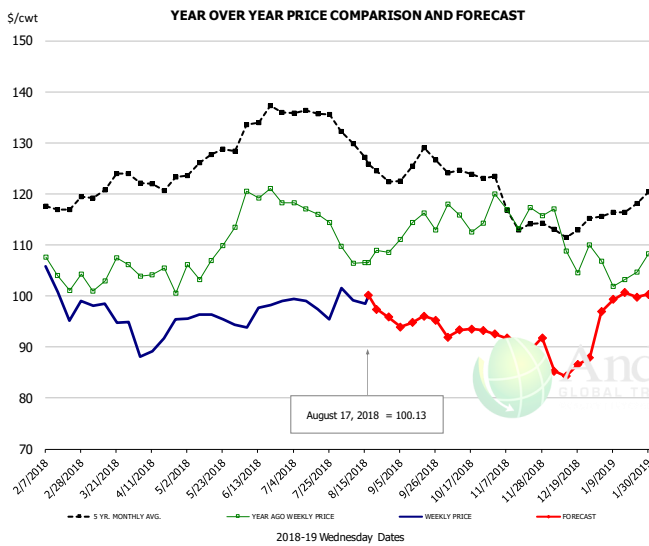


### PRICE HISTORY AND FORECAST

- DOLLARS PER CWT -

	5-YR. AVG	YR. AGO	CURRENT	FORECAST	% CH.
Feb	45.87	49.42	51.68		4.6%
Mar	46.83	50.14	55.35		10.4%
Apr	49.61	51.40	51.87		0.9%
May	51.94	46.49	52.20		12.3%
Jun	57.23	53.82	60.69		12.8%
Jul	59.95	58.90	65.69		11.5%
8-Aug		58.06	57.69		-0.6%
17-Aug		52.85	57.00		7.9%
29-Aug		75.18		53.38	-29.0%
Aug	62.76	55.67		55.00	-1.2%
Sep	54.99	48.77		52.00	6.6%
Oct	53.90	52.81		54.00	2.3%
Nov	48.05	46.87		50.00	6.7%
Dec	47.41	49.78		50.00	0.4%
Jan	43.96	49.02		45.00	-8.2%

## Loin, Boneless Sirloin, FOB Plant, USDA

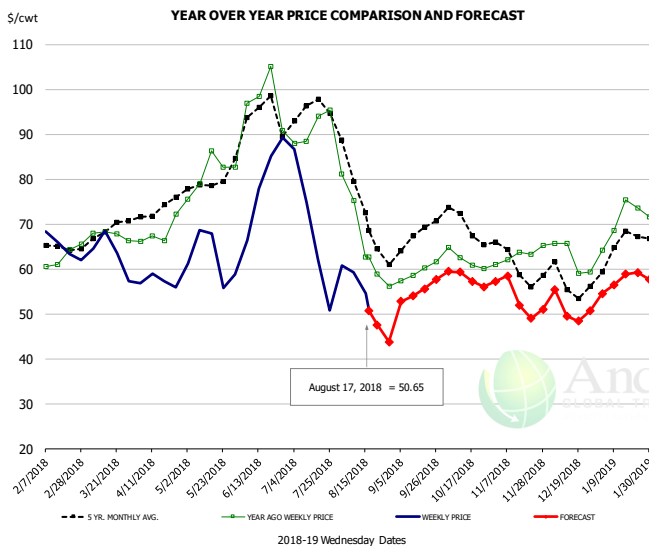


### PRICE HISTORY AND FORECAST

- DOLLARS PER CWT -

	5-YR. AVG	YR. AGO	CURRENT	FORECAST	% CH.
Feb	118.48	104.86	100.43		-4.2%
Mar	121.25	103.21	96.86		-6.2%
Apr	121.24	102.18	91.01		-10.9%
May	125.62	106.40	96.16		-9.6%
Jun	132.48	117.57	97.04		-15.5%
Jul	135.97	115.45	99.05		-14.2%
8-Aug		106.45	99.10		-6.9%
17-Aug		106.56	100.13		-6.0%
29-Aug		108.53		95.87	-11.7%
Aug	128.03	107.63		100.00	-7.1%
Sep	124.57	112.96		95.00	-15.9%
Oct	123.86	115.06		93.00	-19.2%
Nov	115.25	116.12		92.00	-20.8%
Dec	111.54	108.40		86.00	-20.7%
Jan	115.67	103.75		99.00	-4.6%

## Trim, 72% Trim Combo, FOB Plant, USDA

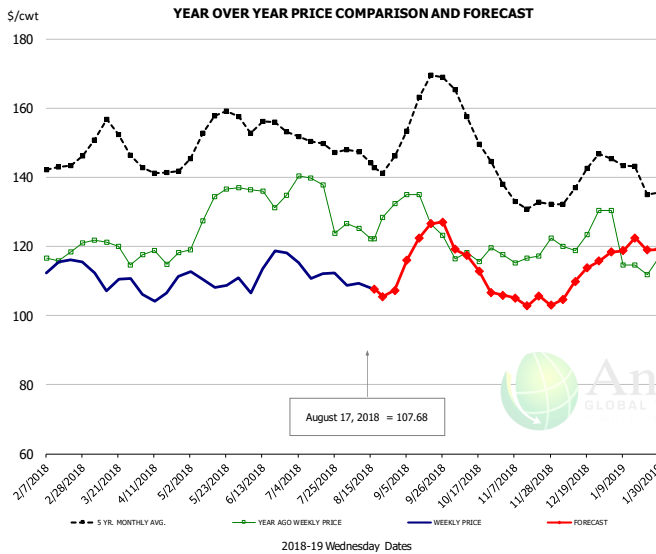


### PRICE HISTORY AND FORECAST

- DOLLARS PER CWT -

	5-YR. AVG	YR. AGO	CURRENT	FORECAST	% CH.
Feb	64.07	61.56	64.93		5.5%
Mar	67.50	67.74	63.21		-6.7%
Apr	72.75	68.32	57.61		-15.7%
May	77.24	79.86	62.58		-21.6%
Jun	91.00	93.78	77.94		-16.9%
Jul	93.72	90.99	62.90		-30.9%
8-Aug		75.20	59.20		-21.3%
17-Aug		62.60	50.65		-19.1%
29-Aug		56.13		43.79	-22.0%
Aug	72.08	66.34		53.00	-20.1%
Sep	66.01	59.76		55.00	-8.0%
Oct	69.03	62.05		58.00	-6.5%
Nov	60.76	62.29		54.00	-13.3%
Dec	57.00	63.42		51.00	-19.6%
Jan	64.34	72.24		57.00	-21.1%

## Loin, Bnls CC Strap-on, FOB Plant, USDA

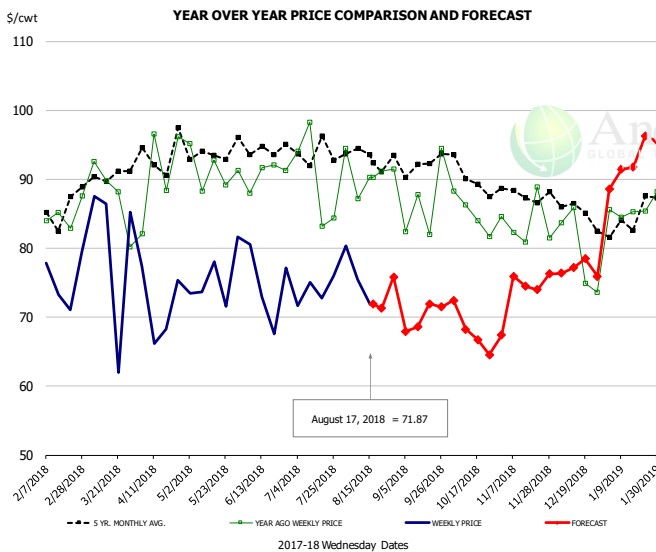


### PRICE HISTORY AND FORECAST

- DOLLARS PER CWT -

	5-YR. AVG	YR. AGO	CURRENT	FORECAST	% CH.
Feb	140.63	115.91	113.92		-1.7%
Mar	151.08	119.07	111.33		-6.5%
Apr	141.17	116.48	106.60		-8.5%
May	151.95	129.76	109.80		-15.4%
Jun	152.26	133.31	111.13		-16.6%
Jul	148.67	132.32	112.74		-14.8%
8-Aug		125.18	109.29		-12.7%
17-Aug		122.13	107.68		-11.8%
29-Aug		132.42		107.24	-19.0%
Aug	144.13	126.17		108.00	-14.4%
Sep	157.93	127.18		123.00	-3.3%
Oct	152.77	117.34		114.00	-2.8%
Nov	133.02	116.77		105.00	-10.1%
Dec	137.49	122.82		111.00	-9.6%
Jan	139.68	116.43		120.00	3.1%

## Brisket Bones, Full, 30#, USDA, FRZ



### PRICE HISTORY AND FORECAST

- DOLLARS PER CWT -

	5-YR. AVG	YR. AGO	CURRENT	FORECAST	% CH.
Feb		84.90	75.46		-11.1%
Mar		87.66	80.32		-8.4%
Apr		90.82	71.81		-20.9%
May		91.34	75.68		-17.1%
Jun		90.74	74.57		-17.8%
Jul		90.00	73.85		-17.9%
8-Aug		87.20	75.43		-13.5%
17-Aug		90.32	71.87		-20.4%
29-Aug		91.50		75.83	-17.1%
Aug		90.92		74.00	-18.6%
Sep	92.15	86.65		70.00	-19.2%
Oct	90.20	85.06		68.00	-20.1%
Nov	87.61	83.65		75.00	-10.3%
Dec	85.79	79.51		77.00	-3.2%
Jan	83.89	85.80		92.00	7.2%

# Beef Market - Supply Situation & Outlook

## Weekly Beef Production Statistics

Source: USDA

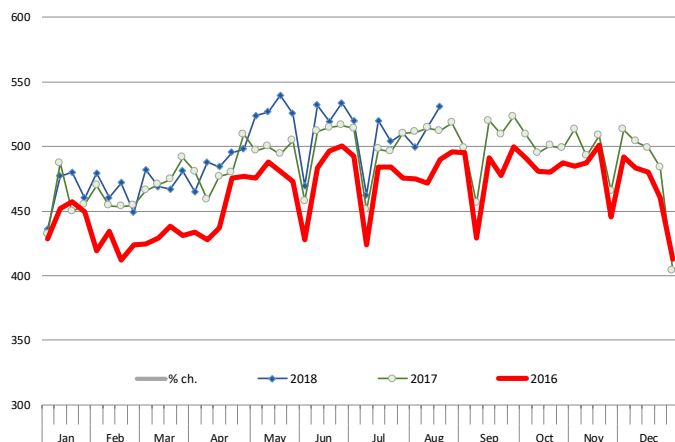
		Slaughter (1000 hd)	% CH.	Dressed Wt LBS	% CH.	Production (Million lbs)	% CH.
Year Ago	19-Aug-17	635.0		820.0		519.8	
This Week	18-Aug-18	660.0	3.9%	813.0	-0.9%	535.4	3.0%
Last Week	11-Aug-18	645.0		809.0		521.0	
This Week	18-Aug-18	660.0	2.3%	813.0	0.5%	535.4	2.8%
YTD Last Year	19-Aug-17	19,912		808.0		16,089	
YTD This Year	18-Aug-18	20,487	2.9%	810.6	0.3%	16,607	3.2%

### Quarterly History + Forecasts

Q1 2016	7,184		826.5		5,938	
Q2 2016	7,631		810.9		6,187	
Q3 2016	7,845		824.9		6,472	
Q4 2016	7,919		836.6		6,625	
<b>Annual</b>	<b>30,578</b>	<b>Y/Y % CH.</b>	<b>824.7</b>	<b>Y/Y % CH.</b>	<b>25,221</b>	<b>Y/Y % CH.</b>
Q1 2017	7,714	7.4%	817.0	-1.1%	6,303	6.2%
Q2 2017	8,076	5.8%	793.3	-2.2%	6,407	3.5%
Q3 2017	8,254	5.2%	816.0	-1.1%	6,736	4.1%
Q4 2017	8,145	2.9%	827.8	-1.1%	6,742	1.8%
<b>Annual</b>	<b>32,189</b>	<b>5.3%</b>	<b>813.5</b>	<b>-1.4%</b>	<b>26,187</b>	<b>3.8%</b>
Q1 2018	7,877	2.1%	820.8	0.5%	6,465	2.6%
Q2 2018	8,424	4.3%	798.2	0.6%	6,724	4.9%
Q3 2018	8,585	4.0%	823.0	0.9%	7,065	4.9%
Q4 2018	8,397	3.1%	835.0	0.9%	7,011	4.0%
<b>Annual</b>	<b>33,282</b>	<b>3.4%</b>	<b>819.2</b>	<b>0.7%</b>	<b>27,265</b>	<b>4.1%</b>

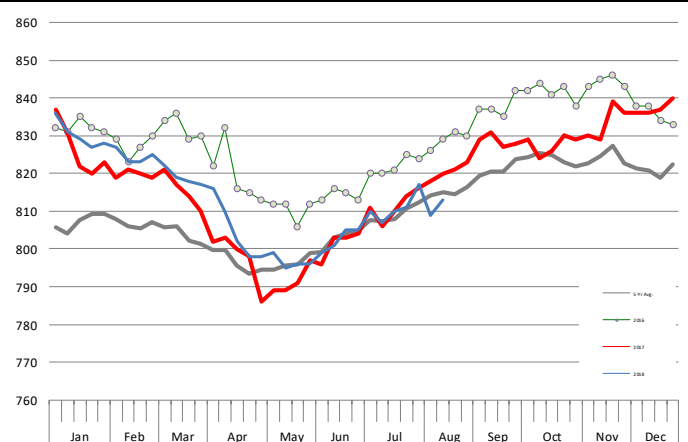
### WEEKLY STEER AND HEIFER SLAUGHTER. '000 HEAD

Source: USDA



### Weekly Average FI Cattle Carcass Weights (Includes Fed & Non Fed Cattle)

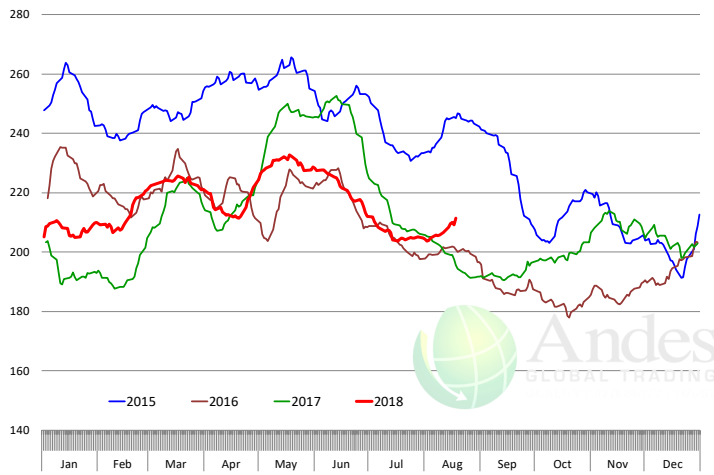
Average Dressed Weight Per Carcass. Data Source: USDA AMS



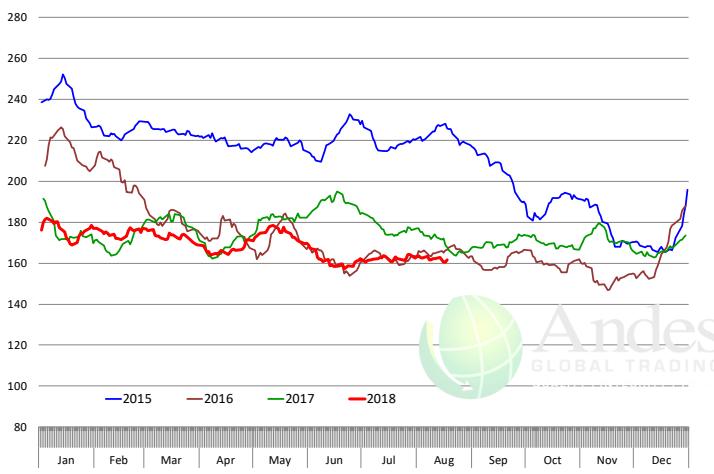


# Beef Primal Values

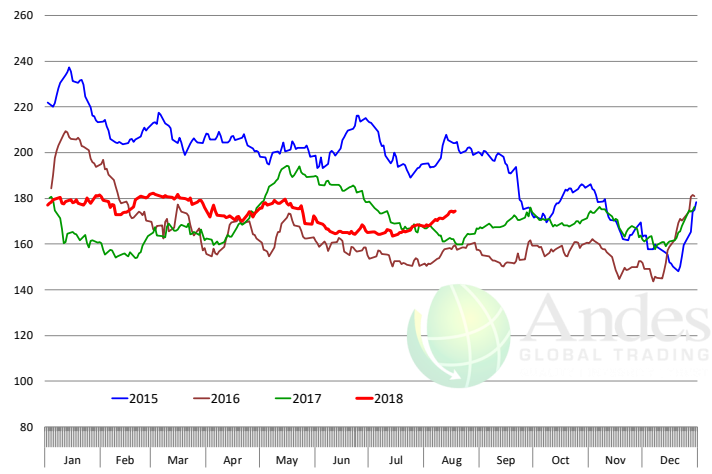
Beef Choice Cutout Value, USDA, Daily, \$/cwt



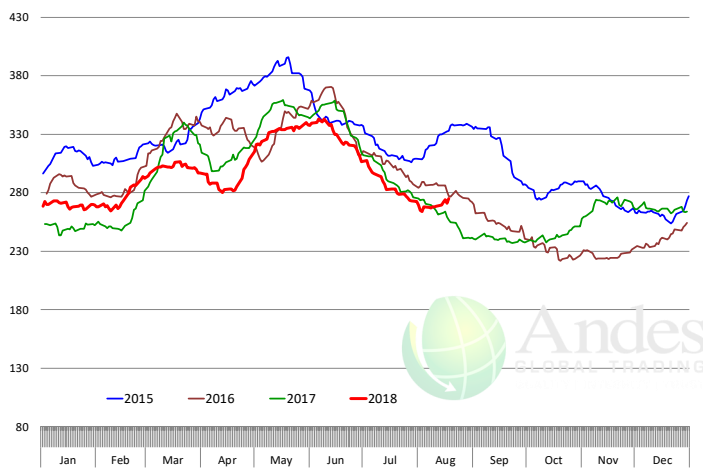
Primal Round Cutout Value, USDA, Daily, \$/cwt



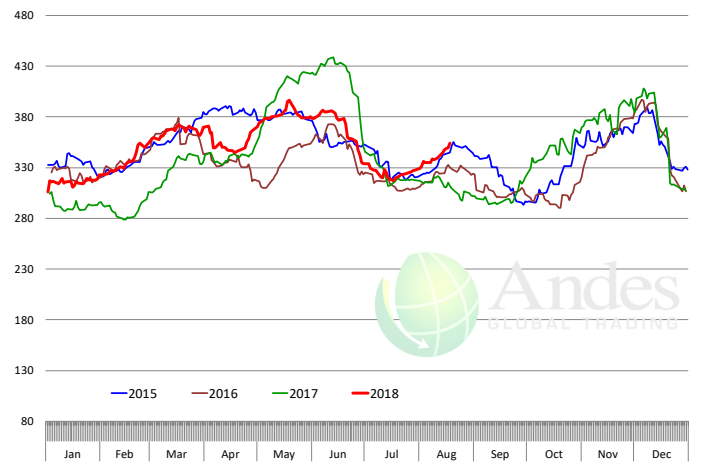
Primal Chuck Cutout Value, USDA, Daily, \$/cwt



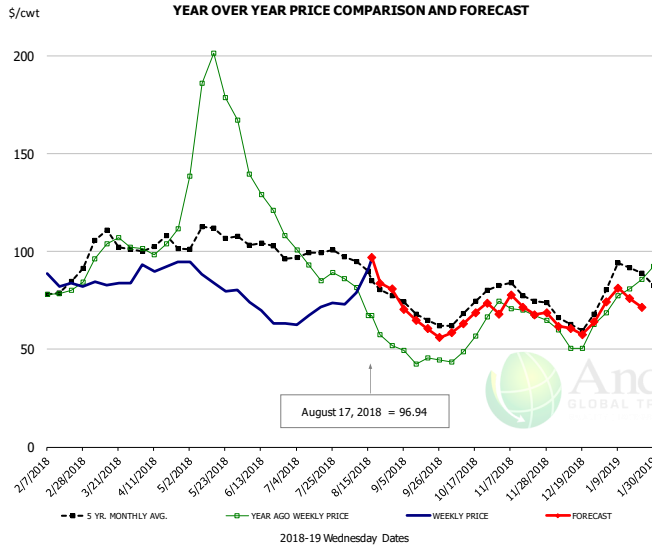
Primal Loin Cutout Value, USDA, Daily, \$/cwt



Primal Rib Cutout Value, USDA, Daily, \$/cwt



## 50CL BEEF TRIM, FRESH, NATIONAL, USDA

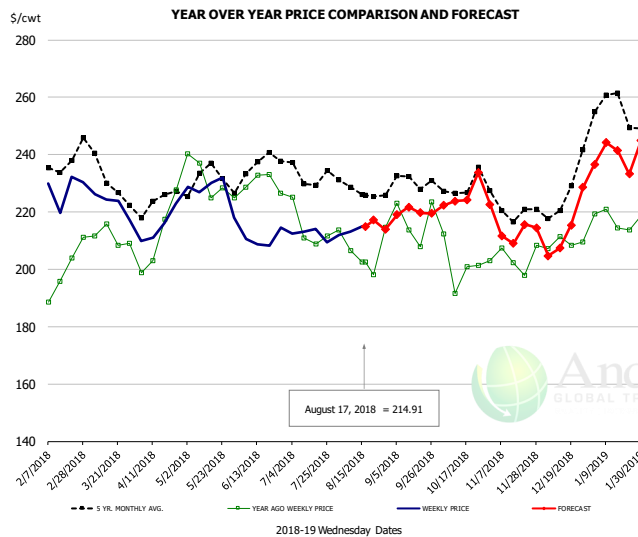


### PRICE HISTORY AND FORECAST

- DOLLARS PER CWT -

	5-YR. AVG	YR. AGO	CURRENT	FORECAST	% CH.
Feb	78.59	79.34	83.66		5.4%
Mar	101.58	98.83	84.23		-14.8%
Apr	102.01	105.46	93.37		-11.5%
May	108.18	176.71	85.49		-51.6%
Jun	103.04	131.93	67.99		-48.5%
Jul	98.08	92.86	69.16		-25.5%
8-Aug		81.58	78.87		-3.3%
17-Aug		67.24	96.94		44.2%
29-Aug		52.06		80.81	55.2%
Aug	88.47	68.58		87.00	26.9%
Sep	68.39	45.07		63.00	39.8%
Oct	70.96	56.49		66.00	16.8%
Nov	78.61	69.13		72.00	4.2%
Dec	64.76	54.74		61.00	11.4%
Jan	86.64	79.25		76.00	-4.1%

## SELECT, 114A, 3 SHOULDER CLOD, TRIMMED, 1/4" MAX, USDA

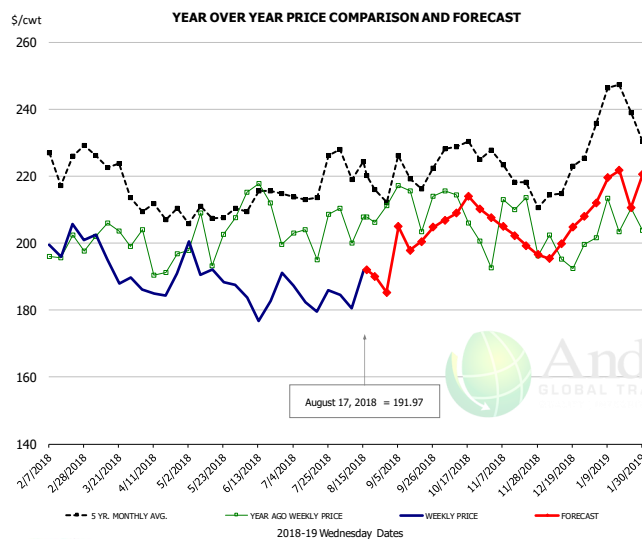


### PRICE HISTORY AND FORECAST

- DOLLARS PER CWT -

	5-YR. AVG	YR. AGO	CURRENT	FORECAST	% CH.
Feb	237.50	200.26	223.62		11.7%
Mar	231.12	208.65	220.64		5.7%
Apr	221.00	204.47	215.44		5.4%
May	229.08	228.70	228.53		-0.1%
Jun	230.94	228.26	207.81		-9.0%
Jul	230.65	210.01	210.05		0.0%
8-Aug		206.49	213.09		3.2%
17-Aug		202.56	214.91		6.1%
29-Aug		214.64		213.91	-0.3%
Aug	227.46	205.70		216.00	5.0%
Sep	228.17	214.79		220.00	2.4%
Oct	225.48	201.06		226.00	12.4%
Nov	219.76	203.08		214.00	5.4%
Dec	221.20	207.09		214.00	3.3%
Jan	253.20	217.87		239.00	9.7%

## SELECT, 170 GOOSENECK ROUND, 18-33, USDA

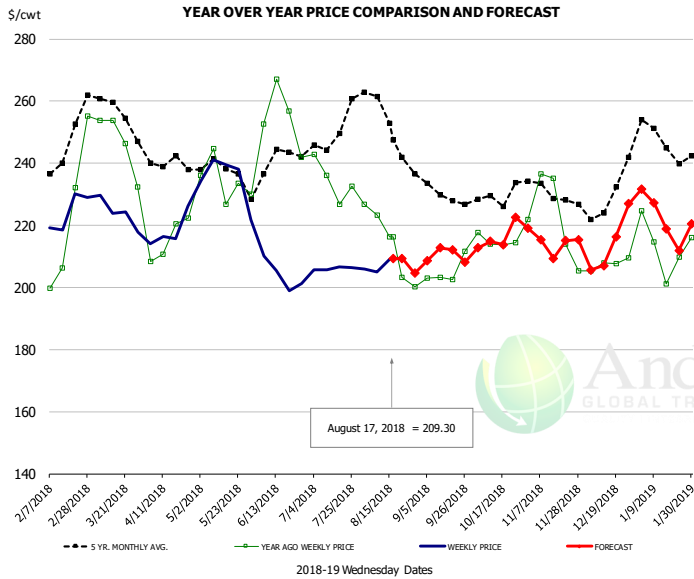


### PRICE HISTORY AND FORECAST

- DOLLARS PER CWT -

	5-YR. AVG	YR. AGO	CURRENT	FORECAST	% CH.
Feb	221.47	194.76	199.05		2.2%
Mar	218.70	200.86	190.19		-5.3%
Apr	206.61	192.05	186.92		-2.7%
May	205.76	200.80	191.75		-4.5%
Jun	207.35	206.07	182.70		-11.3%
Jul	211.34	195.62	184.23		-5.8%
8-Aug		200.05	180.60		-9.7%
17-Aug		207.86	191.97		-7.6%
29-Aug		211.13		185.23	-12.3%
Aug	217.67	198.93		191.00	-4.0%
Sep	214.52	204.72		202.00	-1.3%
Oct	224.19	204.96		210.00	2.5%
Nov	216.22	197.00		203.00	3.0%
Dec	213.43	196.95		202.00	2.6%
Jan	236.21	204.92		216.00	5.4%

## CHOICE, 168, 3 TOP INSIDE ROUND, 1/4" MAX, USDA

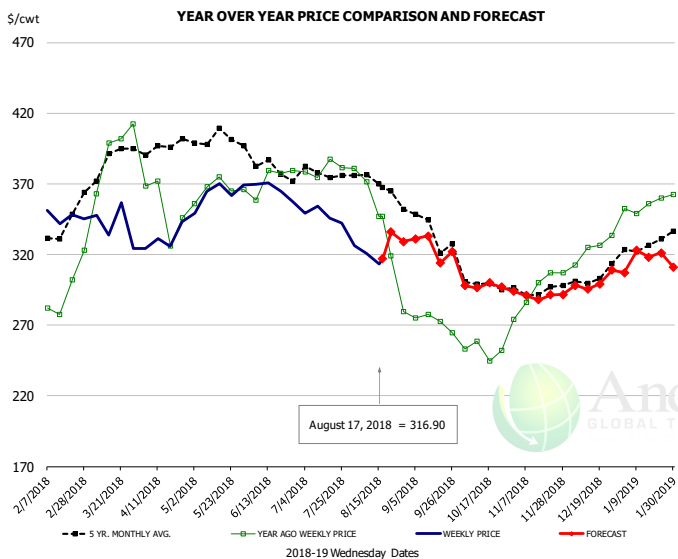


### PRICE HISTORY AND FORECAST

- DOLLARS PER CWT -

	5-YR. AVG	YR. AGO	CURRENT	FORECAST	% CH.
Feb	242.05	216.10	221.96		2.7%
Mar	255.24	242.49	223.30		-7.9%
Apr	238.70	214.51	217.21		1.3%
May	236.66	231.79	232.51		0.3%
Jun	236.13	250.42	205.83		-17.8%
Jul	245.42	232.10	204.79		-11.8%
8-Aug		223.29	204.99		-8.2%
17-Aug		216.25	209.30		-3.2%
29-Aug		200.24		204.54	2.1%
Aug	250.20	210.80		213.00	1.0%
Sep	229.40	204.34		212.00	3.7%
Oct	228.65	215.92		216.00	0.0%
Nov	227.96	217.04		215.00	-0.9%
Dec	226.84	206.45		214.00	3.7%
Jan	245.29	212.85		225.00	5.7%

## CHOICE, 184, 3 TOP BUTT, BONELESS, USDA

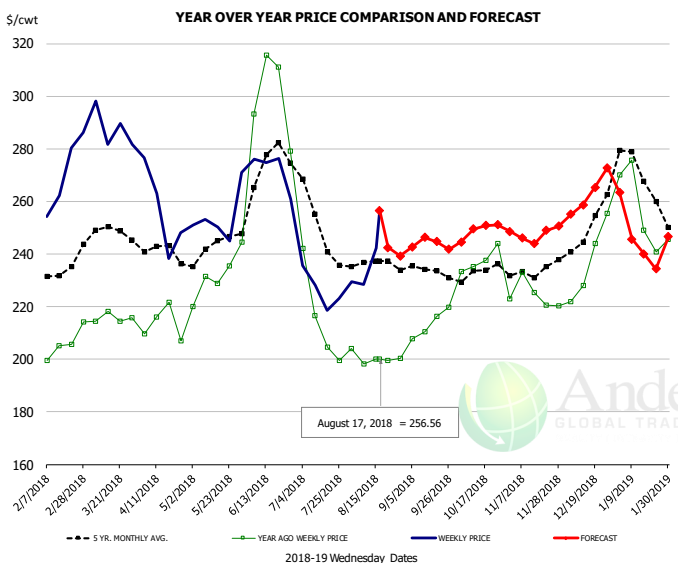


### PRICE HISTORY AND FORECAST

- DOLLARS PER CWT -

	5-YR. AVG	YR. AGO	CURRENT	FORECAST	% CH.
Feb	329.27	291.00	345.29		18.7%
Mar	381.86	380.54	339.84		-10.7%
Apr	391.19	358.69	332.58		-7.3%
May	399.55	365.43	363.43		-0.5%
Jun	379.60	367.27	364.50		-0.8%
Jul	375.44	378.05	346.97		-8.2%
8-Aug		371.19	320.54		-13.6%
17-Aug		346.86	316.90		-8.6%
29-Aug		279.76		329.00	17.6%
Aug	363.83	333.81		332.00	-0.5%
Sep	336.94	271.78		328.00	20.7%
Oct	298.54	254.23		297.00	16.8%
Nov	293.70	294.73		291.00	-1.3%
Dec	297.56	320.99		295.00	-8.1%
Jan	322.31	349.59		307.00	-12.2%

## CHOICE, 120, 1 BRISKET, DECKLE-OFF, BONELESS, USDA

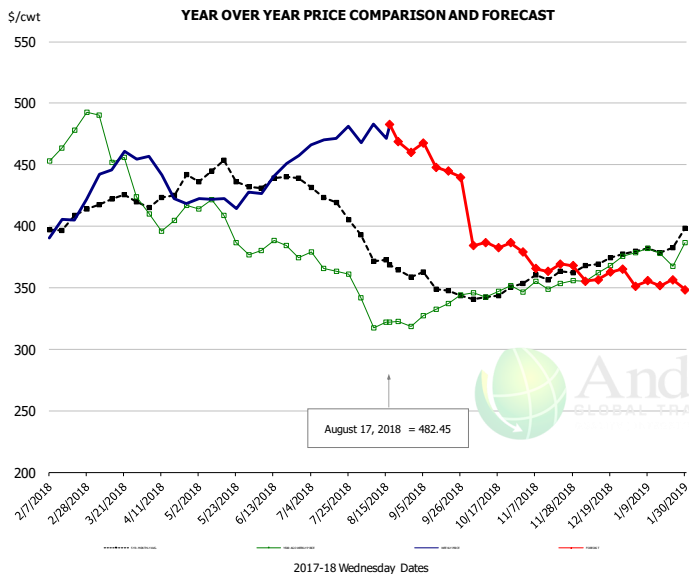


### PRICE HISTORY AND FORECAST

- DOLLARS PER CWT -

	5-YR. AVG	YR. AGO	CURRENT	FORECAST	% CH.
Feb	232.37	204.57	266.48		30.3%
Mar	243.58	211.62	285.22		34.8%
Apr	238.91	210.28	252.48		20.1%
May	241.61	232.08	252.85		8.9%
Jun	267.47	290.22	272.48		-6.1%
Jul	244.87	210.89	228.19		8.2%
8-Aug		198.32	228.41		15.2%
17-Aug		199.94	256.56		28.3%
29-Aug		200.27		239.27	19.5%
Aug	234.93	199.86		240.00	20.1%
Sep	233.04	210.80		245.00	16.2%
Oct	232.22	235.53		249.00	5.7%
Nov	231.25	223.71		247.00	10.4%
Dec	246.17	234.17		263.00	12.3%
Jan	264.01	251.79		262.00	4.1%

## Inside Skirt, USDA



## PRICE HISTORY AND FORECAST

- DOLLARS PER CWT -

	5-YR. AVG	YR. AGO	CURRENT	FORECAST	% CH.
Feb	395.76	459.40	402.54		-12.4%
Mar	417.87	461.72	452.26		-2.0%
Apr	422.41	408.95	426.68		4.3%
May	434.48	395.52	413.51		4.5%
Jun	432.50	378.23	438.10		15.8%
Jul	418.45	367.65	470.53		28.0%
8-Aug		317.39	483.30		52.3%
17-Aug		322.16	482.45		49.8%
29-Aug		318.70		460.18	44.4%
Aug	372.47	325.53		475.00	45.9%
Sep	349.59	333.12		450.00	35.1%
Oct	344.45	347.76		385.00	10.7%
Nov	356.44	352.71		365.00	3.5%
Dec	368.77	365.62		360.00	-1.5%
Jan	379.78	376.90		354.00	-6.1%



## Broiler Market - Supply Situation & Outlook

### Weekly Broiler Production Statistics

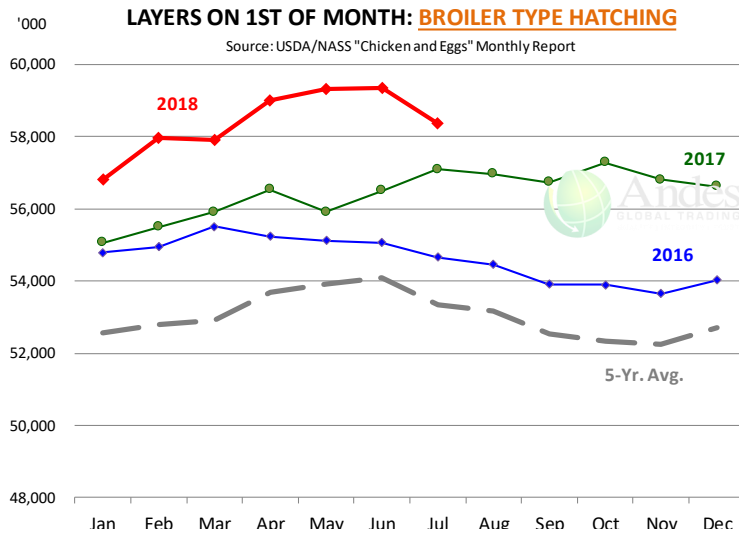
Source: USDA

		Slaughter (million hd)	% CH.	Dressed Wt LBS	% CH.	Production RTC (Million lbs)	% CH.
Year Ago	12-Aug-17	163.5		4.65		760.6	
Last Week	11-Aug-18	168.1	2.8%	4.67	0.5%	785.6	3.3%
Prev. Week	4-Aug-18	168.8		4.71		795.5	
Last Week	11-Aug-18	168.1	-0.4%	4.67	-0.8%	785.6	-1.2%
YTD Last Year	12-Aug-17	5,156		4.65		23,987	
YTD This Year	11-Aug-18	5,140	-0.3%	4.68	0.7%	24,070	0.3%

#### Quarterly History + Forecasts

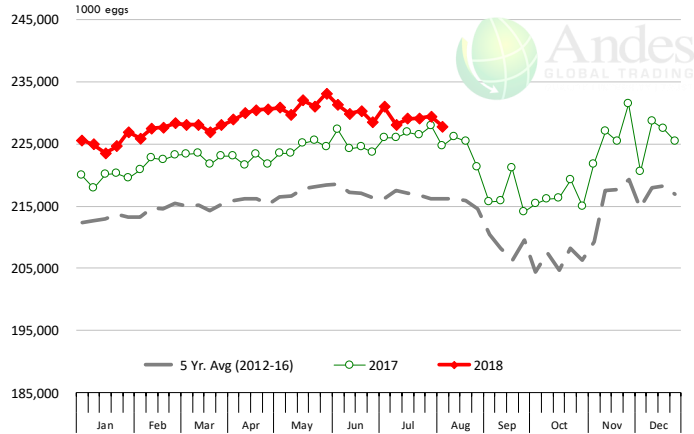
Q1 2016	2,160		4.65		10,039	
Q2 2016	2,207		4.65		10,253	
Q3 2016	2,248		4.60		10,338	
Q4 2016	2,154		4.67		10,065	
<b>Annual</b>	<b>8,768</b>	<b>Y/Y % CH.</b>	<b>4.64</b>	<b>Y/Y % CH.</b>	<b>40,696</b>	<b>Y/Y % CH.</b>
Q1 2017	2,201	1.9%	4.65	0.0%	10,233	1.9%
Q2 2017	2,236	1.3%	4.65	0.2%	10,407	1.5%
Q3 2017	2,264	0.7%	4.66	1.3%	10,551	2.1%
Q4 2017	2,216	2.9%	4.73	1.1%	10,472	4.0%
<b>Annual</b>	<b>8,916</b>	<b>1.7%</b>	<b>4.67</b>	<b>0.7%</b>	<b>41,662</b>	<b>2.4%</b>
Q1 2018	2,209	0.4%	4.70	1.1%	10,385	1.5%
Q2 2018	2,269	1.5%	4.71	1.2%	10,680	2.6%
Q3 2018	2,298	1.5%	4.70	0.8%	10,800	2.4%
Q4 2018	2,260	2.0%	4.75	0.5%	10,736	2.5%
<b>Annual</b>	<b>9,035</b>	<b>1.3%</b>	<b>4.71</b>	<b>0.9%</b>	<b>42,601</b>	<b>2.3%</b>





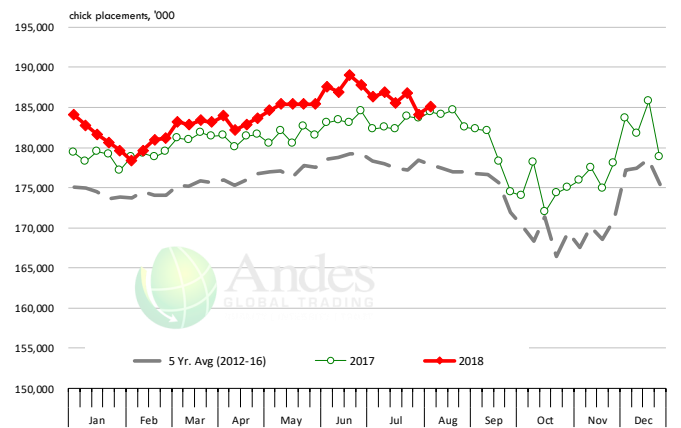
### US WEEKLY BROILER EGG SETS

Source: USDA Broiler Hatchery Report

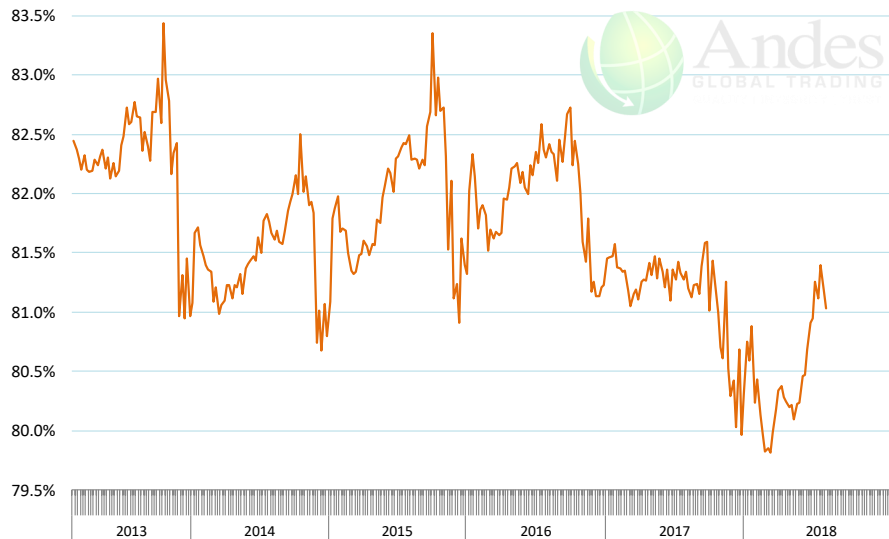


### US WEEKLY BROILER CHICK PLACEMENT

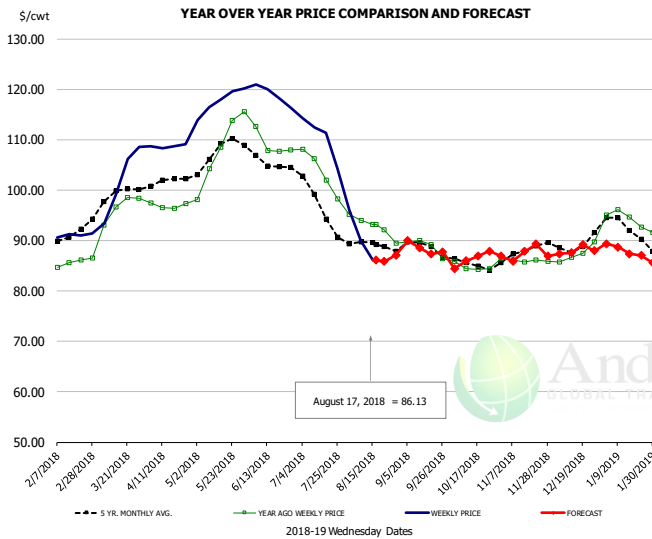
Source: USDA Broiler Hatchery Report



### RATIO OF CHICK PLACEMENTS VS. EGG SETS (21 DAY LAG)



## BROILER, NATIONAL WHOLE BIRD PRICE, USDA

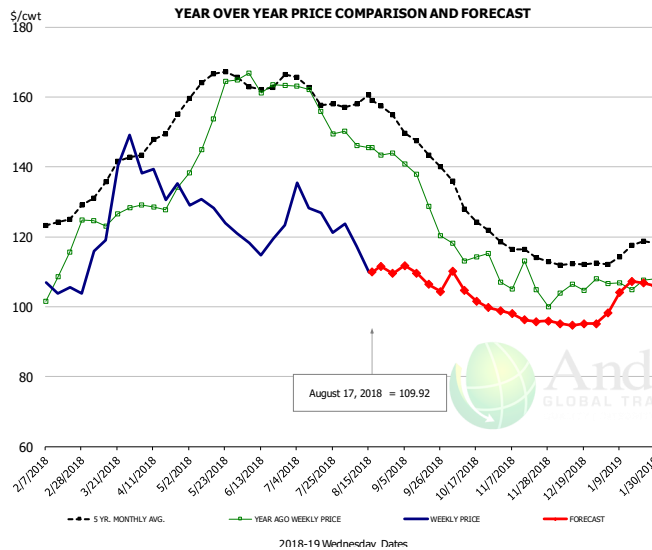


### PRICE HISTORY AND FORECAST

- DOLLARS PER CWT -

	5-YR. AVG	YR. AGO	CURRENT	FORECAST	% CH.
Feb	90.60	85.01	91.07		7.1%
Mar	98.32	94.65	101.78		7.5%
Apr	101.48	96.90	108.72		12.2%
May	107.33	108.05	117.62		8.9%
Jun	105.79	109.03	118.89		9.0%
Jul	97.86	103.65	110.64		6.8%
8-Aug		94.05	89.88		-4.4%
17-Aug		93.14	86.13		-7.5%
29-Aug		89.44		87.13	-2.6%
Aug	89.17	92.80		86.00	-7.3%
Sep	88.30	88.83		89.00	0.2%
Oct	85.46	84.73		86.00	1.5%
Nov	87.66	86.06		87.00	1.1%
Dec	89.25	87.40		88.00	0.7%
Jan	92.67	94.02		89.00	-5.3%

## N.E. BROILER BREAST BONELESS-SKINLESS, USDA

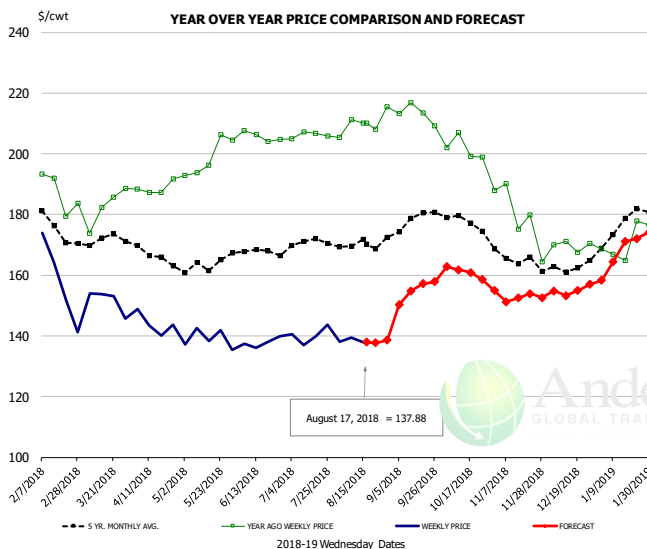


### PRICE HISTORY AND FORECAST

- DOLLARS PER CWT -

	5-YR. AVG	YR. AGO	CURRENT	FORECAST	% CH.
Feb	124.10	107.51	104.99		-2.3%
Mar	134.75	125.46	131.08		4.5%
Apr	146.82	129.87	135.81		4.6%
May	164.34	153.28	126.53		-17.4%
Jun	164.02	163.75	118.94		-27.4%
Jul	161.65	157.63	127.90		-18.9%
8-Aug		146.05	117.29		-19.7%
17-Aug		145.47	109.92		-24.4%
29-Aug		143.86		109.45	-23.9%
Aug	158.31	145.75		110.00	-24.5%
Sep	146.16	131.91		108.00	-18.1%
Oct	128.99	115.16		104.00	-9.7%
Nov	115.89	106.01		97.00	-8.5%
Dec	112.61	105.72		95.00	-10.1%
Jan	115.74	106.78		101.00	-5.4%

## N.E. BROILER WINGS, USDA, WT. AVG.

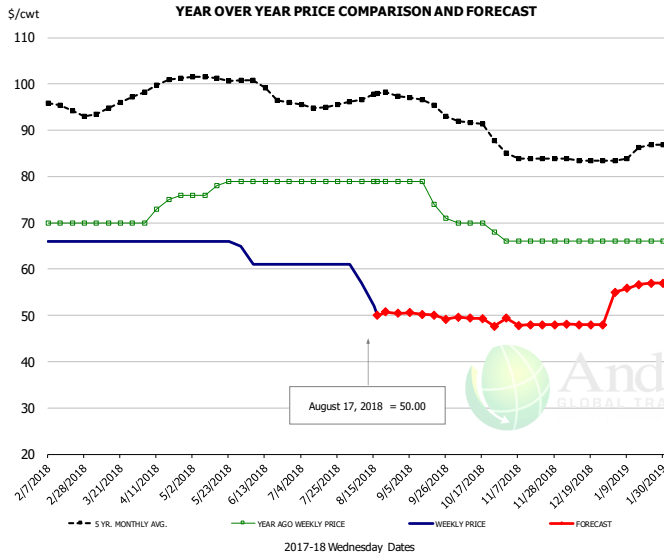


### PRICE HISTORY AND FORECAST

- DOLLARS PER CWT -

	5-YR. AVG	YR. AGO	CURRENT	FORECAST	% CH.
Feb	179.03	190.28	157.83		-17.1%
Mar	171.89	182.84	151.61		-17.1%
Apr	167.69	188.71	143.99		-23.7%
May	163.19	198.74	139.08		-30.2%
Jun	167.98	205.67	137.79		-33.0%
Jul	169.97	206.21	140.22		-32.0%
8-Aug		211.12	139.52		-33.9%
17-Aug		210.16	137.88		-34.4%
29-Aug		215.50		138.59	-35.7%
Aug	170.44	210.05		138.00	-34.3%
Sep	177.35	213.14		155.00	-27.3%
Oct	177.83	201.73		161.00	-20.2%
Nov	165.12	179.46		153.00	-14.7%
Dec	162.68	169.80		155.00	-8.7%
Jan	175.72	170.93		166.00	-2.9%

## NE BONELESS BROILER WHITE TRIM MEAT, UNDER 15%, FRESH

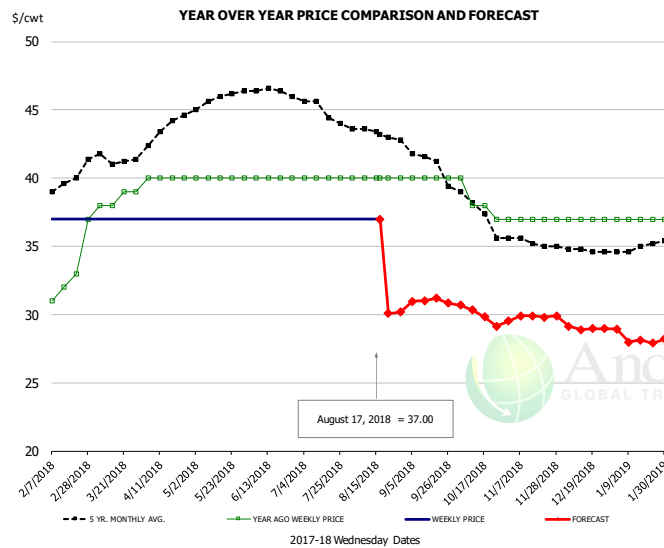


### PRICE HISTORY AND FORECAST

- DOLLARS PER CWT -

	5-YR. AVG	YR. AGO	CURRENT	FORECAST	% CH.
Feb	95.55	70.00	66.00		-5.7%
Mar	94.30	70.00	66.00		-5.7%
Apr	99.52	73.50	66.00		-10.2%
May	101.18	77.60	65.80		-15.2%
Jun	99.30	79.00	61.00		-22.8%
Jul	95.47	79.00	61.00		-22.8%
8-Aug		79.00	57.00		-27.8%
17-Aug		79.00	50.00		-36.7%
29-Aug		79.00		50.41	-36.2%
Aug	97.40	79.00		50.00	-36.7%
Sep	95.97	75.75		50.00	-34.0%
Oct	90.92	69.50		49.00	-29.5%
Nov	84.10	66.00		48.00	-27.3%
Dec	83.56	66.00		48.00	-27.3%
Jan	85.16	66.00		56.00	-15.2%

## UB CHICKEN - NE DRUMSTICKS, (BULK)

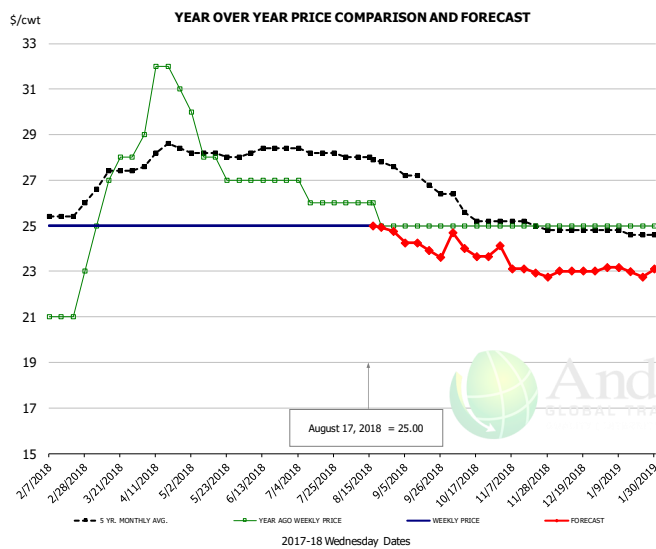


### PRICE HISTORY AND FORECAST

- DOLLARS PER CWT -

	5-YR. AVG	YR. AGO	CURRENT	FORECAST	% CH.
Feb	39.20	31.75	37.00		16.5%
Mar	41.43	38.20	37.00		-3.1%
Apr	43.28	40.00	37.00		-7.5%
May	45.70	40.00	37.00		-7.5%
Jun	46.45	40.00	37.00		-7.5%
Jul	45.06	40.00	37.00		-7.5%
8-Aug		40.00	37.00		-7.5%
17-Aug		40.00	37.00		-7.5%
29-Aug		40.00		30.20	-24.5%
Aug	43.37	40.00		30.00	-25.0%
Sep	41.70	40.00		31.00	-22.5%
Oct	37.79	38.25		30.00	-21.6%
Nov	35.35	37.00		30.00	-18.9%
Dec	34.76	37.00		29.00	-21.6%
Jan	34.83	37.00		29.00	-21.6%

## MECHANICALLY SEPARATED CHICKEN-FRESH-15-20% FAT W/SKN



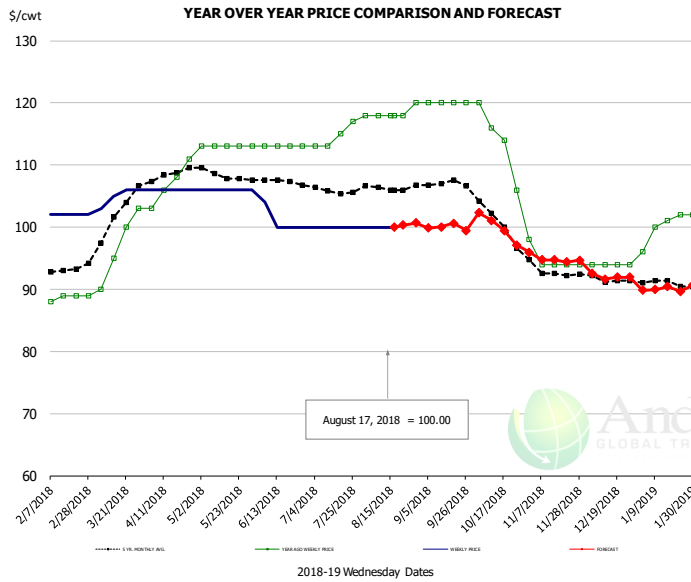
### PRICE HISTORY AND FORECAST

- DOLLARS PER CWT -

	5-YR. AVG	YR. AGO	CURRENT	FORECAST	% CH.
Feb	25.40	21.00	25.00		19.0%
Mar	26.91	26.20	25.00		-4.6%
Apr	28.10	31.00	25.00		-19.4%
May	28.10	28.00	25.00		-10.7%
Jun	28.25	27.00	25.00		-7.4%
Jul	28.25	26.25	25.00		-4.8%
8-Aug		26.00	25.00		-3.8%
17-Aug		26.00	25.00		-3.8%
29-Aug		25.00		24.76	-1.0%
Aug	27.92	25.60		25.00	-2.3%
Sep	27.17	25.00		24.00	-4.0%
Oct	25.73	25.00		24.00	-4.0%
Nov	25.15	25.00		23.00	-8.0%
Dec	24.80	25.00		23.00	-8.0%
Jan	24.70	25.00		23.00	-8.0%



## UB NE Whole Leg Meat 4/10's

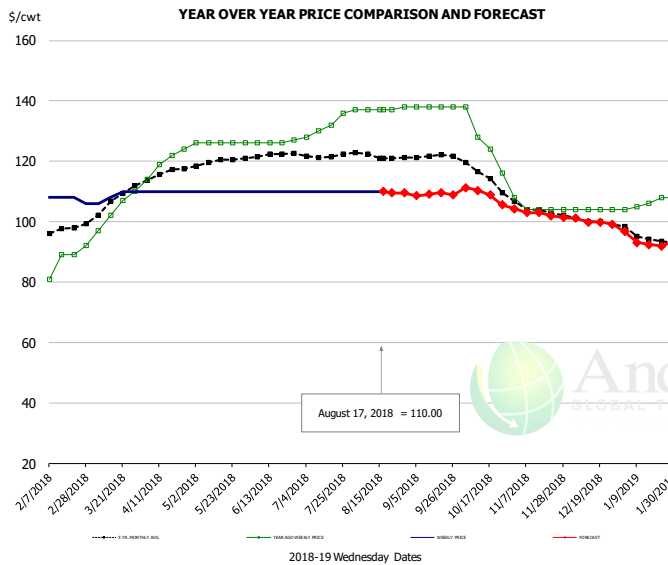


### PRICE HISTORY AND FORECAST

- DOLLARS PER CWT -

	5-YR. AVG	YR. AGO	CURRENT	FORECAST	% CH.
Feb	93.25	88.50	102.00		15.3%
Mar	100.11	95.40	105.00		10.1%
Apr	108.32	107.00	106.00		-0.9%
May	108.45	113.00	106.00		-6.2%
Jun	107.66	113.00	101.00		-10.6%
Jul	106.13	114.50	100.00		-12.7%
8-Aug		118.00	100.00		-15.3%
17-Aug		118.00	100.00		-15.3%
29-Aug			120.00	100.65	-16.1%
Aug	106.46	118.40		100.00	-15.5%
Sep	107.09	120.00		100.00	-16.7%
Oct	101.46	114.00		100.00	-12.3%
Nov	92.91	94.80		95.00	0.2%
Dec	91.46	94.00		92.00	-2.1%
Jan	91.02	100.20		90.00	-10.2%

## UB NE Boneless/Skinless Thigh Meat, Special Trim

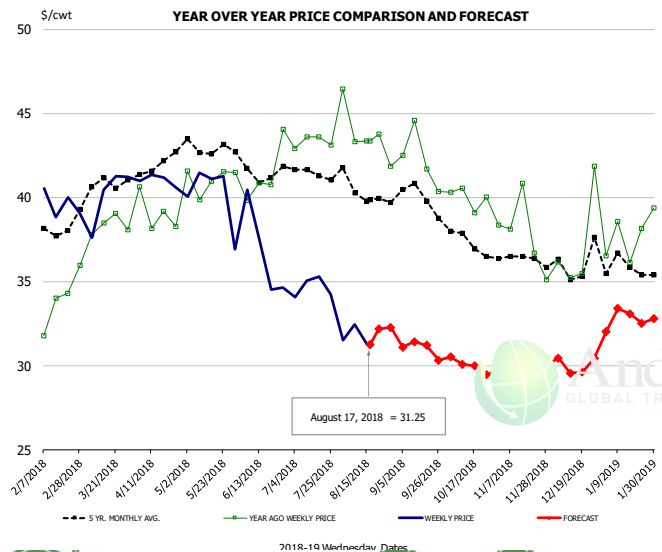


### PRICE HISTORY AND FORECAST

- DOLLARS PER CWT -

	5-YR. AVG	YR. AGO	CURRENT	FORECAST	% CH.
Feb	97.10	84.75	107.50		26.8%
Mar	105.43	101.60	108.50		6.8%
Apr	115.64	119.75	110.00		-8.1%
May	119.45	126.00	110.00		-12.7%
Jun	121.95	126.25	110.00		-12.9%
Jul	122.05	131.50	110.00		-16.3%
8-Aug		137.00	110.00		-19.7%
17-Aug		137.00	110.00		-19.7%
29-Aug		138.00		109.45	-20.7%
Aug	121.91	137.20		110.00	-19.8%
Sep	121.64	138.00		109.00	-21.0%
Oct	115.64	126.50		109.00	-13.8%
Nov	103.98	104.80		103.00	-1.7%
Dec	100.14	104.00		100.00	-3.8%
Jan	95.26	106.20		95.00	-10.5%

## N.E. BROILER LEG QUARTERS, USDA



### PRICE HISTORY AND FORECAST

- DOLLARS PER CWT -

	5-YR. AVG	YR. AGO	CURRENT	FORECAST	% CH.
Feb	37.85	33.14	39.60		19.5%
Mar	40.50	37.87	40.13		6.0%
Apr	41.86	39.06	41.03		5.0%
May	43.03	41.08	40.16		-2.2%
Jun	41.66	41.38	36.81		-11.0%
Jul	41.50	43.31	34.65		-20.0%
8-Aug		43.33	32.42		-25.2%
17-Aug		43.36	31.25		-27.9%
29-Aug		41.84		32.27	-22.9%
Aug	40.36	43.75		32.00	-26.9%
Sep	40.10	42.28		31.00	-26.7%
Oct	37.53	39.99		30.00	-25.0%
Nov	36.26	37.83		30.00	-20.7%
Dec	36.06	37.17		30.00	-19.3%
Jan	35.92	37.74		32.00	-15.2%

## Turkey Market - Supply Situation & Outlook

### Weekly Turkey Production Statistics

Source: USDA

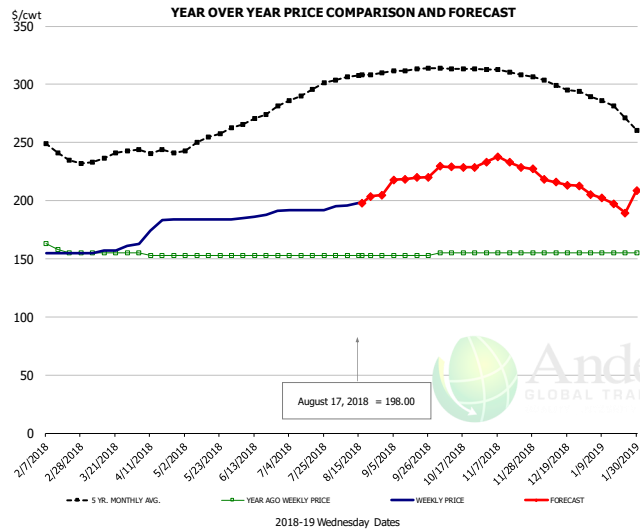
		Slaughter (million hd)	% CH.	Dressed Wt LBS	% CH.	Production RTC (Million lbs)	% CH.
Year Ago	12-Aug-17	4.059		24.47		99.3	
Last Week	11-Aug-18	4.267	5.1%	24.08	-1.6%	102.8	3.5%
Prev. Week	4-Aug-18	4.270		25.14		107.3	
Last Week	11-Aug-18	4.267	-0.1%	24.08	-4.2%	102.8	-4.3%
YTD Last Year	12-Aug-17	131.8		25.40		3,347	
YTD This Year	11-Aug-18	131.6	-0.1%	25.30	-0.4%	3,330	-0.5%

#### Quarterly History + Forecasts

Q1 2016	57.1		25.12		1,435	
Q2 2016	61.4		24.74		1,520	
Q3 2016	62.4		24.28		1,515	
Q4 2016	62.3		24.26		1,511	
<b>Annual</b>	<b>243.3</b>	<b>Y/Y % CH.</b>	<b>24.60</b>	<b>Y/Y % CH.</b>	<b>5,981</b>	<b>Y/Y % CH.</b>
Q1 2017	58.7	2.8%	25.33	0.9%	1,488	3.7%
Q2 2017	59.6	-3.1%	24.87	0.5%	1,482	-2.5%
Q3 2017	60.4	-3.2%	24.49	0.9%	1,479	-2.4%
Q4 2017	63.0	1.1%	24.33	0.3%	1,533	1.4%
<b>Annual</b>	<b>241.7</b>	<b>-0.6%</b>	<b>24.76</b>	<b>0.6%</b>	<b>5,981</b>	<b>0.0%</b>
Q1 2018	57.0	-2.9%	25.46	0.5%	1,452	-2.4%
Q2 2018	59.4	-0.3%	24.88	0.0%	1,477	-0.3%
Q3 2018	59.8	-1.0%	24.60	0.5%	1,471	-0.5%
Q4 2018	62.6	-0.7%	24.40	0.3%	1,526	-0.4%
<b>Annual</b>	<b>238.7</b>	<b>-1.2%</b>	<b>24.83</b>	<b>0.3%</b>	<b>5,926</b>	<b>-0.9%</b>



## UB BONELESS-SKINLESS TURKEY BREAST, TOM, FRESH

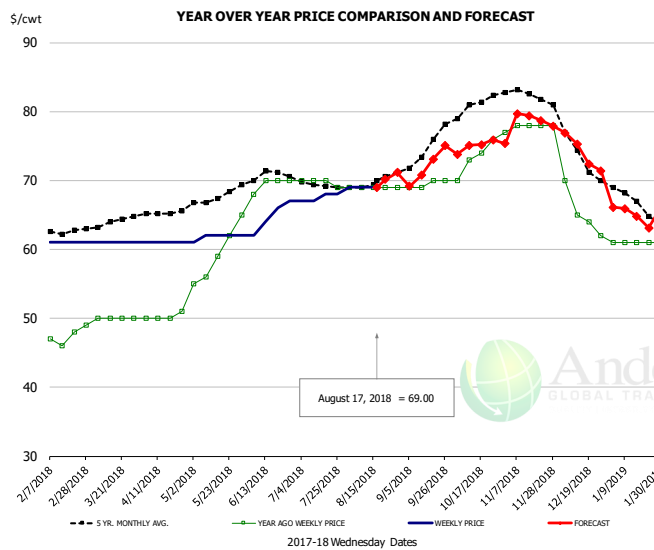


### PRICE HISTORY AND FORECAST

- DOLLARS PER CWT -

	5-YR. AVG	YR. AGO	CURRENT	FORECAST	% CH.
Feb	247.05	160.25	155.00		-3.3%
Mar	234.65	155.00	157.50		1.6%
Apr	240.44	153.50	176.00		14.7%
May	251.25	153.00	184.00		20.3%
Jun	268.20	153.00	187.50		22.5%
Jul	290.96	153.00	192.00		25.5%
8-Aug		153.00	196.00		28.1%
17-Aug		153.00	198.00		29.4%
29-Aug		153.00		204.81	33.9%
Aug	306.55	153.00		200.00	30.7%
Sep	311.80	153.00		219.00	43.1%
Oct	313.89	155.00		229.00	47.7%
Nov	310.34	155.00		233.00	50.3%
Dec	299.00	155.00		215.00	38.7%
Jan	281.95	155.00		199.00	28.4%

## UB DRUMS, EAST, TOM, FROZEN

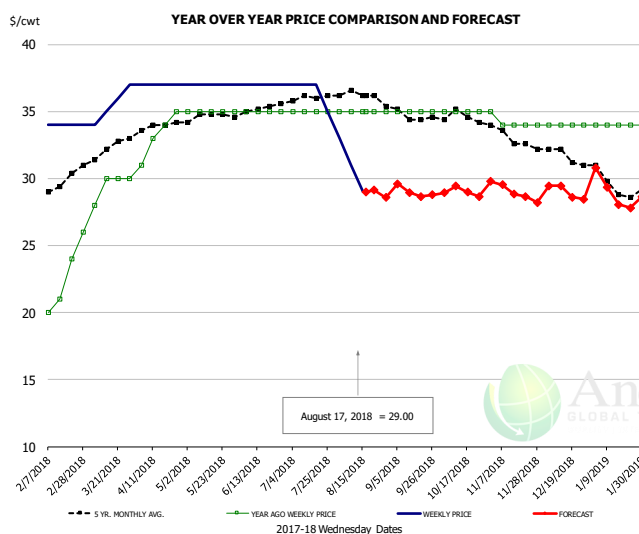


### PRICE HISTORY AND FORECAST

- DOLLARS PER CWT -

	5-YR. AVG	YR. AGO	CURRENT	FORECAST	% CH.
Feb	62.80	47.00	61.00		29.8%
Mar	63.70	49.80	61.00		22.5%
Apr	65.33	50.25	61.00		21.4%
May	67.56	59.40	61.80		4.0%
Jun	70.44	69.50	64.75		-6.8%
Jul	69.35	69.75	67.50		-3.2%
8-Aug		69.00	69.00		0.0%
17-Aug		69.00	69.00		0.0%
29-Aug		69.00		71.16	3.1%
Aug	69.81	69.00		69.00	0.0%
Sep	73.55	69.50		72.00	3.6%
Oct	80.55	73.25		75.00	2.4%
Nov	82.65	77.80		79.00	1.5%
Dec	74.18	65.25		74.00	13.4%
Jan	67.30	61.00		65.00	6.6%

## MECH. SEP. TURKEY-FRESH-UNDER 20% FAT, SOME SKIN

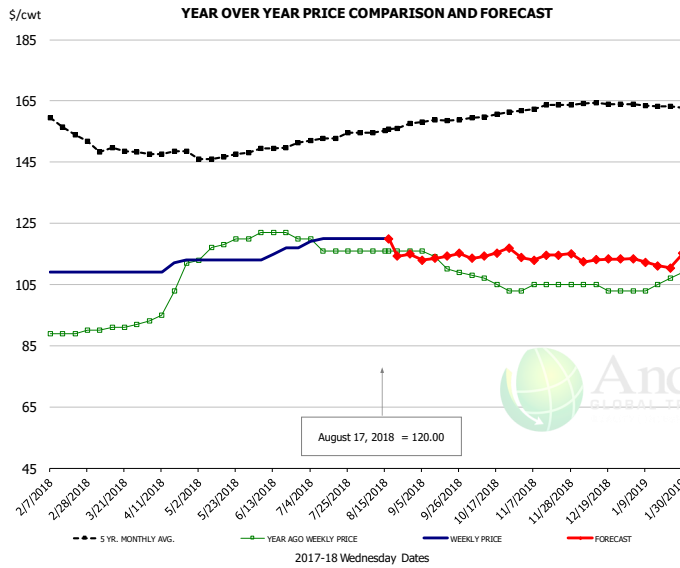


### PRICE HISTORY AND FORECAST

- DOLLARS PER CWT -

	5-YR. AVG	YR. AGO	CURRENT	FORECAST	% CH.
Feb	29.40	21.25	34.00		60.0%
Mar	31.99	28.80	35.50		23.3%
Apr	33.86	33.25	37.00		11.3%
May	34.65	35.00	37.00		5.7%
Jun	35.05	35.00	37.00		5.7%
Jul	35.96	35.00	36.50		4.3%
8-Aug		35.00	31.00		-11.4%
17-Aug		35.00	29.00		-17.1%
29-Aug		35.00		28.58	-18.4%
Aug	36.33	35.00		29.00	-17.1%
Sep	34.80	35.00		29.00	-17.1%
Oct	34.53	35.00		29.00	-17.1%
Nov	33.19	34.20		29.00	-15.2%
Dec	31.76	34.00		29.00	-14.7%
Jan	29.55	34.00		29.00	-14.7%

## TURKEY MEAT - SCAPULA, FROZEN

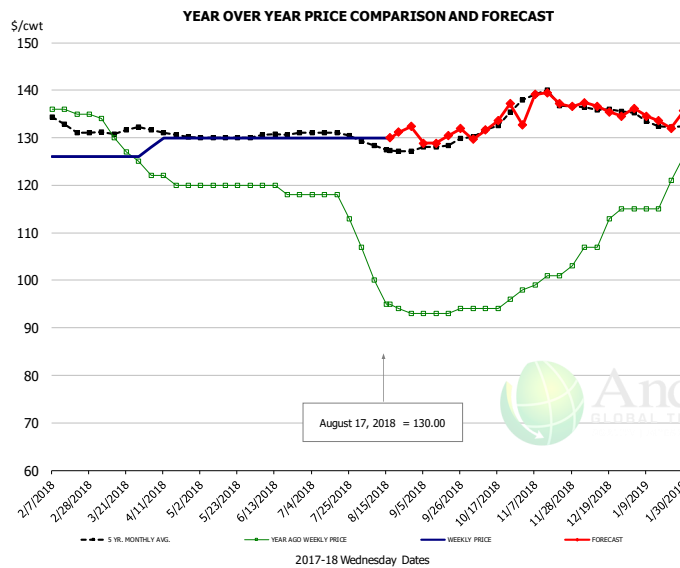


### PRICE HISTORY AND FORECAST

- DOLLARS PER CWT -

	5-YR. AVG	YR. AGO	CURRENT	FORECAST	% CH.
Feb	158.20	89.00	109.00		22.5%
Mar	148.76	90.80	109.00		20.0%
Apr	147.41	100.75	110.75		9.9%
May	146.58	117.60	113.00		-3.9%
Jun	148.98	121.50	115.50		-4.9%
Jul	152.57	117.00	119.75		2.4%
8-Aug		116.00	120.00		3.4%
17-Aug		116.00	120.00		3.4%
29-Aug		116.00		114.94	-4.9%
Aug	155.15	116.00		114.00	-1.7%
Sep	158.13	112.25		114.00	1.6%
Oct	160.22	105.75		115.00	8.7%
Nov	163.02	104.60		114.00	9.0%
Dec	164.07	104.00		113.00	8.7%
Jan	163.63	105.40		112.00	6.3%

## UB TURKEY MEAT - THIGH, FRESH



### PRICE HISTORY AND FORECAST

- DOLLARS PER CWT -

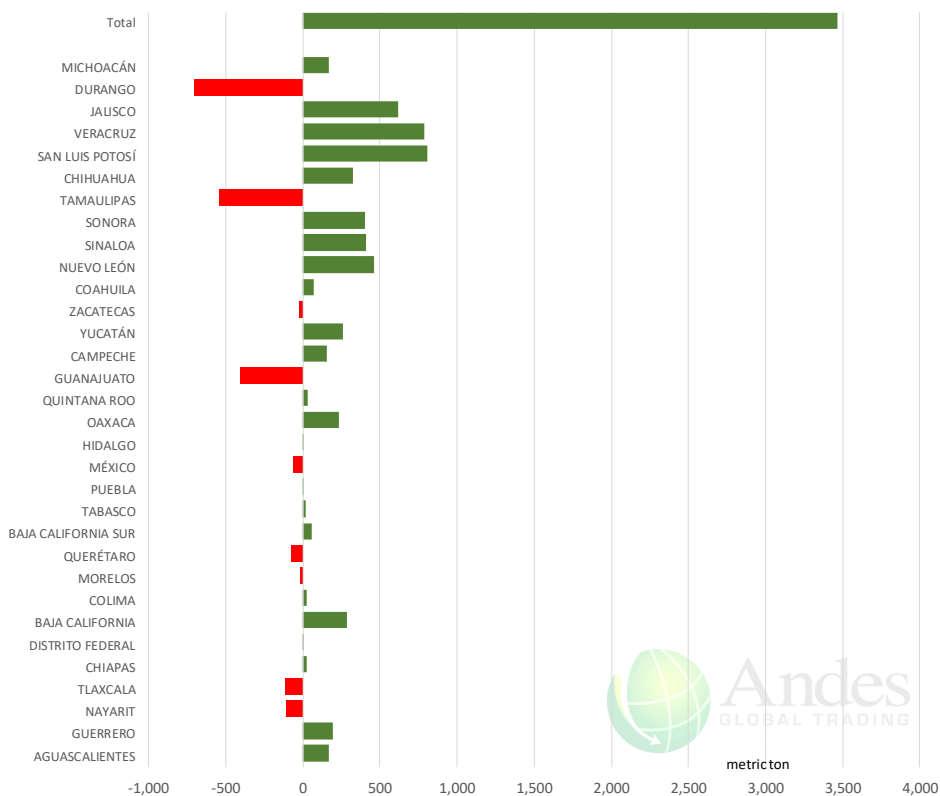
	5-YR. AVG	YR. AGO	CURRENT	FORECAST	% CH.
Feb	133.30	135.75	126.00		-7.2%
Mar	130.89	130.20	126.00		-3.2%
Apr	131.10	121.00	129.50		7.0%
May	130.04	120.00	130.00		8.3%
Jun	130.40	119.00	130.00		9.2%
Jul	130.83	116.75	130.00		11.3%
8-Aug		100.00	130.00		30.0%
17-Aug		95.00	130.00		36.8%
29-Aug		93.00		132.36	42.3%
Aug	127.81	97.80		130.00	32.9%
Sep	128.05	93.25		130.00	39.4%
Oct	132.22	94.50		133.00	40.7%
Nov	138.75	100.40		138.00	37.5%
Dec	136.47	110.50		136.00	23.1%
Jan	133.68	118.40		134.00	13.2%



# Mexico Beef Production

## CONTRIBUTION TO YEAR/YEAR CHANGE IN MEXICO BEEF PRODUCTION

METRIC TON. July 2018 VS. July 2017



# Mexico Pork Prices

## Precio Promedio Semanal de Cerdo en Obrador en Mexico

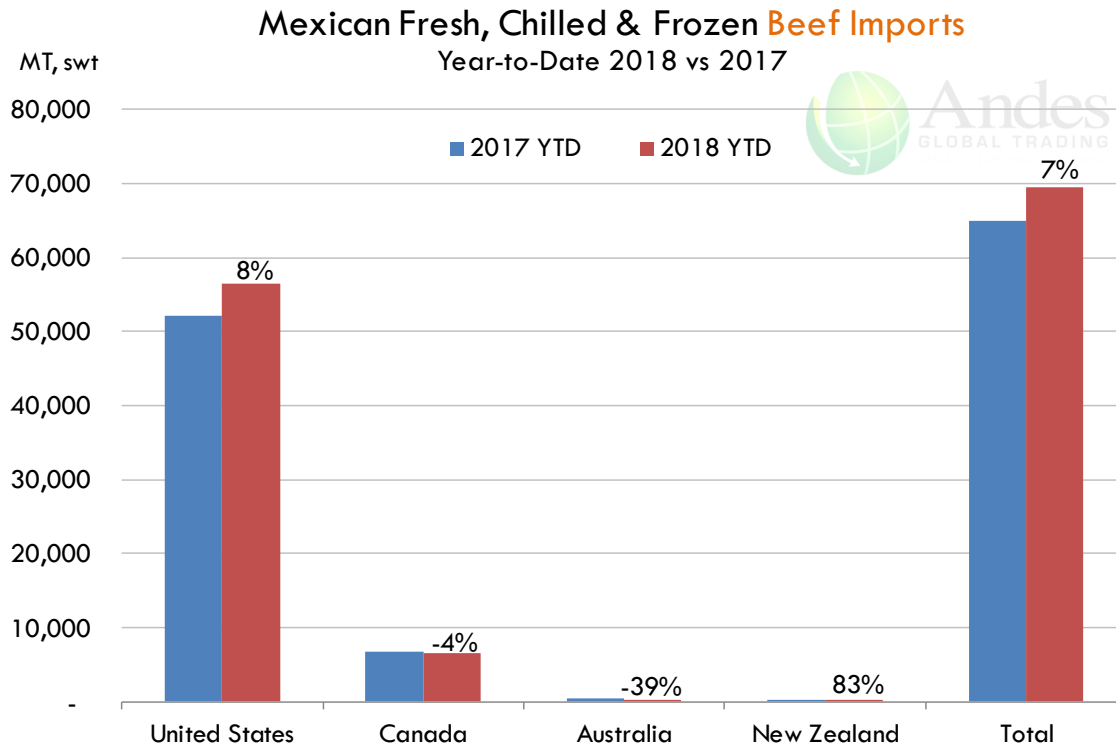
W/E: 10/8/2018	Ultimo	Anterior	Cambio
Peso / 1 USD	18.91	18.56	

	USD/KG	USD/KG	
Supremo LAB Rastro	1.88	1.87	0.00
Carne en Canal	2.67	2.78	-0.11
Cabeza	1.48	1.51	-0.03
Espaldilla	3.07	3.10	-0.03
Pecho	3.65	3.69	-0.04
Entrecot	2.99	2.99	0.00
Tocino	3.36	3.61	-0.25
Pierna	3.36	3.37	-0.01
Cuero	1.64	1.70	-0.06

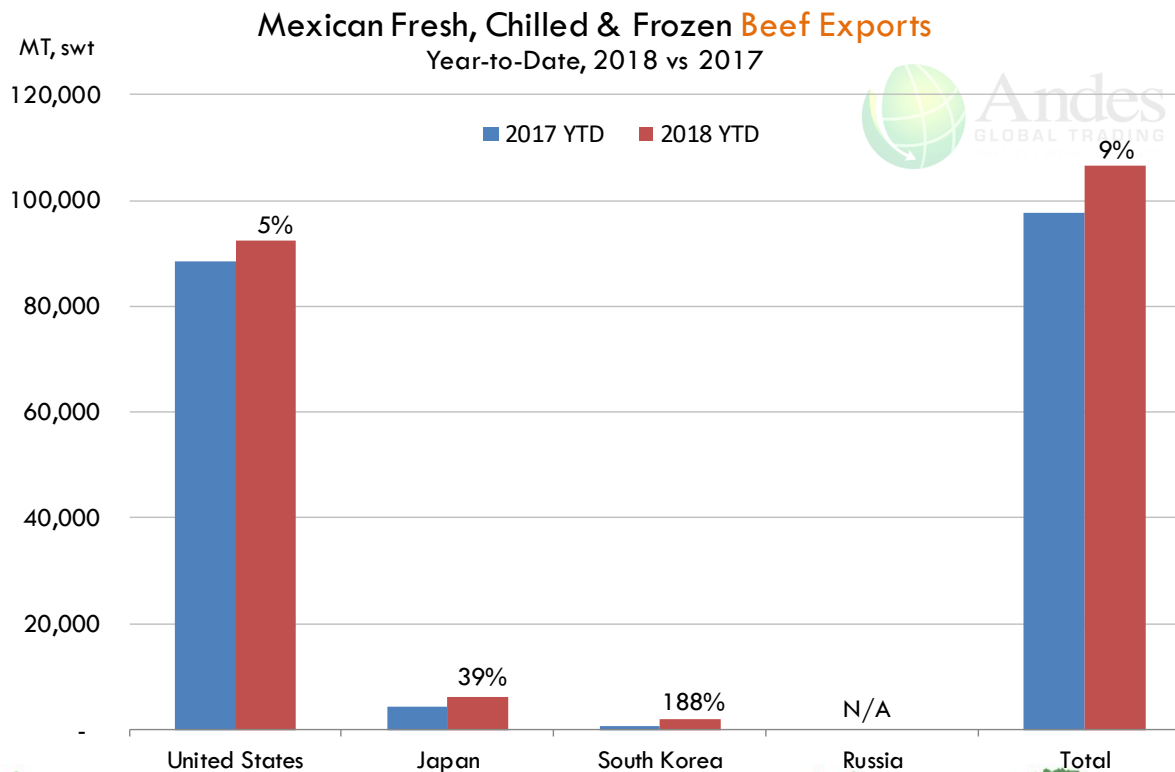
Fuente: SNIIM



## Mexico Beef Imports



## Mexico Beef Exports



**PRECIO SEMANAL DEL CERDO EN PIE (USD/KG)**

<i>Semana</i>	<i>Antioquia</i>	<i>Eje Cafetero</i>	<i>Valle</i>	<i>Caribe Norte</i>	<i>Bogotá</i>	<i>Nacional</i>	<i>COP/USD</i>
20-Apr-18	1.83	1.86	1.84	1.90	1.89	1.85	2761
27-Apr-18	1.78	1.78	1.80	1.84	1.83	1.79	2807
04-May-18	1.73	1.73	1.75	1.83	1.81	1.75	2840
11-May-18	1.72	1.71	1.74	1.77	1.78	1.74	2836
18-May-18	1.65	1.70	1.66	1.74	1.73	1.67	2918
25-May-18	1.64	1.65	1.69	1.75	1.75	1.67	2878
01-Jun-18	1.63	1.67	1.65	1.74	1.74	1.66	2868
08-Jun-18	1.59	1.65	1.64	1.75	1.72	1.63	2858
15-Jun-18	1.56	1.58	1.61	1.72	1.68	1.59	2895
22-Jun-18	1.54	1.58	1.56	1.70	1.67	1.58	2917
29-Jun-18	1.52	1.60	1.57	1.69	1.66	1.57	2930
06-Jul-18	1.55	1.63	1.60	1.73	1.70	1.60	2874
13-Jul-18	<b>1.56</b>	<b>1.64</b>	<b>1.61</b>	<b>1.73</b>	<b>1.70</b>	<b>1.61</b>	<b>2859</b>

Fuente: Asociación pork colombia

**PRECIO SEMANAL DE LA CANAL CALIENTE DE CERDO (USD/KG)**

<i>Semana</i>	<i>Antioquia</i>	<i>Eje Cafetero</i>	<i>Valle</i>	<i>Caribe Norte</i>	<i>Bogotá</i>	<i>Nacional</i>	<i>COP/USD</i>
20-Apr-18	2.46	2.43	2.45	2.50	2.52	2.47	2761
27-Apr-18	2.36	2.33	2.38	2.42	2.45	2.39	2807
04-May-18	2.30	2.26	2.33	2.37	2.40	2.34	2840
11-May-18	2.27	2.23	2.32	2.35	2.39	2.30	2836
18-May-18	2.18	2.24	2.20	2.26	2.31	2.22	2918
25-May-18	2.17	2.14	2.25	2.30	2.32	2.22	2878
01-Jun-18	2.15	2.21	2.21	2.31	2.33	2.21	2868
08-Jun-18	2.10	2.15	2.18	2.33	2.28	2.16	2858
15-Jun-18	2.05	2.06	2.15	2.19	2.23	2.11	2895
22-Jun-18	2.03	2.07	2.08	2.25	2.22	2.10	2917
29-Jun-18	2.01	2.10	2.08	2.23	2.21	2.09	2930
06-Jul-18	2.05	2.14	2.12	2.27	2.25	2.13	2874
13-Jul-18	<b>2.06</b>	<b>2.15</b>	<b>2.13</b>	<b>2.29</b>	<b>2.26</b>	<b>2.14</b>	<b>2859</b>














Fuente: Asociación pork colombia



## Global Pork Pricing Trends

### World Hog Prices, Various Styles, Dressed Wt. & Live Wt.

Prices in US\$ Equivalent

			This Week	Prev. Wk.	Year Ago		
			10-Aug-18	3-Aug-18	11-Aug-17		% ch.
	US Lean Hog Carcass, IA/MN, (US\$/kg)	carcass wt.	1.04	1.27	1.77	↓	-41%
	CAN Hog Carcass (US\$/kg)	carcass wt.	1.13	1.27	1.53	↓	-26%
	AUS BAC Carcass 80-95kg (US\$/kg)	carcass wt.	2.87	2.91	3.36	↓	-15%
	EU-28 Slaughter Pigs, 70-87 kg, (US\$/kg)	carcass wt.	1.66	1.66	2.00	↓	-17%
	Denmark Slaughter Pigs, 70-87 kg, (US\$/kg)	carcass wt.	1.46	1.48	1.83	↓	-20%
	Germany Slaughter Pigs, 70-87 kg, (US\$/kg)	carcass wt.	1.71	1.67	2.06	↓	-17%
	Spain Slaughter Pigs, 70-87 kg, (US\$/kg)	carcass wt.	1.73	1.76	2.05	↓	-16%
	France Slaughter Pigs, 70-87 kg, (US\$/kg)	carcass wt.	1.52	1.53	1.88	↓	-19%
	Argentina Live Hogs, (US\$/kg)	liveweight	0.87	0.93	1.03	↓	-15%
	Brazil Live Hogs, (US\$/kg)	liveweight	0.74	0.77	1.19	↓	-38%
	Chile Live Hogs, (US\$/kg)	liveweight	1.50	1.51	1.62	↓	-8%
	Mexico Live Pigs, (US\$/kg)	liveweight	1.69	1.68	1.76	↓	-4%
	China Hog Carcass, (US\$/kg)	carcass wt.	2.91	2.88	3.16	↓	-8%







## Estados Unidos

Miami, FL 33137

2800 Biscayne Blvd. Suite 555

Teléfono: + 1 (305) 290-3720

Fax: +1 (313) 486-6784

E-mail: [info@andesgt.com](mailto:info@andesgt.com)

## México

Monterrey, NL, CP 64710

Av. Morones prieto # 2805

Pte, Col. Lomas de San Francisco

Oficinas 209-210

Teléfono: +52 554 770 7770

## Colombia Bogotá D.C.

Teléfono: +57 (1) 382 6784

