



Andes
GLOBAL TRADING
QUALITY | INTEGRITY | TRUST



Inc. 5000²⁰¹⁷
LIST OF THE FASTEST-GROWING PRIVATE
COMPANIES IN AMERICA.

**SOUTH FLORIDA
BUSINESS JOURNAL**

*Top 50 Private Companies Fastest Growing
Private Companies 2016 & 2017*



Entrepreneurial awards



NEWSLETTER

August 8/2018

Summary	1
Pork Statistics	2
Pork Price Forecasts	3-7
Beef Statistics	8
Beef Price Forecasts	9-12
Chicken Statistics	13-14
Chicken Forecasts	15-17
Turkey Statistics	18
Turkey Forecasts	19-20
Exports	21-24
Statistics for South America	25-27
Global Pork Prices	28

Hogs / Pork

- Hog and pork markets in the US remain extremely volatile. In part this is driven by turbulence in export markets but also because end users are depleting inventories as they expect more supply and lower prices in the fall. Belly prices are down 70 cents in three weeks
- Smithfield idled some plants for scheduled maintenance two weeks ago, leading to a sharp decline in slaughter. Slaughter recovered this week and was up 3.6% compared to a year ago.
- Hog supplies should steadily increase in August and September, forecast at 3.5-4% higher than last year
- Export sales to Mexico were sharply higher in late July, leading to a notable improvement in ham prices.

Broiler / Chicken

- Faced with slumping chicken prices and increased competition from other proteins producers look poised to slow down production growth.
- The broiler hatching flock on July 1 was about 1 million head (58.3 vs 59.3) than the previous month. Still, the hatching flock remains about 2.2% higher than a year ago
- Prices for leg quarters are down as much as 25% compared to a year ago, breast meat is down about 15% and wings are down 31% compared to 2017 levels
- Chicken exports in June were 252k MT, 7.5% higher than the previous year. Exports to Mexico were 52k MT, 6% lower than a year ago. Lower prices were needed to move the additional tonnage. Value of exports was up only 1%.

Cattle / Beef

- CME fed cattle futures have been in a pattern whereby traders sell the market at the start of the week and then end up buying it by Friday.
- Beef packers have tried in vain to cause feedlots to lower prices. We think there will be ample beef features in August and packers do not have as many cattle purchased on a forward basis. This implies cattle prices will remain robust in the short term despite higher on feed supplies
- Beef exports have slowed down compared to May and early June but remain well above year ago. Forward beef sales have slowed down considerably as buyers suddenly face much higher asking prices for Q4 deliveries.

Turkey / Other Poultry

- Turkey supplies should be lower in the second half of the year. Poultry placements in June were down 5.8% compared to a year ago. Placements have declined on a y/y basis for the last seven consecutive months.
- It appears that the reductions in supply are starting to impact product markets. While whole bird prices remain flat due to ample freezer supplies, prices for turkey parts are higher. The price of fresh turkey breast meat last week was \$1.95/lb., 27.5% higher than a year ago. The price of turkey thigh meat is up 21.5%
- Higher prices have significantly impacted turkey export volume. June exports were 16,611 MT, 20% lower than the previous year.

Pork Market - Supply Situation & Outlook

Weekly Pork Production Statistics

Source: USDA

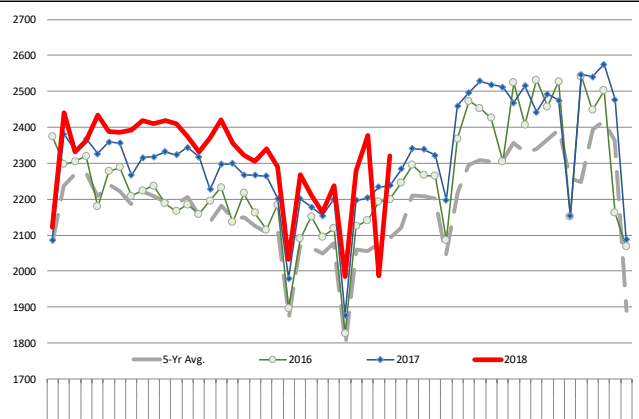
		Slaughter (1000 hd)	% CH.	Dressed Wt LBS	% CH.	Production (Million lbs)	% CH.
Year Ago	5-Aug-17	2,238		207.0		463.0	
This Week	4-Aug-18	2,320	3.6%	207.0	0.0%	480.7	3.8%
Last Week	28-Jul-18	1,987		208.0		412.4	
This Week	4-Aug-18	2,320	16.8%	207.0	-0.5%	480.7	16.6%
YTD Last Year	5-Aug-17	69,719		210.8		14,703	
YTD This Year	4-Aug-18	71,495	2.5%	212.2	0.7%	15,174	3.2%

Quarterly History + Forecasts

Q1 2016	29,262		212.9		6,230	
Q2 2016	28,116		212.1		5,963	
Q3 2016	29,323		208.0		6,100	
Q4 2016	31,539		210.8		6,648	
Annual	118,240	Y/Y % CH.	211.0	Y/Y % CH.	24,941	Y/Y % CH.
Q1 2017	30,178	3.1%	212.4	-0.2%	6,410	2.9%
Q2 2017	29,165	3.7%	210.4	-0.8%	6,137	2.9%
Q3 2017	29,967	2.2%	208.2	0.1%	6,240	2.3%
Q4 2017	32,007	1.5%	212.3	0.7%	6,796	2.2%
Annual	121,317	2.6%	210.9	0.0%	25,584	2.6%
Q1 2018	31,075	3.0%	213.8	0.7%	6,645	3.7%
Q2 2018	29,982	2.8%	211.3	0.4%	6,335	3.2%
Q3 2018	30,896	3.1%	208.8	0.3%	6,451	3.4%
Q4 2018	33,607	5.0%	213.5	0.5%	7,175	5.6%
Annual	125,560	3.5%	211.9	0.5%	26,606	4.0%

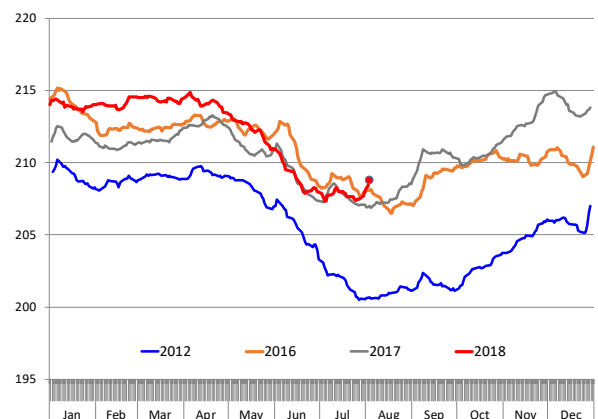
WEEKLY HOG SLAUGHTER. '000 HEAD

Source: USDA

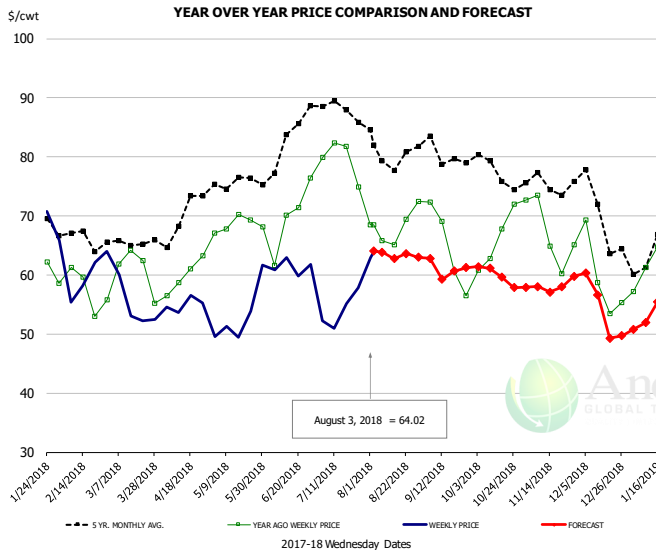


Barrow/Gilt Dressed Carcass Weights, 5-day Moving Avg. - All hogs

Based on Daily MPR Report, LM_HG201. Data through Aug 3, 2018



Ham, 23-27# Trmd Selected Ham, FOB Plant, USDA

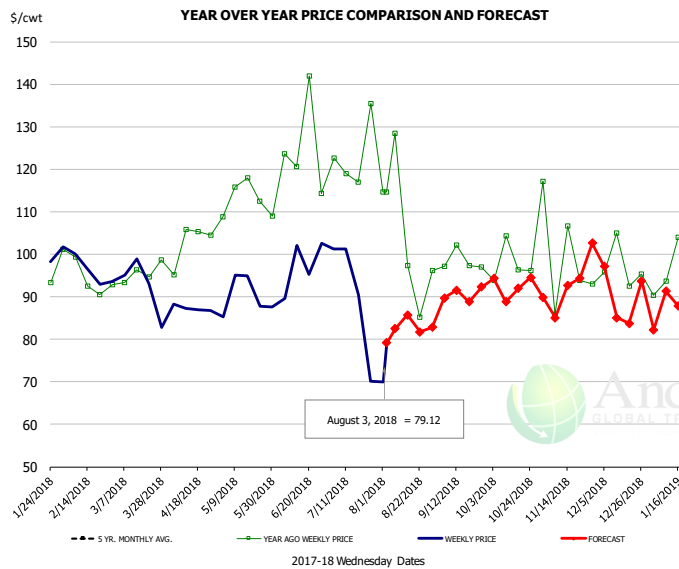


PRICE HISTORY AND FORECAST

- DOLLARS PER CWT -

	5-YR. AVG	YR. AGO	CURRENT	FORECAST	% CH.
Feb	66.71	57.82	60.35		4.4%
Mar	64.82	60.05	56.02		-6.7%
Apr	68.51	59.06	54.48		-7.8%
May	75.03	67.94	50.79		-25.2%
Jun	78.69	66.60	61.42		-7.8%
Jul	87.32	78.59	53.62		-31.8%
25-Jul		74.92	57.89		-22.7%
3-Aug		68.50	64.02		-6.5%
15-Aug		65.07		62.78	-3.5%
Aug	81.07	67.33		64.00	-4.9%
Sep	78.03	63.74		61.00	-4.3%
Oct	75.53	66.19		60.00	-9.4%
Nov	74.87	66.48		58.00	-12.8%
Dec	69.31	59.78		54.00	-9.7%
Jan	62.78	62.50		53.00	-15.2%

Ham, Inner Shank, FOB Plant, USDA

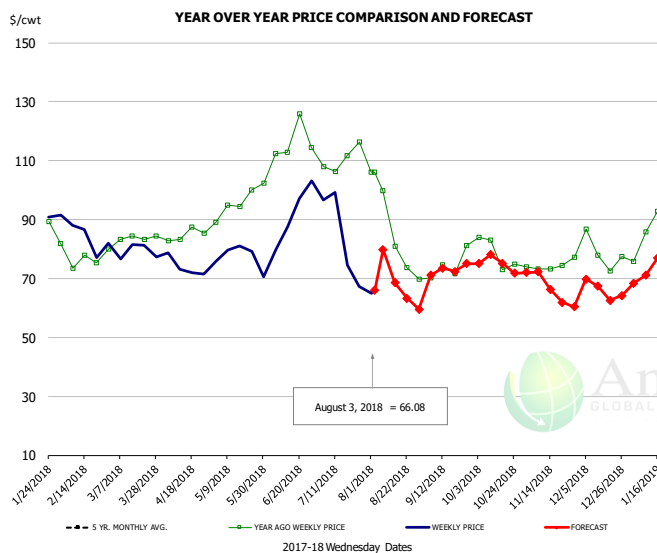


PRICE HISTORY AND FORECAST

- DOLLARS PER CWT -

	5-YR. AVG	YR. AGO	CURRENT	FORECAST	% CH.
Feb	96.36	97.40	95.63		-1.8%
Mar	97.05	97.32	91.94		-5.5%
Apr	101.46	101.29	87.77		-13.3%
May	107.03	111.79	88.00		-21.3%
Jun	117.48	118.98	90.75		-23.7%
Jul	126.39	120.57	83.12		-31.1%
25-Jul		135.41	70.16		-48.2%
3-Aug		114.62	79.12		-31.0%
15-Aug		114.62		85.73	-25.2%
Aug	108.29	99.62		83.00	-16.7%
Sep	110.13	99.43		90.00	-9.5%
Oct	112.01	98.45		93.00	-5.5%
Nov	102.49	95.16		90.00	-5.4%
Dec	99.02	96.14		93.00	-3.3%
Jan	94.68	97.71		89.00	-8.9%

Ham, Outer Shank, FOB Plant, USDA

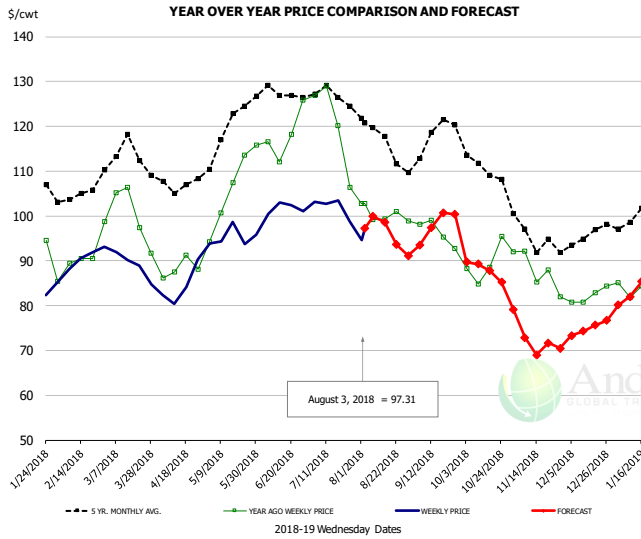


PRICE HISTORY AND FORECAST

- DOLLARS PER CWT -

	5-YR. AVG	YR. AGO	CURRENT	FORECAST	% CH.
Feb	78.59	76.52	80.10		4.7%
Mar	81.57	82.65	79.95		-3.3%
Apr	87.99	84.27	71.59		-15.1%
May	94.83	95.41	77.70		-18.6%
Jun	109.22	113.11	89.43		-20.9%
Jul	112.56	109.58	83.07		-24.2%
25-Jul		116.45	67.27		-42.2%
3-Aug		106.06	66.08		-37.7%
15-Aug		106.06		68.49	-35.4%
Aug	94.19	85.98		71.00	-17.4%
Sep	81.02	71.09		73.00	2.7%
Oct	86.31	76.29		75.00	-1.7%
Nov	77.63	74.72		66.00	-11.7%
Dec	71.31	76.96		66.00	-14.2%
Jan	77.45	85.15		74.00	-13.1%

Loin, 1/4 Trimmed Loin VAC, FOB Plant, USDA

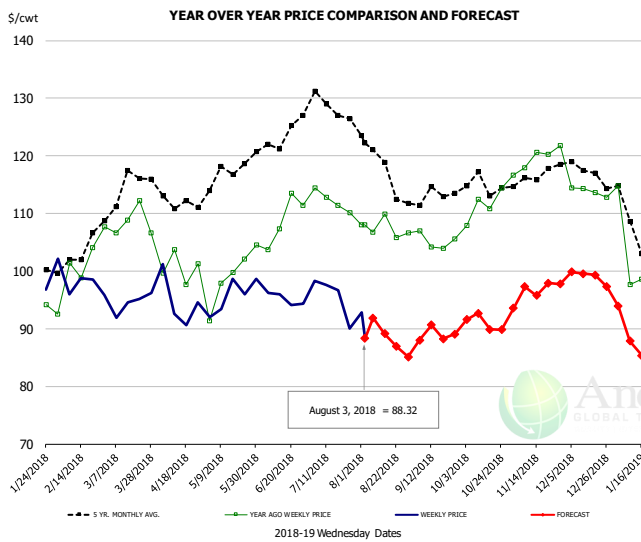


PRICE HISTORY AND FORECAST

- DOLLARS PER CWT -

	5-YR. AVG	YR. AGO	CURRENT	FORECAST	% CH.
Feb	104.45	89.63	89.29		-0.4%
Mar	113.06	99.46	89.02		-10.5%
Apr	106.48	88.05	83.04		-5.7%
May	118.04	104.30	95.89		-8.1%
Jun	126.62	117.69	101.46		-13.8%
Jul	126.27	119.37	97.82		-18.1%
25-Jul		106.37	98.89		-7.0%
3-Aug		102.75	97.31		-5.3%
15-Aug		99.30		98.65	-0.6%
Aug	116.55	100.76		97.00	-3.7%
Sep	115.58	95.20		98.00	2.9%
Oct	110.13	89.14		88.00	-1.3%
Nov	95.07	85.71		72.00	-16.0%
Dec	94.49	82.45		75.00	-9.0%
Jan	98.84	83.52		83.00	-0.6%

Picnic, Picnic Cushion Meat Combo, FOB Plant, USDA

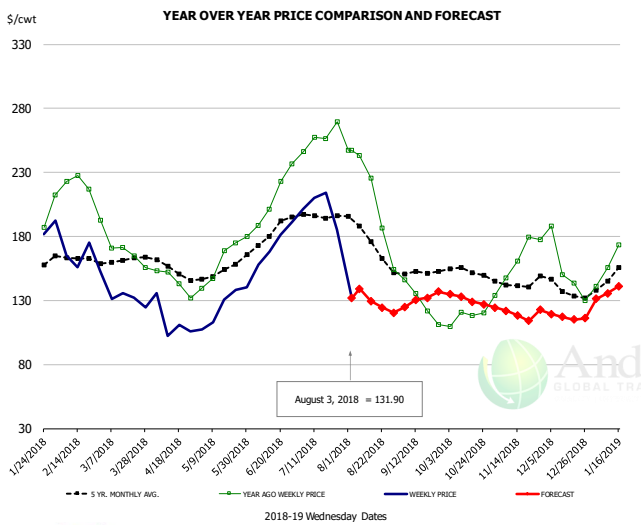


PRICE HISTORY AND FORECAST

- DOLLARS PER CWT -

	5-YR. AVG	YR. AGO	CURRENT	FORECAST	% CH.
Feb	100.89	98.54	96.04		-2.5%
Mar	114.51	105.76	93.97		-11.1%
Apr	111.81	99.38	93.53		-5.9%
May	115.08	99.50	94.84		-4.7%
Jun	122.70	108.28	95.67		-11.7%
Jul	126.01	111.71	92.77		-17.0%
25-Jul		110.17	90.09		-18.2%
3-Aug		108.05	88.32		-18.3%
15-Aug		109.88		89.16	-18.9%
Aug	118.40	107.33		89.00	-17.1%
Sep	112.11	104.50		89.00	-14.8%
Oct	114.33	111.66		91.00	-18.5%
Nov	115.84	118.16		97.00	-17.9%
Dec	116.82	114.89		99.00	-13.8%
Jan	104.81	100.33		88.00	-12.3%

Belly, Derind Belly 9-13#, FOB Plant, USDA



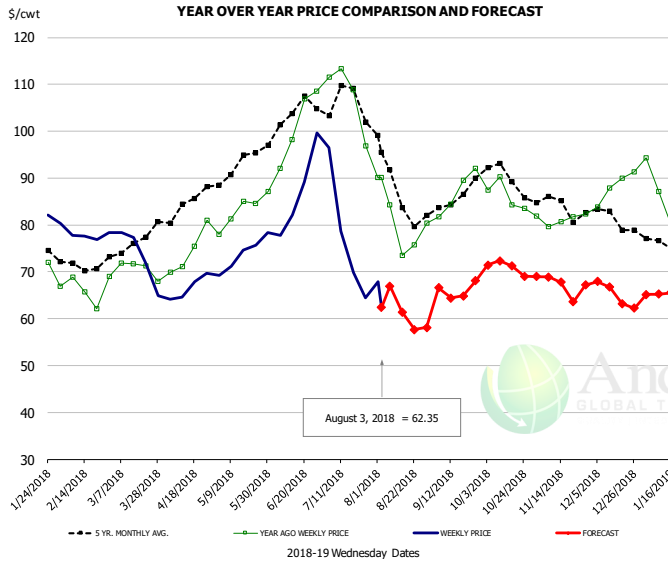
PRICE HISTORY AND FORECAST

- DOLLARS PER CWT -

	5-YR. AVG	YR. AGO	CURRENT	FORECAST	% CH.
Feb	162.69	216.78	162.13		-25.2%
Mar	160.97	168.90	133.73		-20.8%
Apr	152.30	143.77	106.51		-25.9%
May	150.96	160.70	124.74		-22.4%
Jun	181.63	219.23	171.90		-21.6%
Jul	194.62	256.47	194.29		-24.2%
25-Jul		269.56	185.51		-31.2%
3-Aug		247.27	131.90		-46.7%
15-Aug		225.57		129.66	-42.5%
Aug	171.76	193.19		132.00	-31.7%
Sep	151.25	135.34		131.00	-3.2%
Oct	150.98	117.03		131.00	11.9%
Nov	141.96	161.13		121.00	-24.9%
Dec	135.82	144.34		117.00	-18.9%
Jan	149.62	160.63		137.00	-14.7%



Trim, Picnic Meat Combo Cushion Out, FOB Plant, USDA

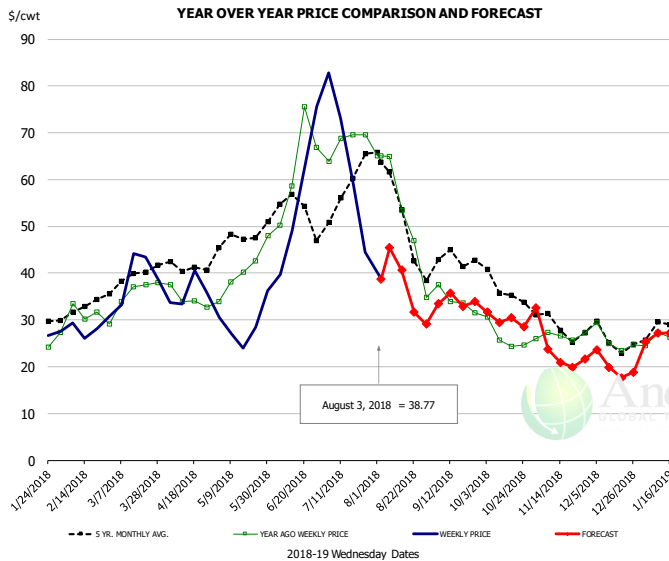


PRICE HISTORY AND FORECAST

- DOLLARS PER CWT -

	5-YR. AVG	YR. AGO	CURRENT	FORECAST	% CH.
Feb	71.14	65.22	77.69		19.1%
Mar	75.81	71.23	72.07		1.2%
Apr	83.31	74.81	65.64		-12.3%
May	91.44	82.92	72.77		-12.2%
Jun	101.13	97.01	84.03		-13.4%
Jul	104.20	103.80	74.98		-27.8%
25-Jul		96.89	64.50		-33.4%
3-Aug		90.16	62.35		-30.8%
15-Aug		73.51		61.38	-16.5%
Aug	87.00	80.15		63.00	-21.4%
Sep	84.69	86.68		66.00	-23.9%
Oct	89.19	85.45		71.00	-16.9%
Nov	83.87	81.12		67.00	-17.4%
Dec	81.61	87.11		65.00	-25.4%
Jan	75.96	85.06		66.00	-22.4%

Trim, 42% Trim Combo, FOB Plant, USDA

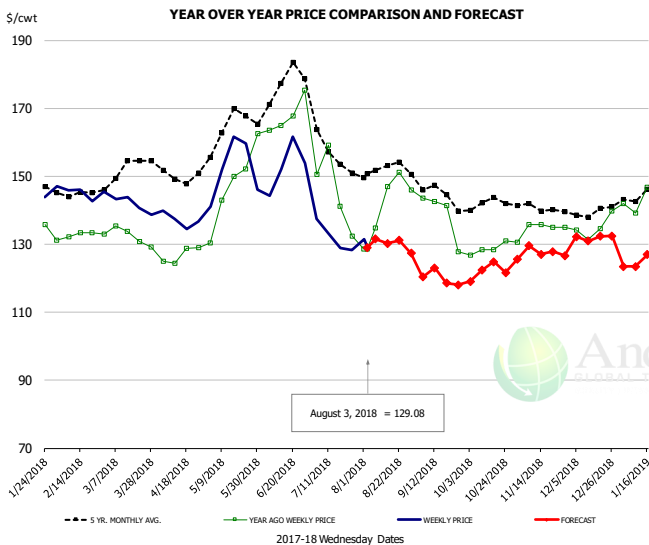


PRICE HISTORY AND FORECAST

- DOLLARS PER CWT -

	5-YR. AVG	YR. AGO	CURRENT	FORECAST	% CH.
Feb	32.11	30.64	27.85		-9.1%
Mar	38.65	35.08	37.49		6.9%
Apr	41.05	34.21	34.69		1.4%
May	46.23	38.73	26.67		-31.1%
Jun	53.15	62.20	51.54		-17.1%
Jul	56.30	68.68	54.13		-21.2%
25-Jul		69.57	44.51		-36.0%
3-Aug		65.09	38.77		-40.4%
15-Aug		53.39		40.64	-23.9%
Aug	49.58	49.73		39.00	-21.6%
Sep	41.16	33.37		34.00	1.9%
Oct	35.63	25.89		30.00	15.9%
Nov	28.68	27.04		22.00	-18.6%
Dec	25.36	25.34		20.00	-21.1%
Jan	27.34	26.66		26.00	-2.5%

Sparerib, Trmd Sparerib - MED, FOB Plant, USDA



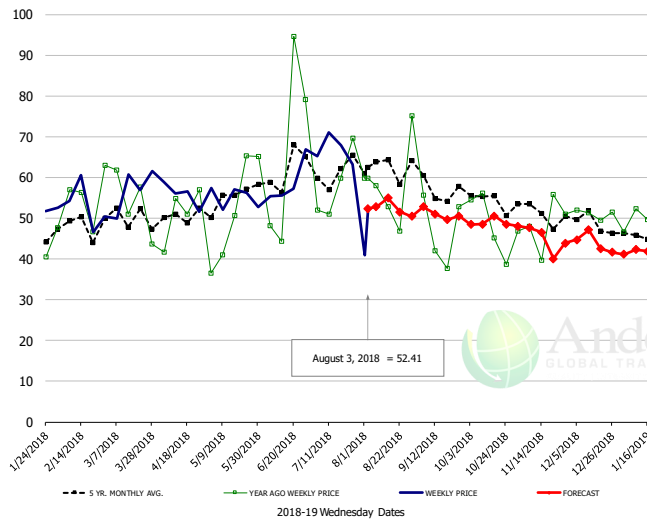
PRICE HISTORY AND FORECAST

- DOLLARS PER CWT -

	5-YR. AVG	YR. AGO	CURRENT	FORECAST	% CH.
Feb	145.15	132.30	143.84		8.7%
Mar	150.48	131.43	141.98		8.0%
Apr	149.52	127.02	135.92		7.0%
May	162.22	145.15	149.99		3.3%
Jun	169.79	161.18	149.97		-7.0%
Jul	156.39	139.03	132.07		-5.0%
25-Jul		132.34	128.29		-3.1%
3-Aug		128.52	129.08		0.4%
15-Aug		146.92		130.20	-11.4%
Aug	151.04	142.61		130.00	-8.8%
Sep	143.06	133.22		120.00	-9.9%
Oct	141.16	128.54		122.00	-5.1%
Nov	140.41	134.77		128.00	-5.0%
Dec	138.88	134.64		132.00	-2.0%
Jan	143.29	142.08		125.00	-12.0%

Jowl, Skinned Combo, FOB Plant, USDA

YEAR OVER YEAR PRICE COMPARISON AND FORECAST



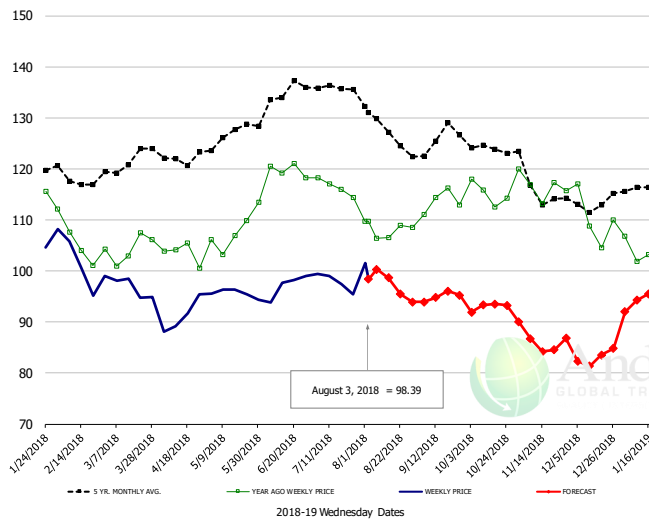
PRICE HISTORY AND FORECAST

- DOLLARS PER CWT -

	5-YR. AVG	YR. AGO	CURRENT	FORECAST	% CH.
Feb	45.87	49.42	51.68		4.6%
Mar	46.83	50.14	55.35		10.4%
Apr	49.61	51.40	51.87		0.9%
May	51.94	46.49	52.20		12.3%
Jun	57.23	53.82	60.69		12.8%
Jul	59.95	58.90	65.69		11.5%
25-Jul		69.70	63.19		-9.3%
3-Aug		59.88	52.41		-12.5%
15-Aug		52.85		54.96	4.0%
Aug	62.76	55.67		52.00	-6.6%
Sep	54.99	48.77		51.00	4.6%
Oct	53.90	52.81		49.00	-7.2%
Nov	48.05	46.87		45.00	-4.0%
Dec	47.41	49.78		44.00	-11.6%
Jan	43.96	49.02		42.00	-14.3%

Loin, Boneless Sirloin, FOB Plant, USDA

YEAR OVER YEAR PRICE COMPARISON AND FORECAST



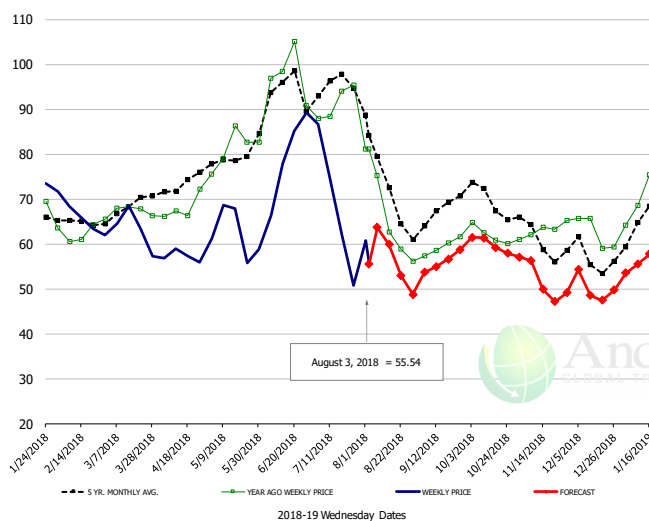
PRICE HISTORY AND FORECAST

- DOLLARS PER CWT -

	5-YR. AVG	YR. AGO	CURRENT	FORECAST	% CH.
Feb	118.48	104.86	100.43		-4.2%
Mar	121.25	103.21	96.86		-6.2%
Apr	121.24	102.18	91.01		-10.9%
May	125.62	106.40	96.16		-9.6%
Jun	132.48	117.57	97.04		-15.5%
Jul	135.97	115.45	99.05		-14.2%
25-Jul		114.41	95.40		-16.6%
3-Aug		109.71	98.39		-10.3%
15-Aug		106.56		98.64	-7.4%
Aug	128.03	107.63		98.00	-8.9%
Sep	124.57	112.96		95.00	-15.9%
Oct	123.86	115.06		93.00	-19.2%
Nov	115.25	116.12		87.00	-25.1%
Dec	111.54	108.40		83.00	-23.4%
Jan	115.67	103.75		94.00	-9.4%

Trim, 72% Trim Combo, FOB Plant, USDA

YEAR OVER YEAR PRICE COMPARISON AND FORECAST

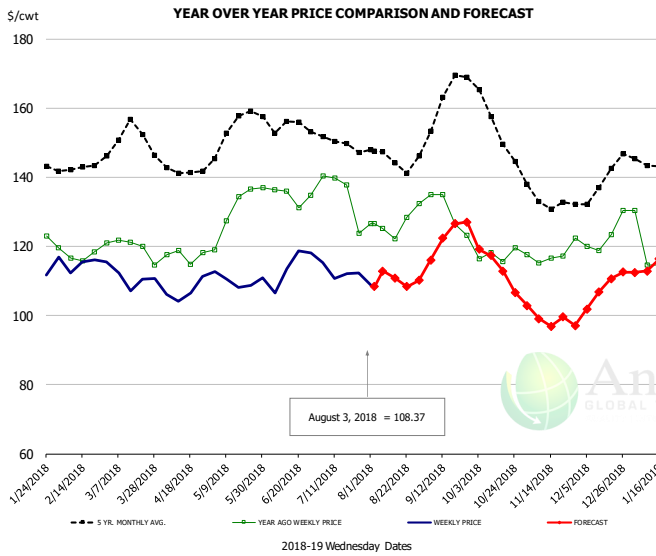


PRICE HISTORY AND FORECAST

- DOLLARS PER CWT -

	5-YR. AVG	YR. AGO	CURRENT	FORECAST	% CH.
Feb	64.07	61.56	64.93		5.5%
Mar	67.50	67.74	63.21		-6.7%
Apr	72.75	68.32	57.61		-15.7%
May	77.24	79.86	62.58		-21.6%
Jun	91.00	93.78	77.94		-16.9%
Jul	93.72	90.99	62.90		-30.9%
25-Jul		95.32	50.69		-46.8%
3-Aug		81.16	55.54		-31.6%
15-Aug		62.60		59.89	-4.3%
Aug	72.08	66.34		59.00	-11.1%
Sep	66.01	59.76		56.00	-6.3%
Oct	69.03	62.05		60.00	-3.3%
Nov	60.76	62.29		52.00	-16.5%
Dec	57.00	63.42		50.00	-21.2%
Jan	64.34	72.24		56.00	-22.5%

Loin, Bnls CC Strap-on, FOB Plant, USDA

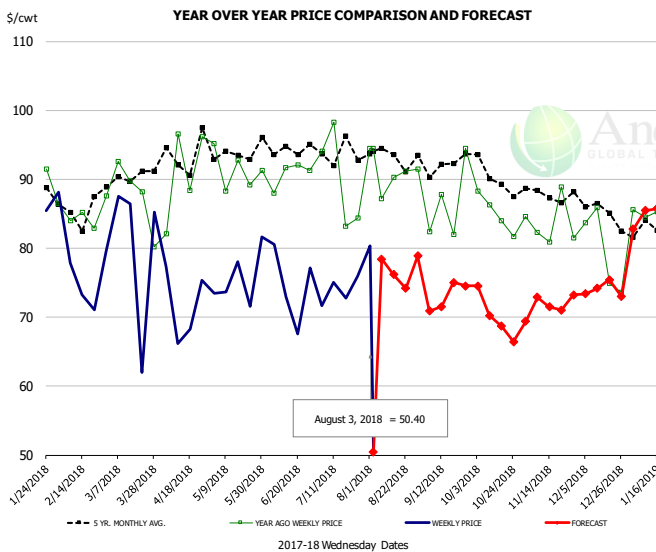


PRICE HISTORY AND FORECAST

- DOLLARS PER CWT -

	5-YR. AVG	YR. AGO	CURRENT	FORECAST	% CH.
Feb	140.63	115.91	113.92		-1.7%
Mar	151.08	119.07	111.33		-6.5%
Apr	141.17	116.48	106.60		-8.5%
May	151.95	129.76	109.80		-15.4%
Jun	152.26	133.31	111.13		-16.6%
Jul	148.67	132.32	112.74		-14.8%
25-Jul		123.79	112.29		-9.3%
3-Aug		126.55	108.37		-14.4%
15-Aug		122.13		110.87	-9.2%
Aug	144.13	126.17		111.00	-12.0%
Sep	157.93	127.18		123.00	-3.3%
Oct	152.77	117.34		114.00	-2.8%
Nov	133.02	116.77		99.00	-15.2%
Dec	137.49	122.82		108.00	-12.1%
Jan	139.68	116.43		114.00	-2.1%

Brisket Bones, Full, 30#, USDA, FRZ



PRICE HISTORY AND FORECAST

- DOLLARS PER CWT -

	5-YR. AVG	YR. AGO	CURRENT	FORECAST	% CH.
Feb	84.90	75.46			-11.1%
Mar	87.66	80.32			-8.4%
Apr	90.82	71.81			-20.9%
May	91.34	75.68			-17.1%
Jun	90.74	74.57			-17.8%
Jul	90.00	73.85			-17.9%
25-Jul		84.43	75.97		-10.0%
3-Aug		94.43	50.40		-46.6%
15-Aug		90.32		76.21	-15.6%
Aug	90.92	90.92		77.00	-15.3%
Sep	92.15	86.65		73.00	-15.8%
Oct	90.20	85.06		70.00	-17.7%
Nov	87.61	83.65		72.00	-13.9%
Dec	85.79	79.51		74.00	-6.9%
Jan	83.89	85.80		86.00	0.2%

Beef Market - Supply Situation & Outlook

Weekly Beef Production Statistics

Source: USDA

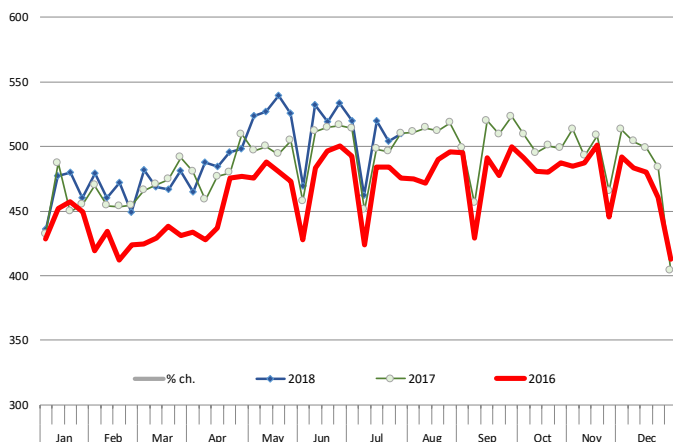
		Slaughter (1000 hd)	% CH.	Dressed Wt LBS	% CH.	Production (Million lbs)	% CH.
Year Ago	5-Aug-17	629.5		816.0		512.9	
This Week	4-Aug-18	626.0	-0.6%	809.0	-0.9%	505.5	-1.4%
Last Week	28-Jul-18	640.0		807.0		515.8	
This Week	4-Aug-18	626.0	-2.2%	809.0	0.2%	505.5	-2.0%
YTD Last Year	5-Aug-17	18,641		807.3		15,050	
YTD This Year	4-Aug-18	19,184	2.9%	810.3	0.4%	15,545	3.3%

Quarterly History + Forecasts

Q1 2016	7,184		826.5		5,938	
Q2 2016	7,631		810.9		6,187	
Q3 2016	7,845		824.9		6,472	
Q4 2016	7,919		836.6		6,625	
Annual	30,578	Y/Y % CH.	824.7	Y/Y % CH.	25,221	Y/Y % CH.
Q1 2017	7,714	7.4%	817.0	-1.1%	6,303	6.2%
Q2 2017	8,076	5.8%	793.3	-2.2%	6,407	3.5%
Q3 2017	8,254	5.2%	816.0	-1.1%	6,736	4.1%
Q4 2017	8,145	2.9%	827.8	-1.1%	6,742	1.8%
Annual	32,189	5.3%	813.5	-1.4%	26,187	3.8%
Q1 2018	7,877	2.1%	820.8	0.5%	6,465	2.6%
Q2 2018	8,440	4.5%	800.0	0.8%	6,752	5.4%
Q3 2018	8,568	3.8%	823.0	0.9%	7,052	4.7%
Q4 2018	8,381	2.9%	835.0	0.9%	6,998	3.8%
Annual	33,265	3.3%	819.7	0.8%	27,266	4.1%

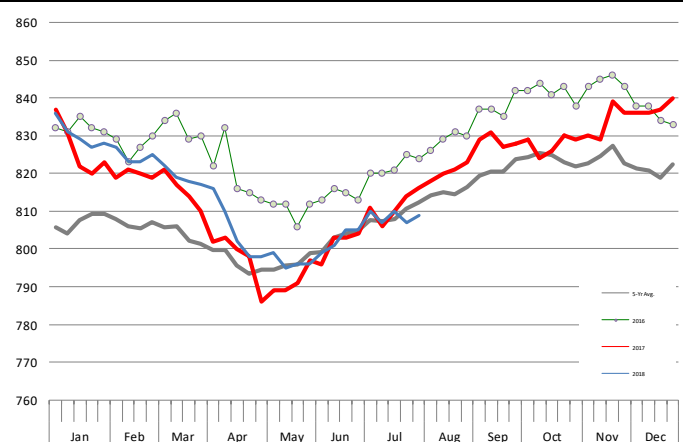
WEEKLY STEER AND HEIFER SLAUGHTER. '000 HEAD

Source: USDA



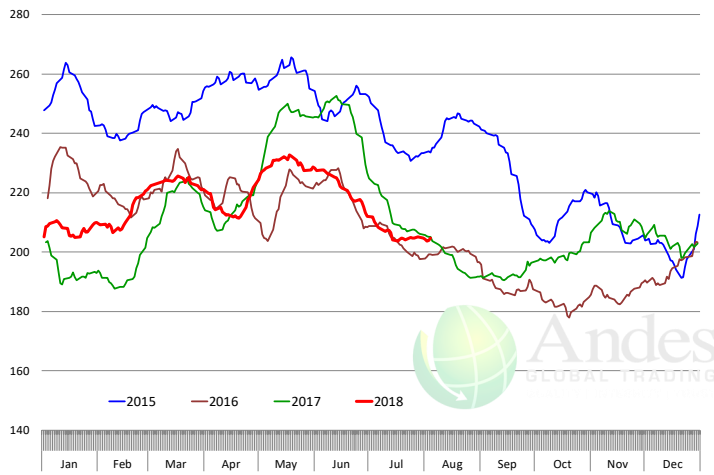
Weekly Average FI Cattle Carcass Weights (Includes Fed & Non Fed Cattle)

Average Dressed Weight Per Carcass. Data Source: USDA AMS

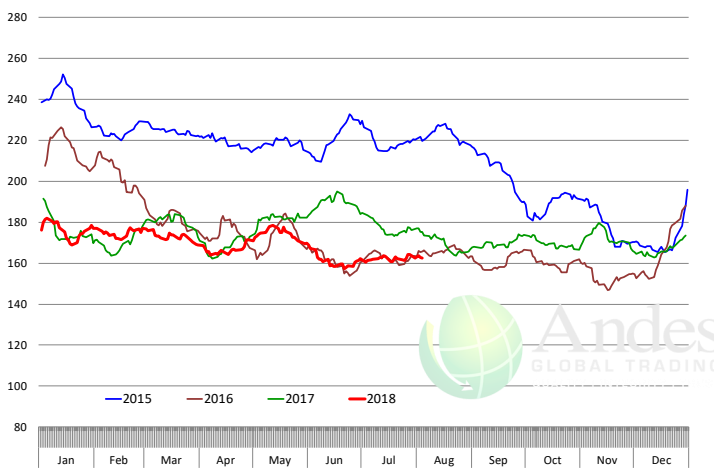


Beef Primal Values

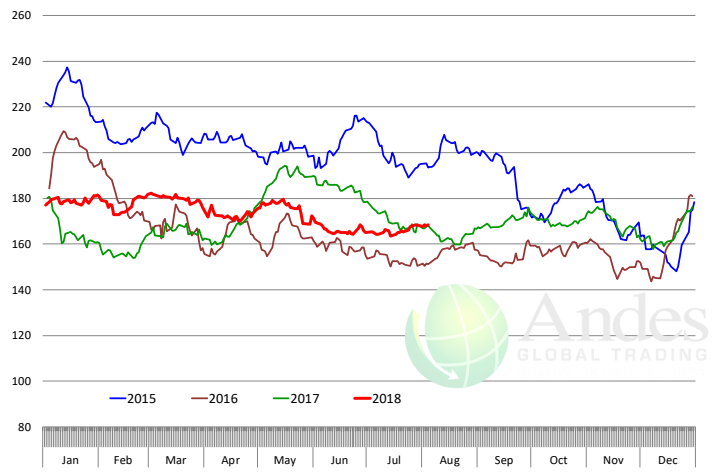
Beef Choice Cutout Value, USDA, Daily, \$/cwt



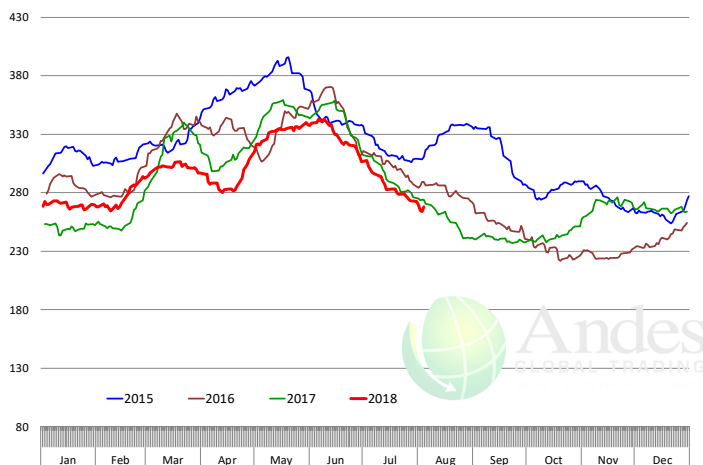
Primal Round Cutout Value, USDA, Daily, \$/cwt



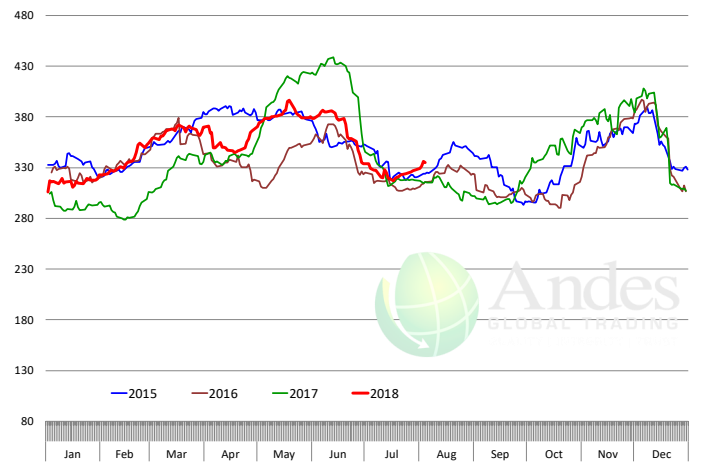
Primal Chuck Cutout Value, USDA, Daily, \$/cwt



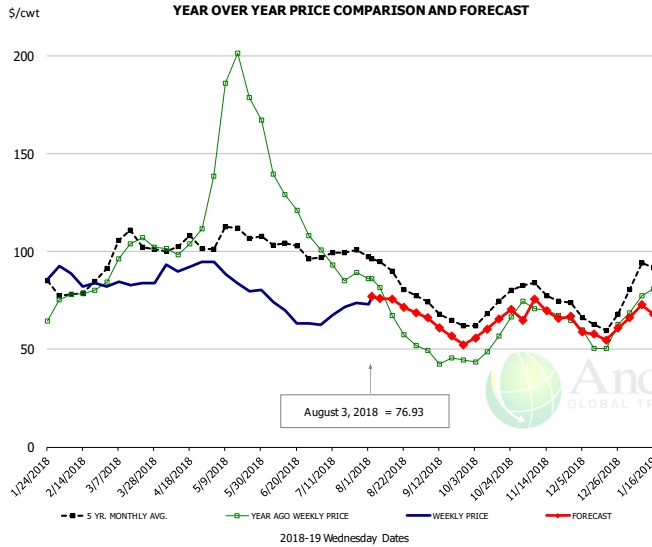
Primal Loin Cutout Value, USDA, Daily, \$/cwt



Primal Rib Cutout Value, USDA, Daily, \$/cwt



50CL BEEF TRIM, FRESH, NATIONAL, USDA

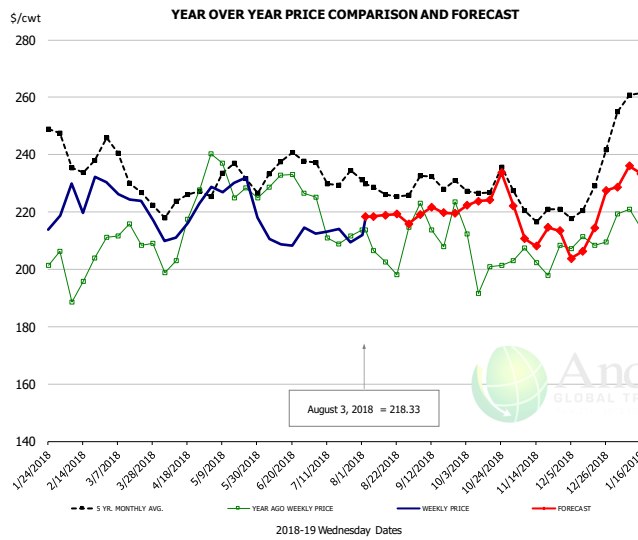


PRICE HISTORY AND FORECAST

- DOLLARS PER CWT -

	5-YR. AVG	YR. AGO	CURRENT	FORECAST	% CH.
Feb	78.59	79.34	83.66		5.4%
Mar	101.58	98.83	84.23		-14.8%
Apr	102.01	105.46	93.37		-11.5%
May	108.18	176.71	85.49		-51.6%
Jun	103.04	131.93	67.99		-48.5%
Jul	98.08	92.86	69.16		-25.5%
25-Jul		89.22	73.75		-17.3%
3-Aug		86.22	76.93		-10.8%
15-Aug		67.24		75.71	12.6%
Aug	88.47	68.58		74.00	7.9%
Sep	68.39	45.07		59.00	30.9%
Oct	70.96	56.49		63.00	11.5%
Nov	78.61	69.13		70.00	1.3%
Dec	64.76	54.74		58.00	6.0%
Jan	86.64	79.25		68.00	-14.2%

SELECT, 114A, 3 SHOULDER CLOD, TRIMMED, 1/4" MAX, USDA

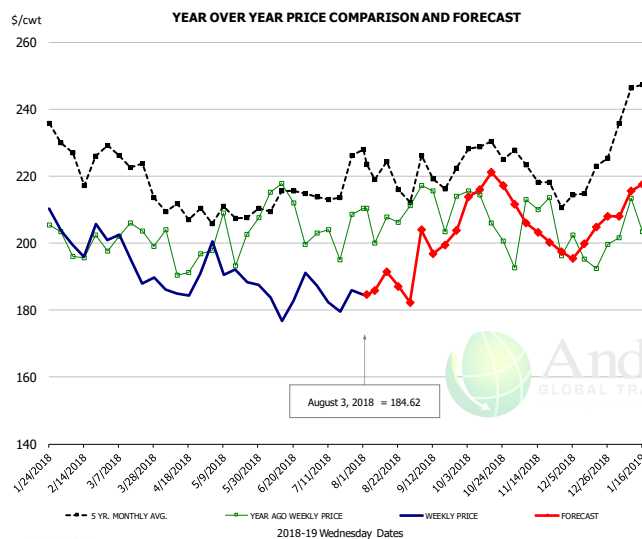


PRICE HISTORY AND FORECAST

- DOLLARS PER CWT -

	5-YR. AVG	YR. AGO	CURRENT	FORECAST	% CH.
Feb	237.50	200.26	223.62		11.7%
Mar	231.12	208.65	220.64		5.7%
Apr	221.00	204.47	215.44		5.4%
May	229.08	228.70	228.53		-0.1%
Jun	230.94	228.26	207.81		-9.0%
Jul	230.65	210.01	210.05		0.0%
25-Jul		211.65	209.49		-1.0%
3-Aug		213.65	218.33		2.2%
15-Aug		202.56		218.91	8.1%
Aug	227.46	205.70		218.00	6.0%
Sep	228.17	214.79		220.00	2.4%
Oct	225.48	201.06		226.00	12.4%
Nov	219.76	203.08		213.00	4.9%
Dec	221.20	207.09		213.00	2.9%
Jan	253.20	217.87		231.00	6.0%

SELECT, 170 GOOSENECK ROUND, 18-33, USDA

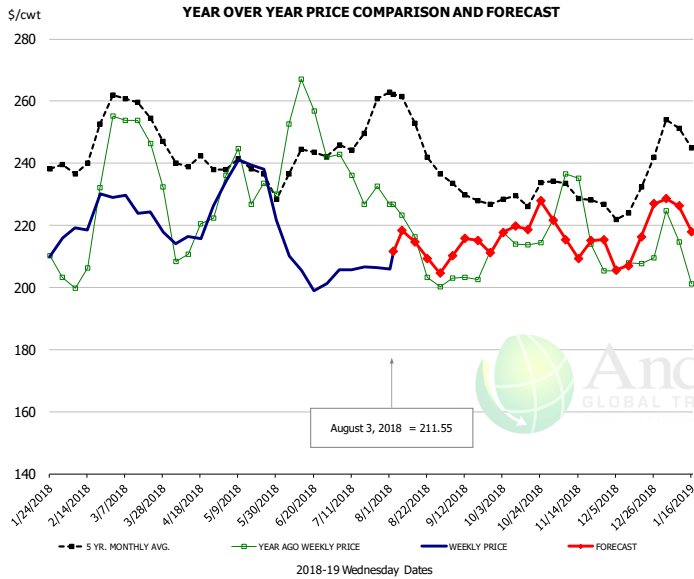


PRICE HISTORY AND FORECAST

- DOLLARS PER CWT -

	5-YR. AVG	YR. AGO	CURRENT	FORECAST	% CH.
Feb	221.47	194.76	199.05		2.2%
Mar	218.70	200.86	190.19		-5.3%
Apr	206.61	192.05	186.92		-2.7%
May	205.76	200.80	191.75		-4.5%
Jun	207.35	206.07	182.70		-11.3%
Jul	211.34	195.62	184.23		-5.8%
25-Jul		208.52	185.94		-10.8%
3-Aug		210.41	184.62		-12.3%
15-Aug		207.86		191.45	-7.9%
Aug	217.67	198.93		188.00	-5.5%
Sep	214.52	204.72		201.00	-1.8%
Oct	224.19	204.96		217.00	5.9%
Nov	216.22	197.00		204.00	3.6%
Dec	213.43	196.95		202.00	2.6%
Jan	236.21	204.92		212.00	3.5%

CHOICE, 168, 3 TOP INSIDE ROUND, 1/4" MAX, USDA

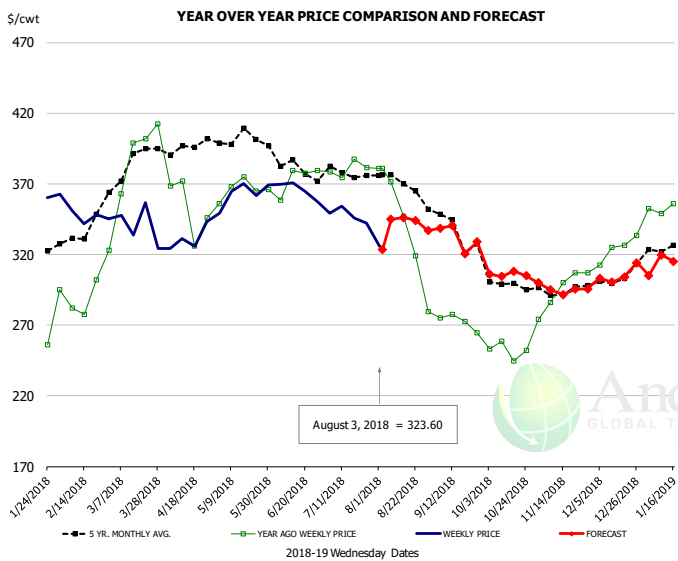


PRICE HISTORY AND FORECAST

- DOLLARS PER CWT -

	5-YR. AVG	YR. AGO	CURRENT	FORECAST	% CH.
Feb	242.05	216.10	221.96		2.7%
Mar	255.24	242.49	223.30		-7.9%
Apr	238.70	214.51	217.21		1.3%
May	236.66	231.79	232.51		0.3%
Jun	236.13	250.42	205.83		-17.8%
Jul	245.42	232.10	204.79		-11.8%
25-Jul		232.64	206.32		-11.3%
3-Aug		226.72	211.55		-6.7%
15-Aug		216.25		214.74	-0.7%
Aug	250.20	210.80		213.00	1.0%
Sep	229.40	204.34		215.00	5.2%
Oct	228.65	215.92		221.00	2.4%
Nov	227.96	217.04		215.00	-0.9%
Dec	226.84	206.45		214.00	3.7%
Jan	245.29	212.85		222.00	4.3%

CHOICE, 184, 3 TOP BUTT, BONELESS, USDA

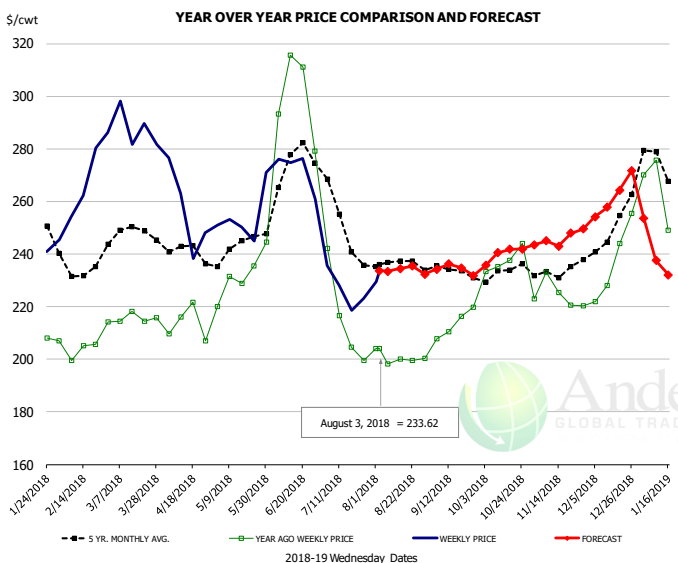


PRICE HISTORY AND FORECAST

- DOLLARS PER CWT -

	5-YR. AVG	YR. AGO	CURRENT	FORECAST	% CH.
Feb	329.27	291.00	345.29		18.7%
Mar	381.86	380.54	339.84		-10.7%
Apr	391.19	358.69	332.58		-7.3%
May	399.55	365.43	363.43		-0.5%
Jun	379.60	367.27	364.50		-0.8%
Jul	375.44	378.05	346.97		-8.2%
25-Jul		381.34	342.14		-10.3%
3-Aug		381.05	323.60		-15.1%
15-Aug		346.86		346.20	-0.2%
Aug	363.83	333.81		340.00	1.9%
Sep	336.94	271.78		335.00	23.3%
Oct	298.54	254.23		305.00	20.0%
Nov	293.70	294.73		295.00	0.1%
Dec	297.56	320.99		300.00	-6.5%
Jan	322.31	349.59		305.00	-12.8%

CHOICE, 120, 1 BRISKET, DECKLE-OFF, BONELESS, USDA

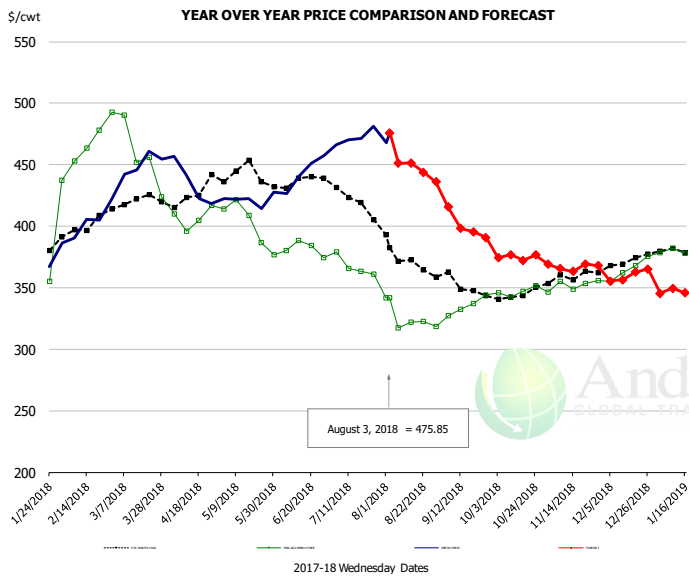


PRICE HISTORY AND FORECAST

- DOLLARS PER CWT -

	5-YR. AVG	YR. AGO	CURRENT	FORECAST	% CH.
Feb	232.37	204.57	266.48		30.3%
Mar	243.58	211.62	285.22		34.8%
Apr	238.91	210.28	252.48		20.1%
May	241.61	232.08	252.85		8.9%
Jun	267.47	290.22	272.48		-6.1%
Jul	244.87	210.89	228.19		8.2%
25-Jul		199.64	223.13		11.8%
3-Aug		204.06	233.62		14.5%
15-Aug		199.94		234.46	17.3%
Aug	234.93	199.86		233.00	16.6%
Sep	233.04	210.80		235.00	11.5%
Oct	232.22	235.53		240.00	1.9%
Nov	231.25	223.71		246.00	10.0%
Dec	246.17	234.17		262.00	11.9%
Jan	264.01	251.79		252.00	0.1%

Inside Skirt, USDA



PRICE HISTORY AND FORECAST

- DOLLARS PER CWT -

	5-YR. AVG	YR. AGO	CURRENT	FORECAST	% CH.
Feb	395.76	459.40	402.54		-12.4%
Mar	417.87	461.72	452.26		-2.0%
Apr	422.41	408.95	426.68		4.3%
May	434.48	395.52	413.51		4.5%
Jun	432.50	378.23	438.10		15.8%
Jul	418.45	367.65	470.53		28.0%
25-Jul		361.20	481.44		33.3%
3-Aug		341.58	475.85		39.3%
15-Aug		322.16		451.47	40.1%
Aug	372.47	325.53		450.00	38.2%
Sep	349.59	333.12		400.00	20.1%
Oct	344.45	347.76		375.00	7.8%
Nov	356.44	352.71		365.00	3.5%
Dec	368.77	365.62		360.00	-1.5%
Jan	379.78	376.90		348.00	-7.7%



Broiler Market - Supply Situation & Outlook

Weekly Broiler Production Statistics

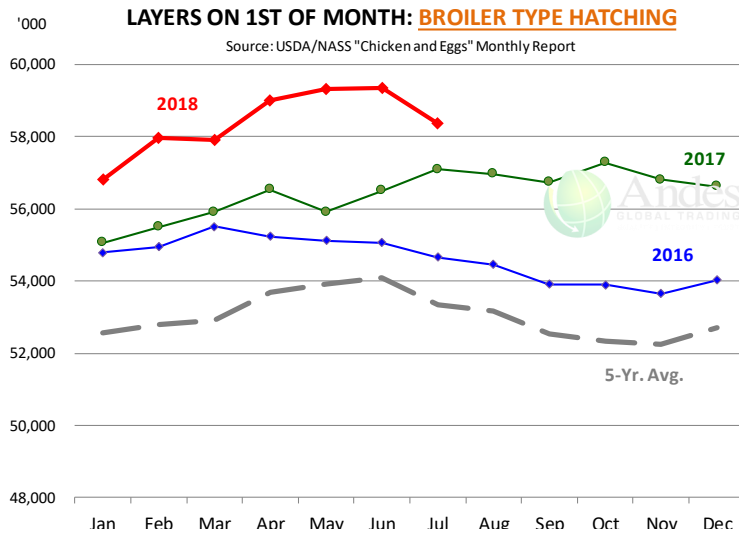
Source: USDA

		Slaughter (million hd)	% CH.	Dressed Wt LBS	% CH.	Production RTC (Million lbs)	% CH.
Year Ago	29-Jul-17	165.3		4.62		763.8	
Last Week	28-Jul-18	166.2	0.5%	4.69	1.5%	779.2	2.0%
Prev. Week	21-Jul-18	164.4		4.65		764.5	
Last Week	28-Jul-18	166.2	1.1%	4.69	0.8%	779.2	1.9%
YTD Last Year	29-Jul-17	4,829		4.65		22,461	
YTD This Year	28-Jul-18	4,803	-0.5%	4.68	0.7%	22,489	0.1%

Quarterly History + Forecasts

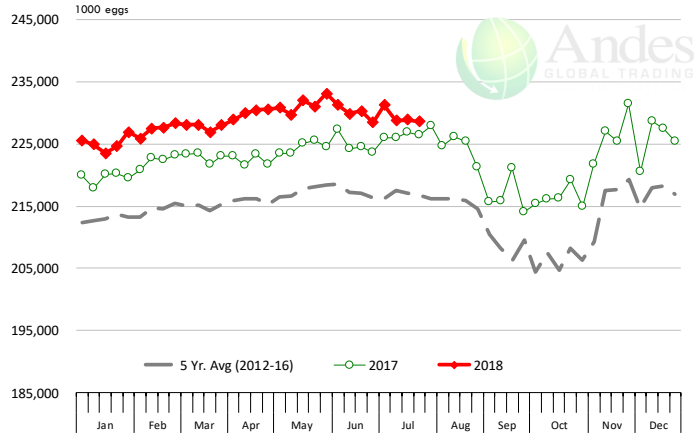
Q1 2016	2,160		4.65		10,039	
Q2 2016	2,207		4.65		10,253	
Q3 2016	2,248		4.60		10,338	
Q4 2016	2,154		4.67		10,065	
Annual	8,768	Y/Y % CH.	4.64	Y/Y % CH.	40,696	Y/Y % CH.
Q1 2017	2,201	1.9%	4.65	0.0%	10,233	1.9%
Q2 2017	2,236	1.3%	4.65	0.2%	10,407	1.5%
Q3 2017	2,264	0.7%	4.66	1.3%	10,551	2.1%
Q4 2017	2,216	2.9%	4.73	1.1%	10,472	4.0%
Annual	8,916	1.7%	4.67	0.7%	41,662	2.4%
Q1 2018	2,209	0.4%	4.70	1.1%	10,385	1.5%
Q2 2018	2,263	1.2%	4.70	1.0%	10,635	2.2%
Q3 2018	2,298	1.5%	4.70	0.8%	10,800	2.4%
Q4 2018	2,260	2.0%	4.75	0.5%	10,736	2.5%
Annual	9,029	1.3%	4.71	0.9%	42,555	2.1%





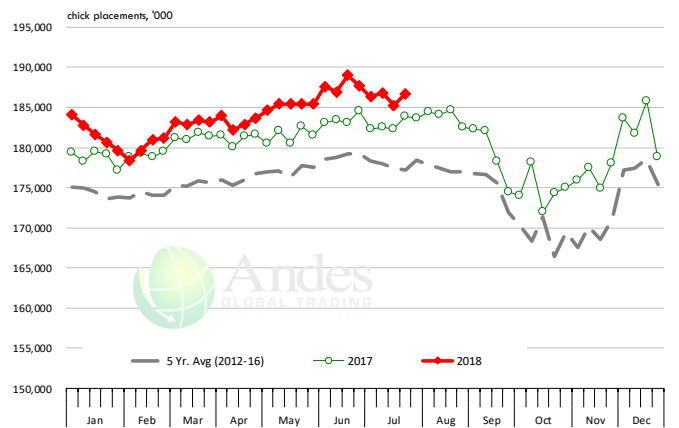
US WEEKLY BROILER EGG SETS

Source: USDA Broiler Hatchery Report

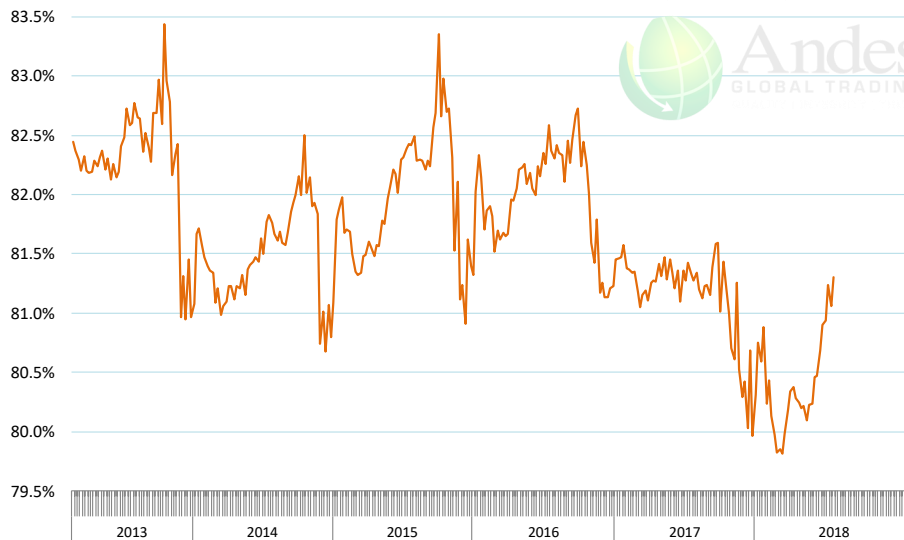


US WEEKLY BROILER CHICK PLACEMENT

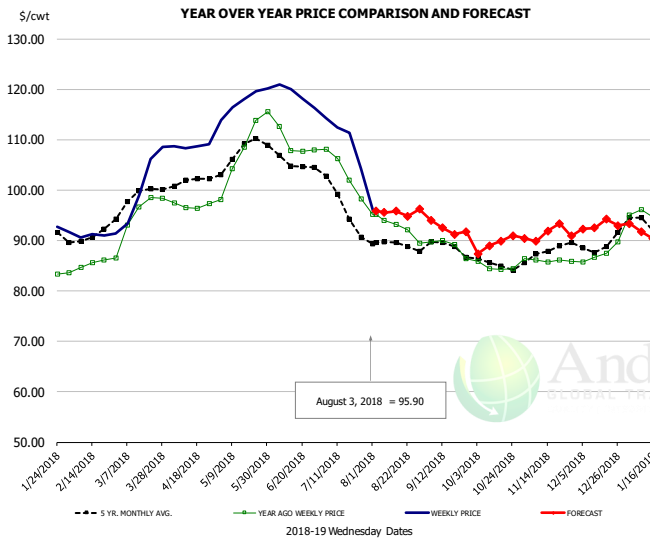
Source: USDA Broiler Hatchery Report



RATIO OF CHICK PLACEMENTS VS. EGG SETS (21 DAY LAG)



BROILER, NATIONAL WHOLE BIRD PRICE, USDA

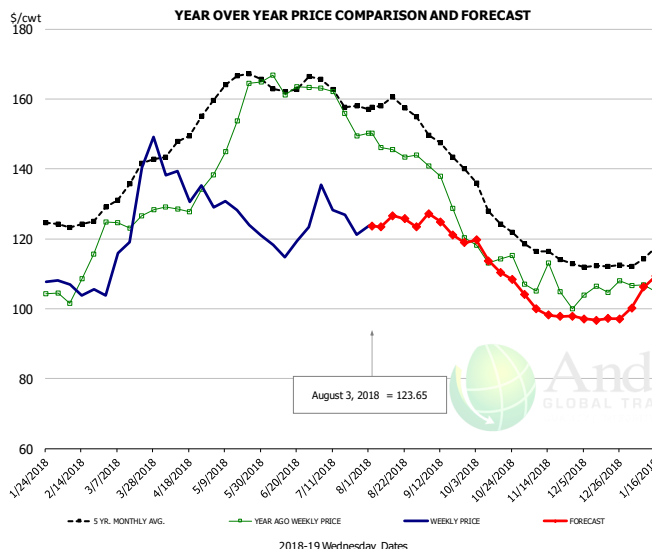


PRICE HISTORY AND FORECAST

- DOLLARS PER CWT -

	5-YR. AVG	YR. AGO	CURRENT	FORECAST	% CH.
Feb	90.60	85.01	91.07		7.1%
Mar	98.32	94.65	101.78		7.5%
Apr	101.48	96.90	108.72		12.2%
May	107.33	108.05	117.62		8.9%
Jun	105.79	109.03	118.89		9.0%
Jul	97.86	103.65	110.64		6.8%
25-Jul		98.24	104.37		6.2%
3-Aug		95.24	95.90		0.7%
15-Aug		93.14		95.80	2.9%
Aug	89.17	92.80		95.00	2.4%
Sep	88.30	88.83		93.00	4.7%
Oct	85.46	84.73		89.00	5.0%
Nov	87.66	86.06		91.00	5.7%
Dec	89.25	87.40		93.00	6.4%
Jan	92.67	94.02		93.00	-1.1%

N.E. BROILER BREAST BONELESS-SKINLESS, USDA

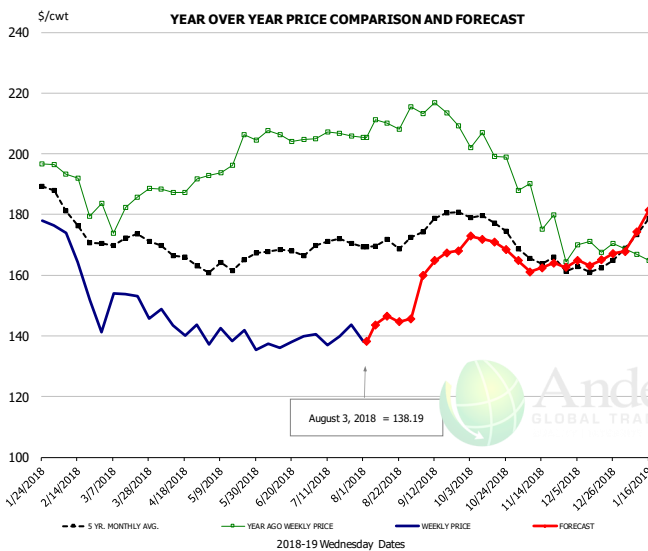


PRICE HISTORY AND FORECAST

- DOLLARS PER CWT -

	5-YR. AVG	YR. AGO	CURRENT	FORECAST	% CH.
Feb	124.10	107.51	104.99		-2.3%
Mar	134.75	125.46	131.08		4.5%
Apr	146.82	129.87	135.81		4.6%
May	164.34	153.28	126.53		-17.4%
Jun	164.02	163.75	118.94		-27.4%
Jul	161.65	157.63	127.90		-18.9%
25-Jul		149.50	121.15		-19.0%
3-Aug		150.10	123.65		-17.6%
15-Aug		145.47		126.64	-12.9%
Aug	158.31	145.75		124.00	-14.9%
Sep	146.16	131.91		123.00	-6.8%
Oct	128.99	115.16		113.00	-1.9%
Nov	115.89	106.01		99.00	-6.6%
Dec	112.61	105.72		97.00	-8.2%
Jan	115.74	106.78		103.00	-3.5%

N.E. BROILER WINGS, USDA, WT. AVG.

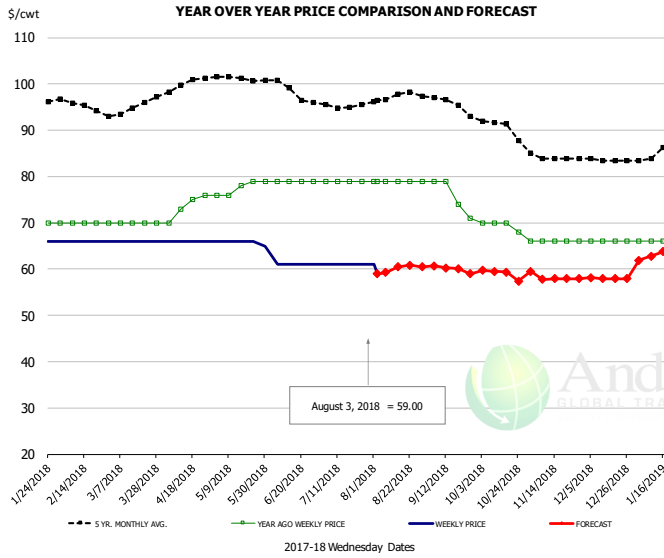


PRICE HISTORY AND FORECAST

- DOLLARS PER CWT -

	5-YR. AVG	YR. AGO	CURRENT	FORECAST	% CH.
Feb	179.03	190.28	157.83		-17.1%
Mar	171.89	182.84	151.61		-17.1%
Apr	167.69	188.71	143.99		-23.7%
May	163.19	198.74	139.08		-30.2%
Jun	167.98	205.67	137.79		-33.0%
Jul	169.97	206.21	140.22		-32.0%
25-Jul		205.89	143.57		-30.3%
3-Aug		205.37	138.19		-32.7%
15-Aug		210.16		146.56	-30.3%
Aug	170.44	210.05		145.00	-31.0%
Sep	177.35	213.14		165.00	-22.6%
Oct	177.83	201.73		171.00	-15.2%
Nov	165.12	179.46		163.00	-9.2%
Dec	162.68	169.80		165.00	-2.8%
Jan	175.72	170.93		176.00	3.0%

NE BONELESS BREAST BROILER WHITE TRIM MEAT, UNDER 15%, FRESH

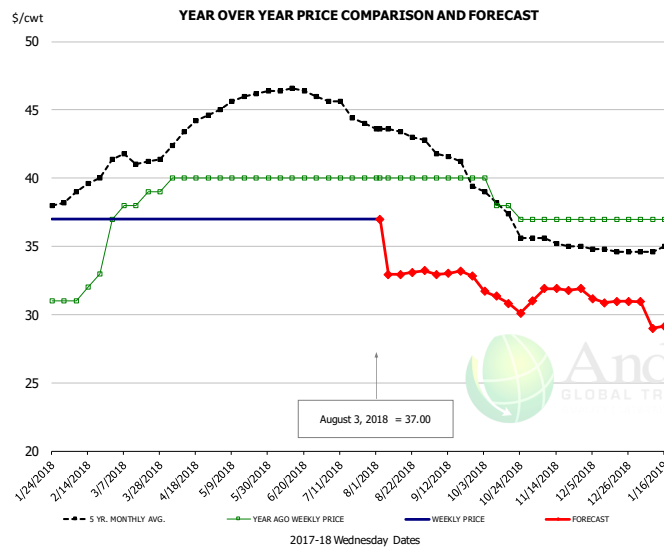


PRICE HISTORY AND FORECAST

- DOLLARS PER CWT -

	5-YR. AVG	YR. AGO	CURRENT	FORECAST	% CH.
Feb	95.55	70.00	66.00		-5.7%
Mar	94.30	70.00	66.00		-5.7%
Apr	99.52	73.50	66.00		-10.2%
May	101.18	77.60	65.80		-15.2%
Jun	99.30	79.00	61.00		-22.8%
Jul	95.47	79.00	61.00		-22.8%
25-Jul		79.00	61.00		-22.8%
3-Aug		79.00	59.00		-25.3%
15-Aug		79.00		60.49	-23.4%
Aug	97.40	79.00		60.00	-24.1%
Sep	95.97	75.75		60.00	-20.8%
Oct	90.92	69.50		59.00	-15.1%
Nov	84.10	66.00		58.00	-12.1%
Dec	83.56	66.00		58.00	-12.1%
Jan	85.16	66.00		63.00	-4.5%

UB CHICKEN - NE DRUMSTICKS, (BULK)

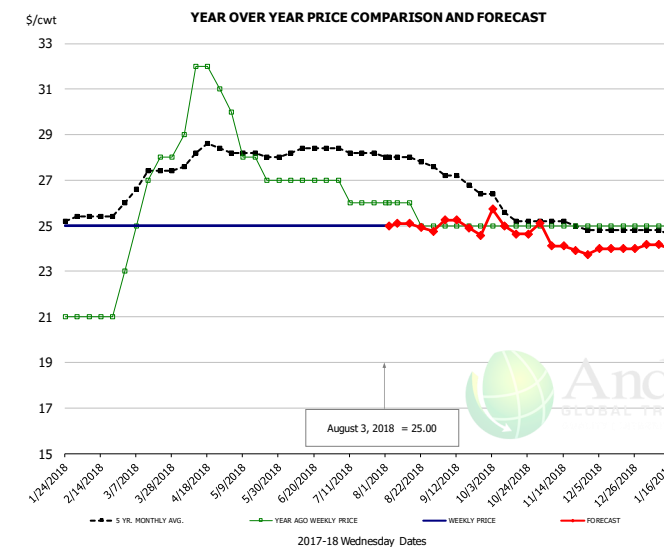


PRICE HISTORY AND FORECAST

- DOLLARS PER CWT -

	5-YR. AVG	YR. AGO	CURRENT	FORECAST	% CH.
Feb	39.20	31.75	37.00		16.5%
Mar	41.43	38.20	37.00		-3.1%
Apr	43.28	40.00	37.00		-7.5%
May	45.70	40.00	37.00		-7.5%
Jun	46.45	40.00	37.00		-7.5%
Jul	45.06	40.00	37.00		-7.5%
25-Jul		40.00	37.00		-7.5%
3-Aug		40.00	37.00		-7.5%
15-Aug		40.00		32.93	-17.7%
Aug	43.37	40.00		33.00	-17.5%
Sep	41.70	40.00		33.00	-17.5%
Oct	37.79	38.25		31.00	-19.0%
Nov	35.35	37.00		32.00	-13.5%
Dec	34.76	37.00		31.00	-16.2%
Jan	34.83	37.00		31.00	-16.2%

MECHANICALLY SEPARATED CHICKEN-FRESH-15-20% FAT W/SKN

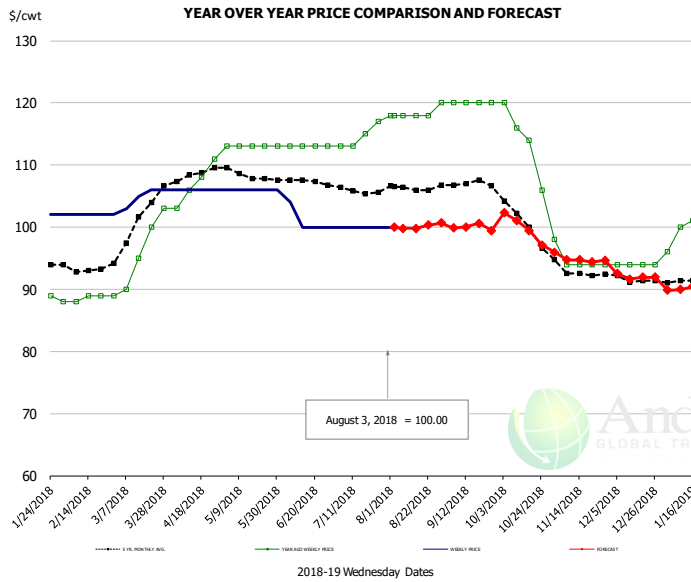


PRICE HISTORY AND FORECAST

- DOLLARS PER CWT -

	5-YR. AVG	YR. AGO	CURRENT	FORECAST	% CH.
Feb	25.40	21.00	25.00		19.0%
Mar	26.91	26.20	25.00		-4.6%
Apr	28.10	31.00	25.00		-19.4%
May	28.10	28.00	25.00		-10.7%
Jun	28.25	27.00	25.00		-7.4%
Jul	28.25	26.25	25.00		-4.8%
25-Jul		26.00	25.00		-3.8%
3-Aug		26.00	25.00		-3.8%
15-Aug		26.00		25.11	-3.4%
Aug	27.92	25.60		25.00	-2.3%
Sep	27.17	25.00		25.00	0.0%
Oct	25.73	25.00		25.00	0.0%
Nov	25.15	25.00		24.00	-4.0%
Dec	24.80	25.00		24.00	-4.0%
Jan	24.70	25.00		24.00	-4.0%

UB NE Whole Leg Meat 4/10's

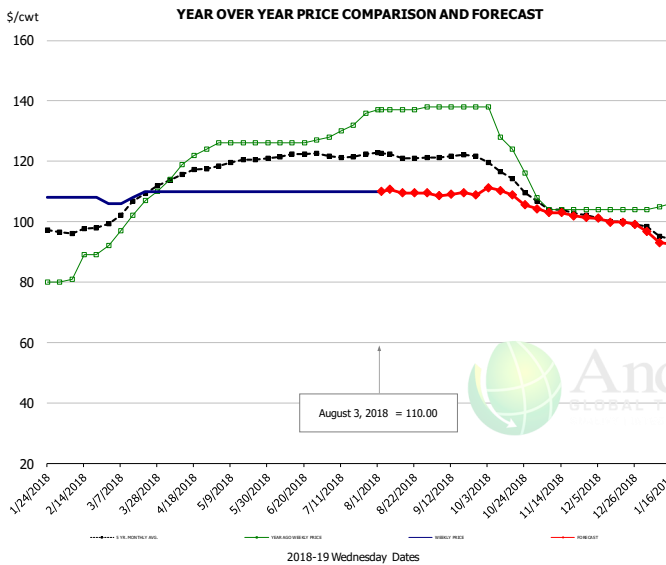


PRICE HISTORY AND FORECAST

- DOLLARS PER CWT -

	5-YR. AVG	YR. AGO	CURRENT	FORECAST	% CH.
Feb	93.25	88.50	102.00		15.3%
Mar	100.11	95.40	105.00		10.1%
Apr	108.32	107.00	106.00		-0.9%
May	108.45	113.00	106.00		-6.2%
Jun	107.66	113.00	101.00		-10.6%
Jul	106.13	114.50	100.00		-12.7%
25-Jul		117.00	100.00		-14.5%
3-Aug		118.00	100.00		-15.3%
15-Aug		118.00		99.79	-15.4%
Aug	106.46	118.40		100.00	-15.5%
Sep	107.09	120.00		100.00	-16.7%
Oct	101.46	114.00		100.00	-12.3%
Nov	92.91	94.80		95.00	0.2%
Dec	91.46	94.00		92.00	-2.1%
Jan	91.02	100.20		90.00	-10.2%

UB NE Boneless/Skinless Thigh Meat, Special Trim

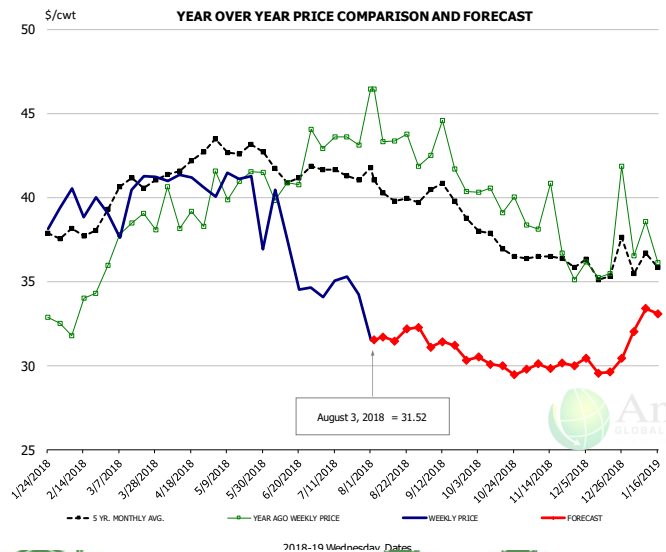


PRICE HISTORY AND FORECAST

- DOLLARS PER CWT -

	5-YR. AVG	YR. AGO	CURRENT	FORECAST	% CH.
Feb	97.10	84.75	107.50		26.8%
Mar	105.43	101.60	108.50		6.8%
Apr	115.64	119.75	110.00		-8.1%
May	119.45	126.00	110.00		-12.7%
Jun	121.95	126.25	110.00		-12.9%
Jul	122.05	131.50	110.00		-16.3%
25-Jul		136.00	110.00		-19.1%
3-Aug		137.00	110.00		-19.7%
15-Aug		137.00		109.45	-20.1%
Aug	121.91	137.20		110.00	-19.8%
Sep	121.64	138.00		109.00	-21.0%
Oct	115.64	126.50		109.00	-13.8%
Nov	103.98	104.80		103.00	-1.7%
Dec	100.14	104.00		100.00	-3.8%
Jan	95.26	106.20		95.00	-10.5%

N.E. BROILER LEG QUARTERS, USDA



PRICE HISTORY AND FORECAST

- DOLLARS PER CWT -

	5-YR. AVG	YR. AGO	CURRENT	FORECAST	% CH.
Feb	37.85	33.14	39.60		19.5%
Mar	40.50	37.87	40.13		6.0%
Apr	41.86	39.06	41.03		5.0%
May	43.03	41.08	40.16		-2.2%
Jun	41.66	41.38	36.81		-11.0%
Jul	41.50	43.31	34.65		-20.0%
25-Jul		43.13	34.24		-20.6%
3-Aug		46.45	31.52		-32.1%
15-Aug		43.36		31.45	-27.5%
Aug	40.36	43.75		32.00	-26.9%
Sep	40.10	42.28		31.00	-26.7%
Oct	37.53	39.99		30.00	-25.0%
Nov	36.26	37.83		30.00	-20.7%
Dec	36.06	37.17		30.00	-19.3%
Jan	35.92	37.74		32.00	-15.2%

Turkey Market - Supply Situation & Outlook

Weekly Turkey Production Statistics

Source: USDA

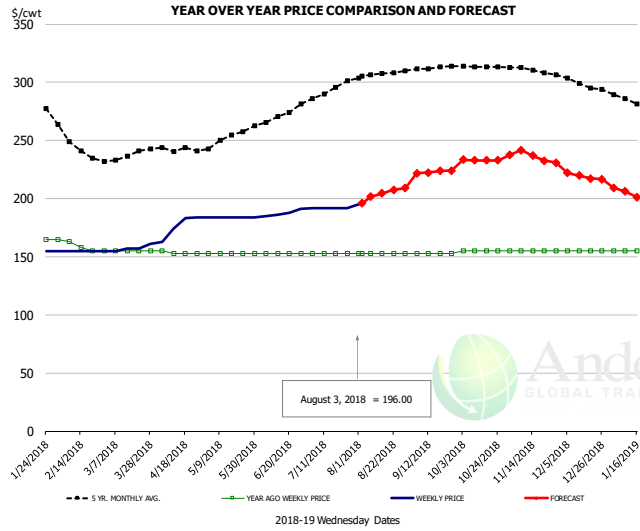
		Slaughter (million hd)	% CH.	Dressed Wt LBS	% CH.	Production RTC (Million lbs)	% CH.
Year Ago	29-Jul-17	4.197		24.57		103.1	
Last Week	28-Jul-18	4.476	6.6%	24.19	-1.5%	108.3	5.0%
Prev. Week	21-Jul-18	4.332		24.48		106.0	
Last Week	28-Jul-18	4.476	3.3%	24.19	-1.2%	108.3	2.1%
YTD Last Year	29-Jul-17	123.1		25.48		3,136	
YTD This Year	28-Jul-18	123.1	0.0%	25.34	-0.5%	3,119	-0.5%

Quarterly History + Forecasts

Q1 2016	57.1		25.12		1,435	
Q2 2016	61.4		24.74		1,520	
Q3 2016	62.4		24.28		1,515	
Q4 2016	62.3		24.26		1,511	
Annual	243.3	Y/Y % CH.	24.60	Y/Y % CH.	5,981	Y/Y % CH.
Q1 2017	58.7	2.8%	25.33	0.9%	1,488	3.7%
Q2 2017	59.6	-3.1%	24.87	0.5%	1,482	-2.5%
Q3 2017	60.4	-3.2%	24.49	0.9%	1,479	-2.4%
Q4 2017	63.0	1.1%	24.33	0.3%	1,533	1.4%
Annual	241.7	-0.6%	24.76	0.6%	5,981	0.0%
Q1 2018	57.0	-2.9%	25.46	0.5%	1,452	-2.4%
Q2 2018	58.7	-1.5%	25.05	0.7%	1,470	-0.8%
Q3 2018	59.7	-1.2%	24.70	0.9%	1,474	-0.3%
Q4 2018	62.3	-1.1%	24.55	0.9%	1,530	-0.2%
Annual	237.6	-1.7%	24.94	0.7%	5,924	-0.9%



UB BONELESS-SKINLESS TURKEY BREAST, TOM, FRESH

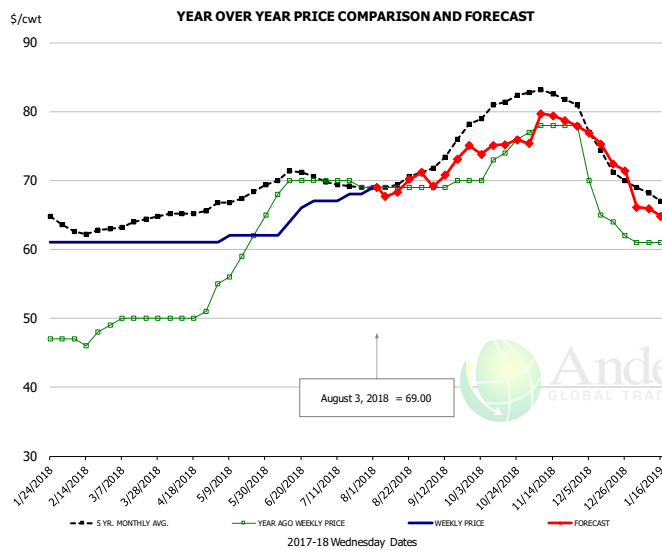


PRICE HISTORY AND FORECAST

- DOLLARS PER CWT -

	5-YR. AVG	YR. AGO	CURRENT	FORECAST	% CH.
Feb	247.05	160.25	155.00		-3.3%
Mar	234.65	155.00	157.50		1.6%
Apr	240.44	153.50	176.00		14.7%
May	251.25	153.00	184.00		20.3%
Jun	268.20	153.00	187.50		22.5%
Jul	290.96	153.00	192.00		25.5%
25-Jul		153.00	192.00		25.5%
3-Aug		153.00	196.00		28.1%
15-Aug		153.00		204.33	33.6%
Aug	306.55	153.00		204.00	33.3%
Sep	311.80	153.00		223.00	45.8%
Oct	313.89	155.00		233.00	50.3%
Nov	310.34	155.00		237.00	52.9%
Dec	299.00	155.00		219.00	41.3%
Jan	281.95	155.00		203.00	31.0%

UB DRUMS, EAST, TOM, FROZEN

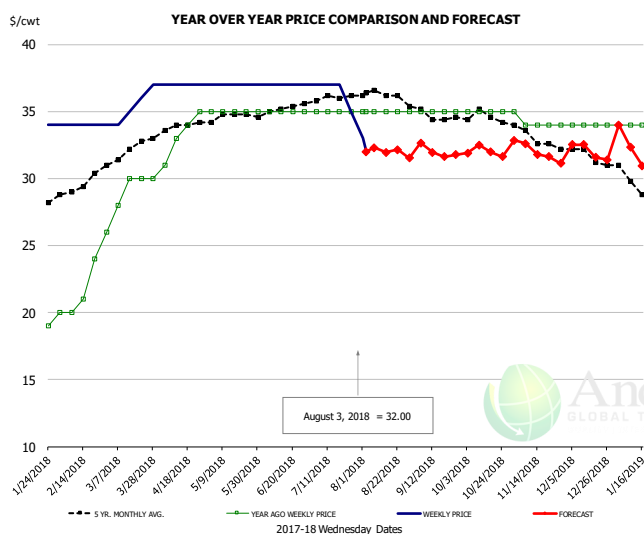


PRICE HISTORY AND FORECAST

- DOLLARS PER CWT -

	5-YR. AVG	YR. AGO	CURRENT	FORECAST	% CH.
Feb	62.80	47.00	61.00		29.8%
Mar	63.70	49.80	61.00		22.5%
Apr	65.33	50.25	61.00		21.4%
May	67.56	59.40	61.80		4.0%
Jun	70.44	69.50	64.75		-6.8%
Jul	69.35	69.75	67.50		-3.2%
25-Jul		69.00	68.00		-1.4%
3-Aug		69.00	69.00		0.0%
15-Aug		69.00		68.33	-1.0%
Aug	69.81	69.00		69.00	0.0%
Sep	73.55	69.50		72.00	3.6%
Oct	80.55	73.25		75.00	2.4%
Nov	82.65	77.80		79.00	1.5%
Dec	74.18	65.25		74.00	13.4%
Jan	67.30	61.00		65.00	6.6%

MECH. SEP. TURKEY-FRESH-UNDER 20% FAT, SOME SKIN

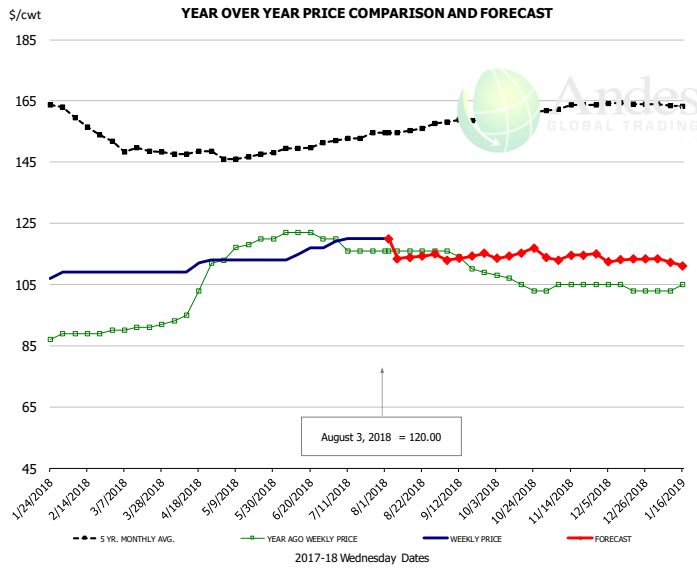


PRICE HISTORY AND FORECAST

- DOLLARS PER CWT -

	5-YR. AVG	YR. AGO	CURRENT	FORECAST	% CH.
Feb	29.40	21.25	34.00		60.0%
Mar	31.99	28.80	35.50		23.3%
Apr	33.86	33.25	37.00		11.3%
May	34.65	35.00	37.00		5.7%
Jun	35.05	35.00	37.00		5.7%
Jul	35.96	35.00	36.50		4.3%
25-Jul		35.00	35.00		0.0%
3-Aug		35.00	32.00		-8.6%
15-Aug		35.00		31.96	-8.7%
Aug	36.33	35.00		32.00	-8.6%
Sep	34.80	35.00		32.00	-8.6%
Oct	34.53	35.00		32.00	-8.6%
Nov	33.19	34.20		32.00	-6.4%
Dec	31.76	34.00		32.00	-5.9%
Jan	29.55	34.00		32.00	-5.9%

TURKEY MEAT - SCAPULA, FROZEN

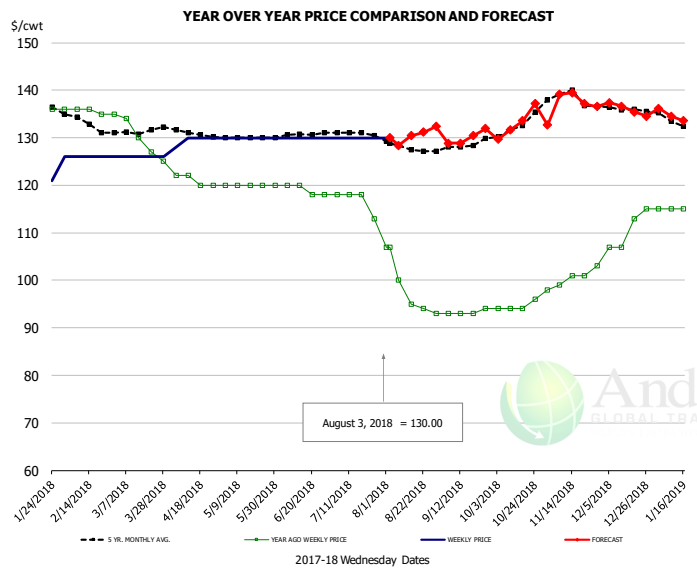


PRICE HISTORY AND FORECAST

- DOLLARS PER CWT -

	5-YR. AVG	YR. AGO	CURRENT	FORECAST	% CH.
Feb	158.20	89.00	109.00		22.5%
Mar	148.76	90.80	109.00		20.0%
Apr	147.41	100.75	110.75		9.9%
May	146.58	117.60	113.00		-3.9%
Jun	148.98	121.50	115.50		-4.9%
Jul	152.57	117.00	119.75		2.4%
25-Jul		116.00	120.00		3.4%
3-Aug		116.00	120.00		3.4%
15-Aug		116.00		113.92	-1.8%
Aug	155.15	116.00		114.00	-1.7%
Sep	158.13	112.25		114.00	1.6%
Oct	160.22	105.75		115.00	8.7%
Nov	163.02	104.60		114.00	9.0%
Dec	164.07	104.00		113.00	8.7%
Jan	163.63	105.40		112.00	6.3%

UB TURKEY MEAT - THIGH, FRESH



PRICE HISTORY AND FORECAST

- DOLLARS PER CWT -

	5-YR. AVG	YR. AGO	CURRENT	FORECAST	% CH.
Feb	133.30	135.75	126.00		-7.2%
Mar	130.89	130.20	126.00		-3.2%
Apr	131.10	121.00	129.50		7.0%
May	130.04	120.00	130.00		8.3%
Jun	130.40	119.00	130.00		9.2%
Jul	130.83	116.75	130.00		11.3%
25-Jul		113.00	130.00		15.0%
3-Aug		107.00	130.00		21.5%
15-Aug		95.00		130.39	37.2%
Aug	127.81	97.80		130.00	32.9%
Sep	128.05	93.25		130.00	39.4%
Oct	132.22	94.50		133.00	40.7%
Nov	138.75	100.40		138.00	37.5%
Dec	136.47	110.50		136.00	23.1%
Jan	133.68	118.40		134.00	13.2%

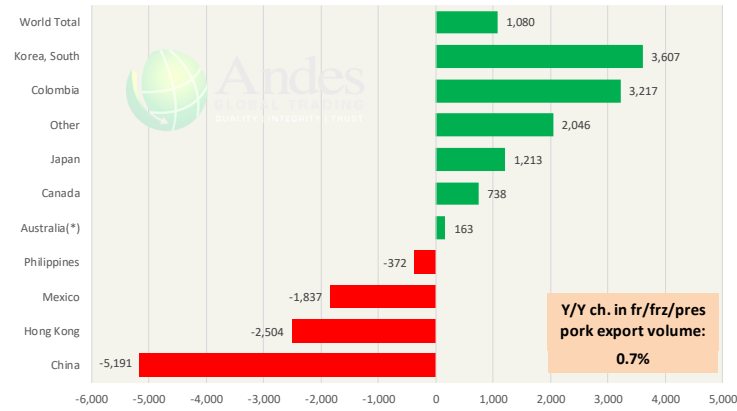


Special Monthly Update - Pork Exports

Y/Y Ch. in Jun. 18 vs. Jun 17 US Fr, Frz & Pres Pork Export Volume

Source: USDA/FAS

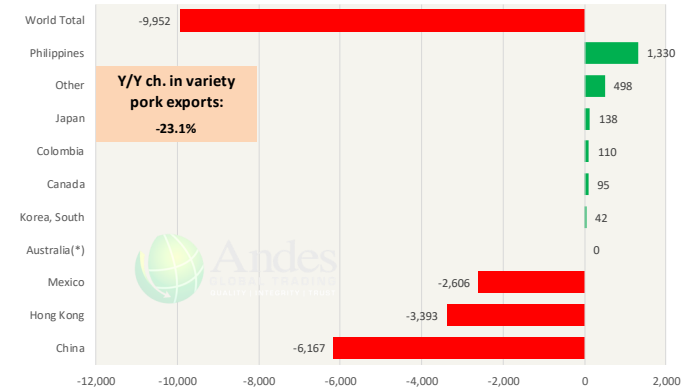
Units: Metric Tons



Y/Y Ch. in Jun. 18 vs. Jun 17 US Pork Variety Meat Exports

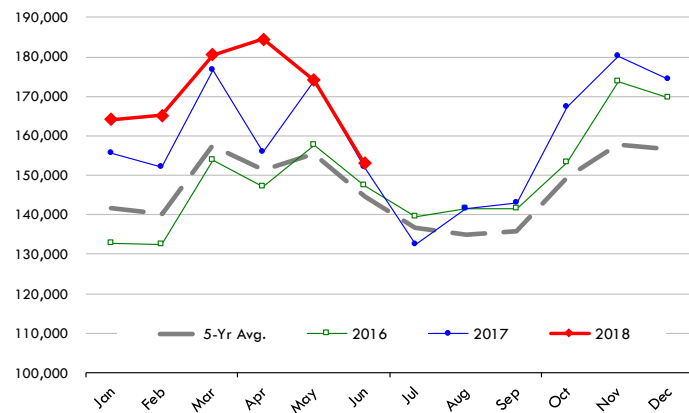
Source: USDA/FAS

Units: Metric Tons



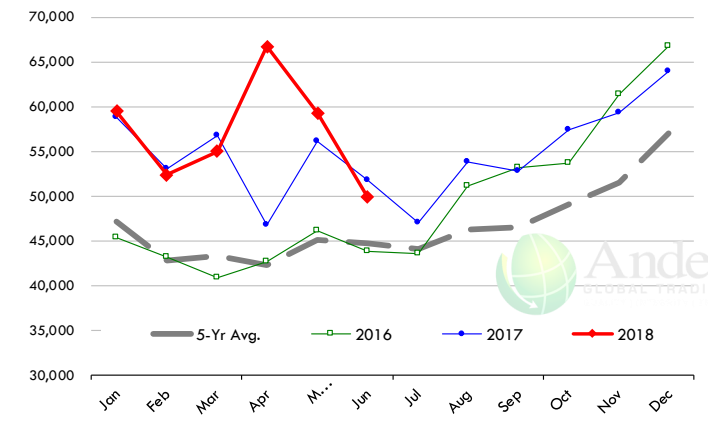
Quantity of US Exports of Fr/Frz/Cooked Pork: World Total

Source: USDA/FAS. Units: Metric Ton. Analysis by: Steiner Consulting (800.526.4612)



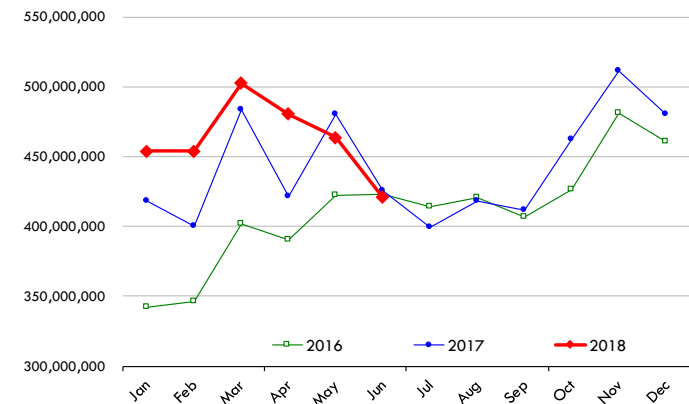
Quantity of US Exports of Fr/Frz/Cooked Pork: Mexico

Source: USDA/FAS. Units: Metric Ton. Analysis by: Steiner Consulting (800.526.4612)



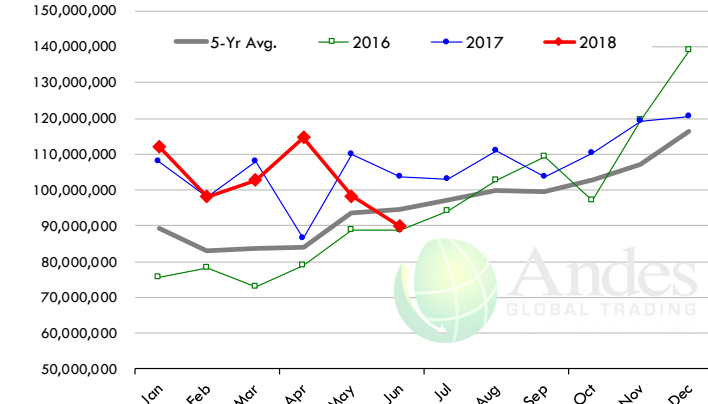
\$ Value of US Exports of Fr/Frz/Cooked Pork: World Total

Source: USDA/FAS. Units: US Dollars. Analysis by: Steiner Consulting (800.526.4612)



\$ Value of US Exports of Fr/Frz/Cooked Pork: Mexico

Source: USDA/FAS. Units: US Dollars. Analysis by: Steiner Consulting (800.526.4612)

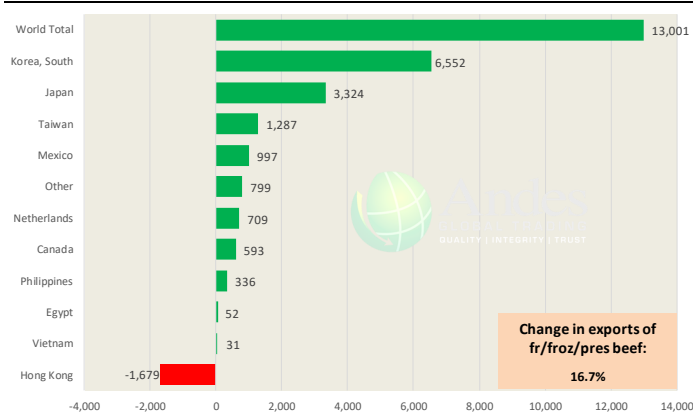


Special Monthly Update - Beef Exports

Y/Y Ch. in Jun. 18 vs. Jun 17 US Beef and Veal Export Volume

Source: USDA/FAS

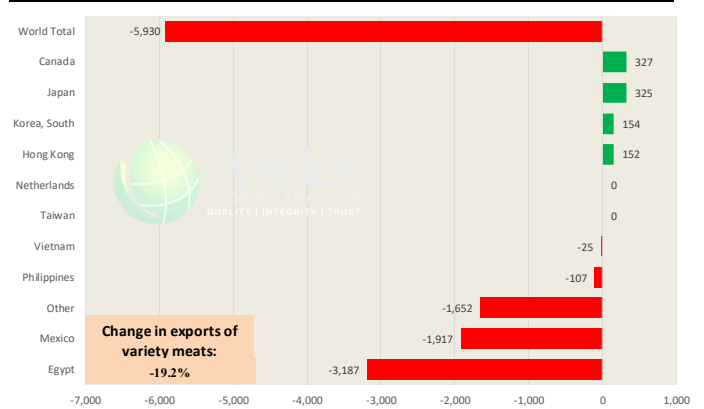
Units: Metric Tons



Y/Y Ch. in Jun. 18 vs. Jun 17 US Beef Variety Meat Exports

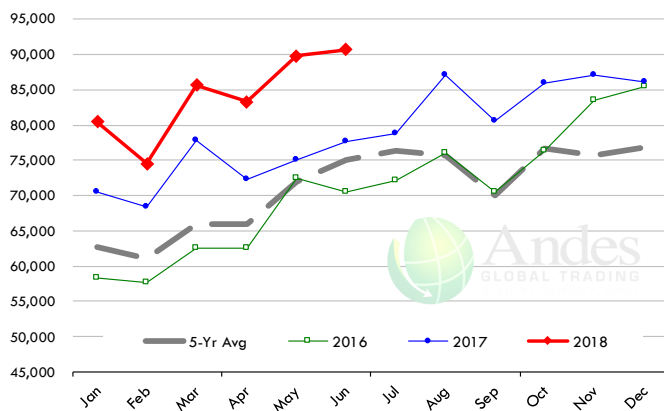
Source: USDA/FAS

Units: Metric Tons



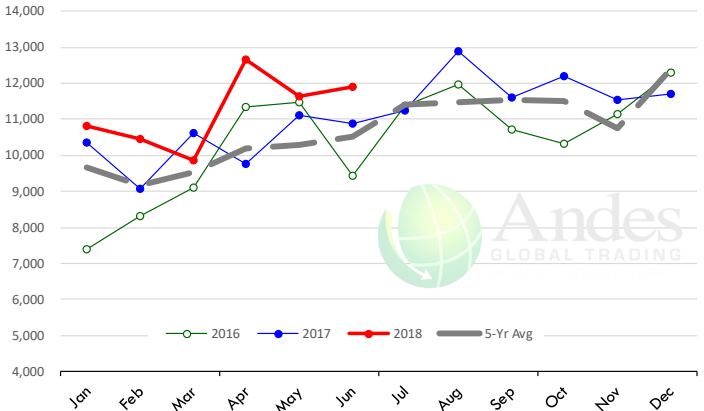
Quantity of US Exports of Fr/Frz/Pres Beef & Veal: World Total

Source: USDA/FAS. Units: Metric Ton. Analysis by: Steiner Consulting (800.526.4612)



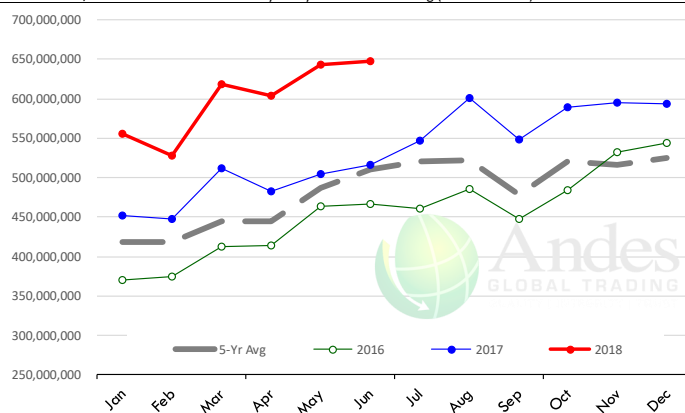
Quantity of US Exports of Fr/Frz/Pres Beef: Mexico

Source: USDA/FAS. Units: Metric Ton. Analysis by: Steiner Consulting (800.526.4612)



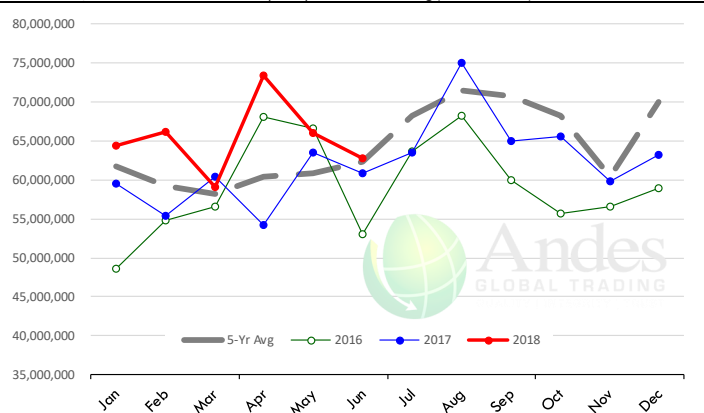
\$ Value of US Exports of Fr/Frz/Pres Beef: World Total

Source: USDA/FAS. Units: US Dollars. Analysis by: Steiner Consulting (800.526.4612)



\$ Value of US Exports of Fr/Frz/Pres Beef: Mexico

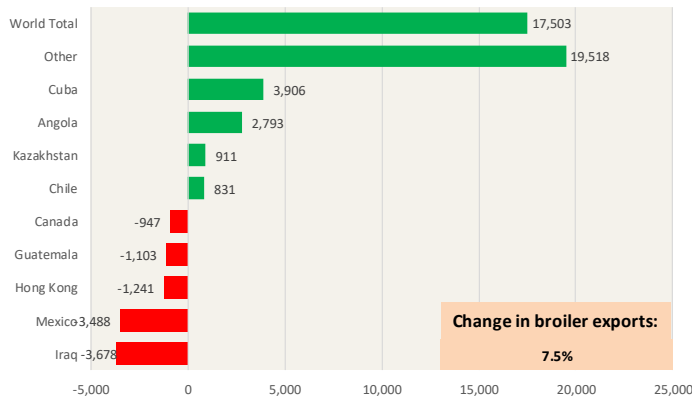
Source: USDA/FAS. Units: US Dollars. Analysis by: Steiner Consulting (800.526.4612)



Special Monthly Update - Chicken Exports

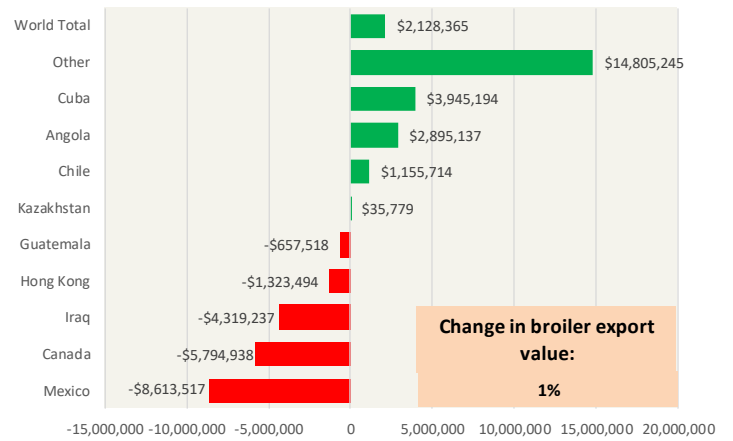
Y/Y Ch. in Jun. 18 vs. Jun 17 US Fresh/Frozen Broiler Meat Exports

Source: USDA/FAS Units: Metric Tons



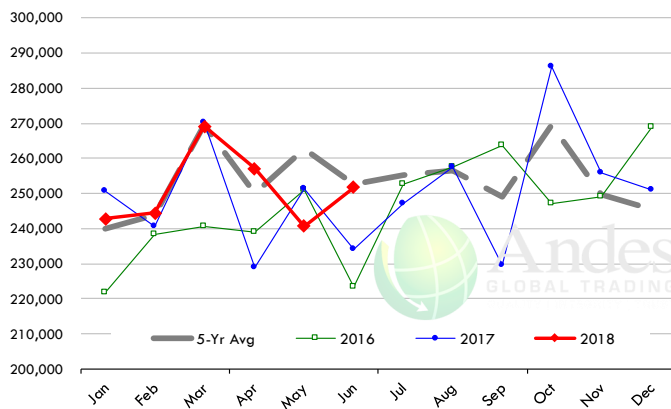
Y/Y Ch. in Jun. 18 vs. Jun 17 US Broiler Export Value (\$)

Source: USDA/FAS Units: US \$



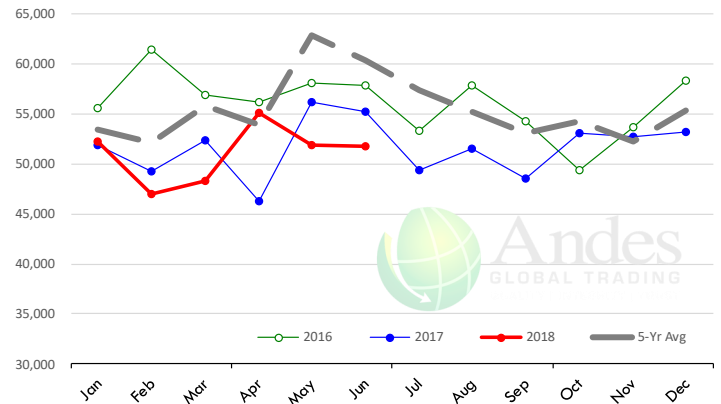
Quantity of US Exports of Fr/Frz Chicken: World Total

Source: USDA/FAS. Units: Metric Ton. Analysis by: Steiner Consulting (800.526.4612)



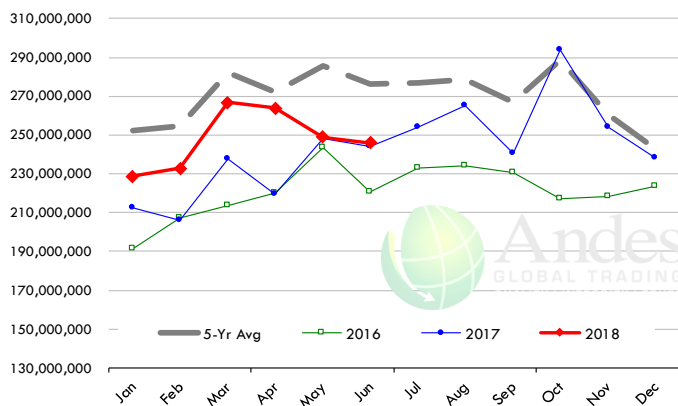
Quantity of US Exports of Fr/Frz Chicken: Mexico

Source: USDA/FAS. Units: Metric Ton. Analysis by: Steiner Consulting (800.526.4612)



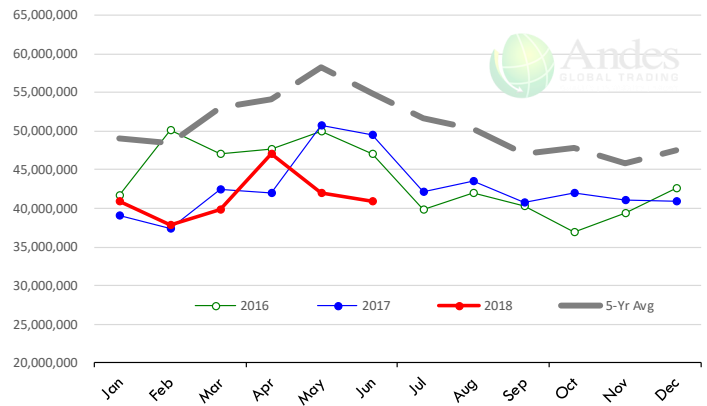
\$ Value of US Exports of Fr/Frz Chicken: World Total

Source: USDA/FAS. Units: US Dollar. Analysis by: Steiner Consulting (800.526.4612)



\$ Value of US Exports of Fr/Frz Chicken: Mexico

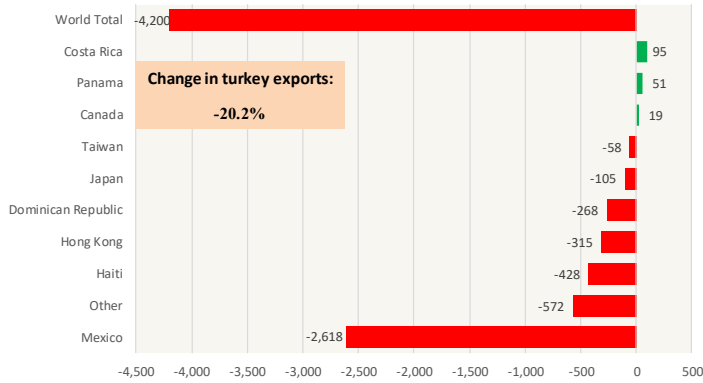
Source: USDA/FAS. Units: US Dollar. Analysis by: Steiner Consulting (800.526.4612)



Special Monthly Update - Turkey Exports

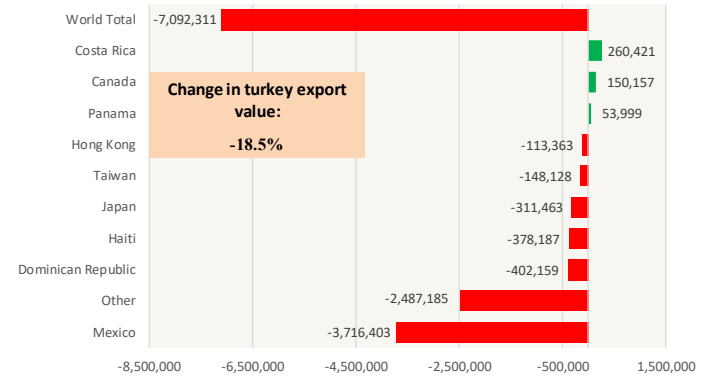
Y/Y Ch. in Jun. 18 vs. Jun 17 US Turkey Exports

Source: USDA/FAS Units: Metric Tons



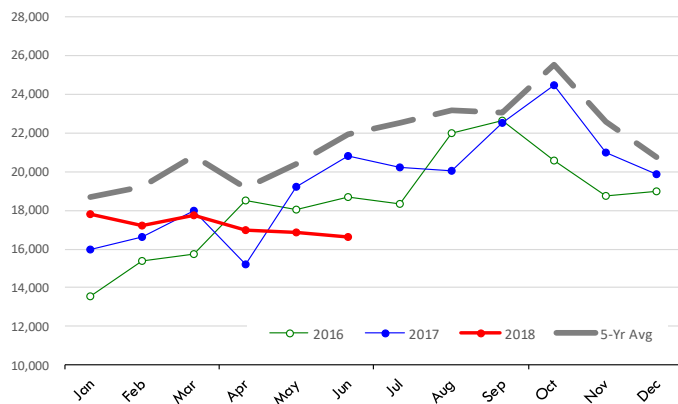
Y/Y Ch. in Jun. 18 vs. Jun 17 US Turkey Export Value (\$)

Source: USDA/FAS Units: US Dollars



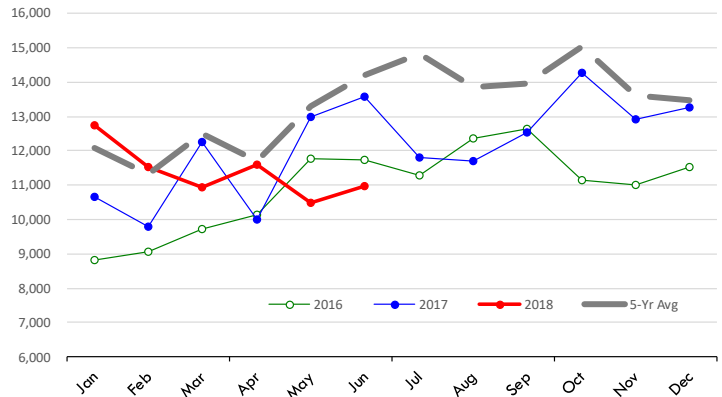
Quantity of US Exports of Fr/Frz Turkey: World Total

Source: USDA/FAS. Units: Metric Ton. Analysis by: Steiner Consulting (800.526.4612)



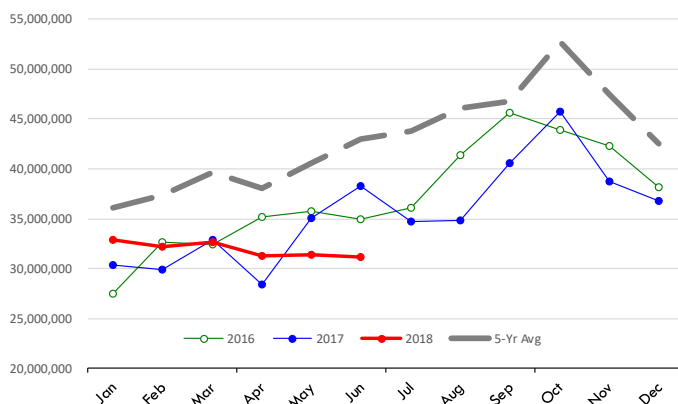
Quantity of US Exports of Fr/Frz Turkey: Mexico

Source: USDA/FAS. Units: Metric Ton. Analysis by: Steiner Consulting (800.526.4612)



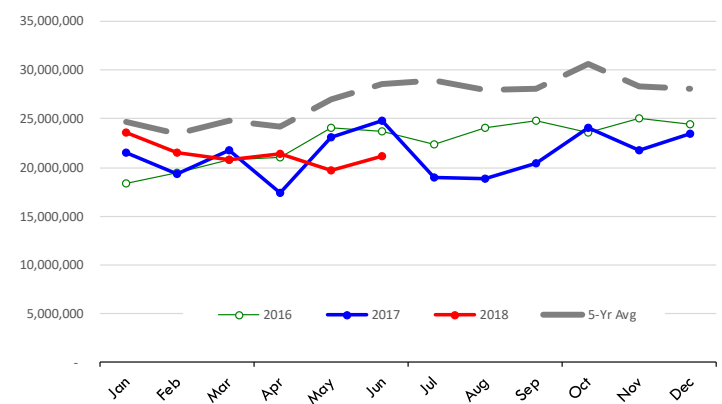
\$ Value of US Exports of Fr/Frz Turkey Export Value: World Total

Source: USDA/FAS. Units: US Dollars. Analysis by: Steiner Consulting (800.526.4612)



\$ Value of US Exports of Fr/Frz Turkey: Mexico

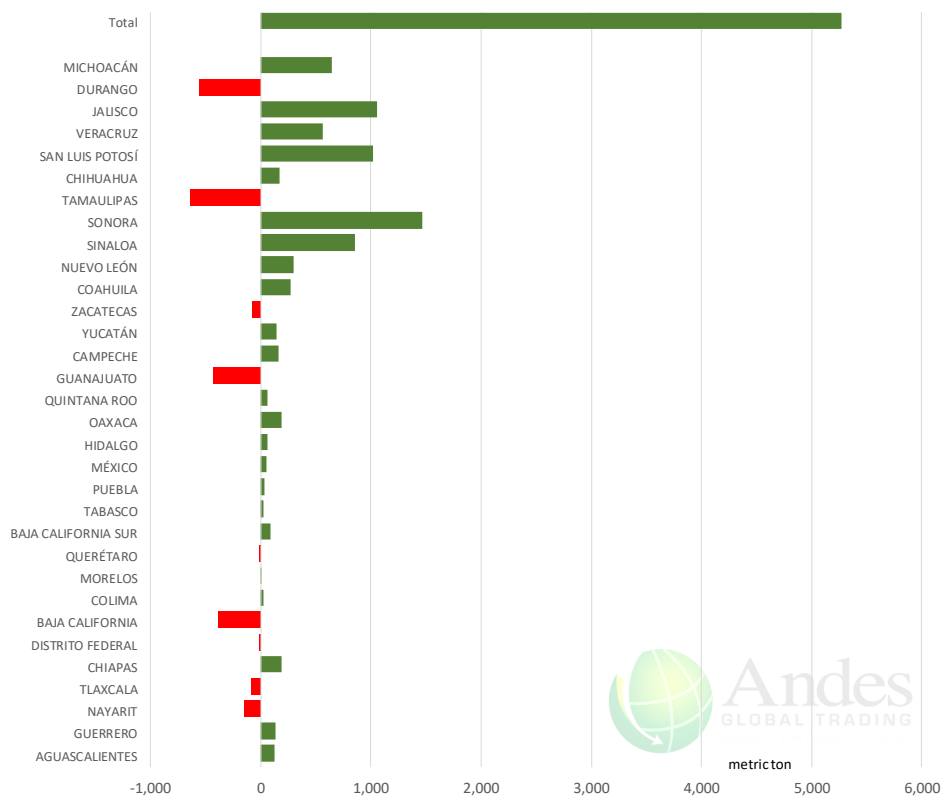
Source: USDA/FAS. Units: US Dollars. Analysis by: Steiner Consulting (800.526.4612)



Mexico Beef Production

CONTRIBUTION TO YEAR/YEAR CHANGE IN MEXICO BEEF PRODUCTION

METRIC TON. June 2018 VS. June 2017



Mexico Pork Prices

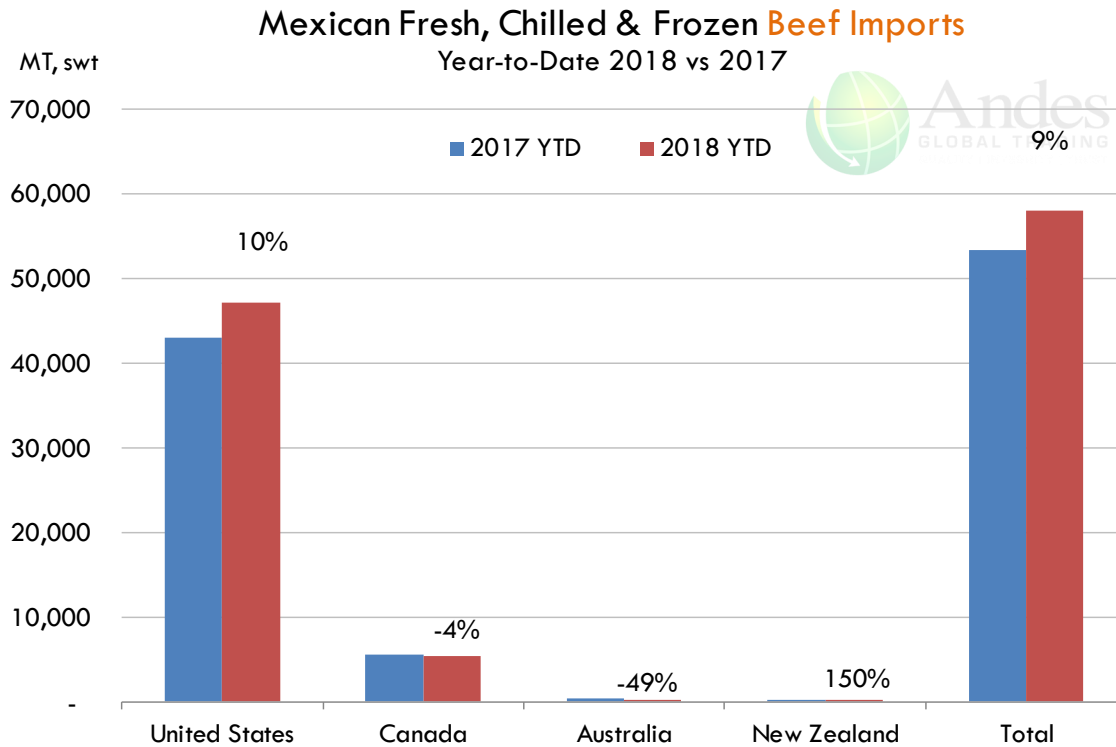
Precio Promedio Semanal de Cerdo en Obrador en Mexico

W/E: 27/7/2018	Ultimo	Anterior	Cambio
Peso / 1 USD	18.63	19.02	
	USD/KG	USD/KG	
Supremo LAB Rastro	1.80	1.75	0.06
Carne en Canal	2.76	2.68	0.08
Cabeza	1.50	1.45	0.06
Espaldilla	3.03	2.84	0.19
Pecho	3.68	3.60	0.08
Entrecot	2.87	2.76	0.11
Tocino	3.33	3.26	0.07
Pierna	3.33	3.13	0.20
Cuero	1.72	1.68	0.04

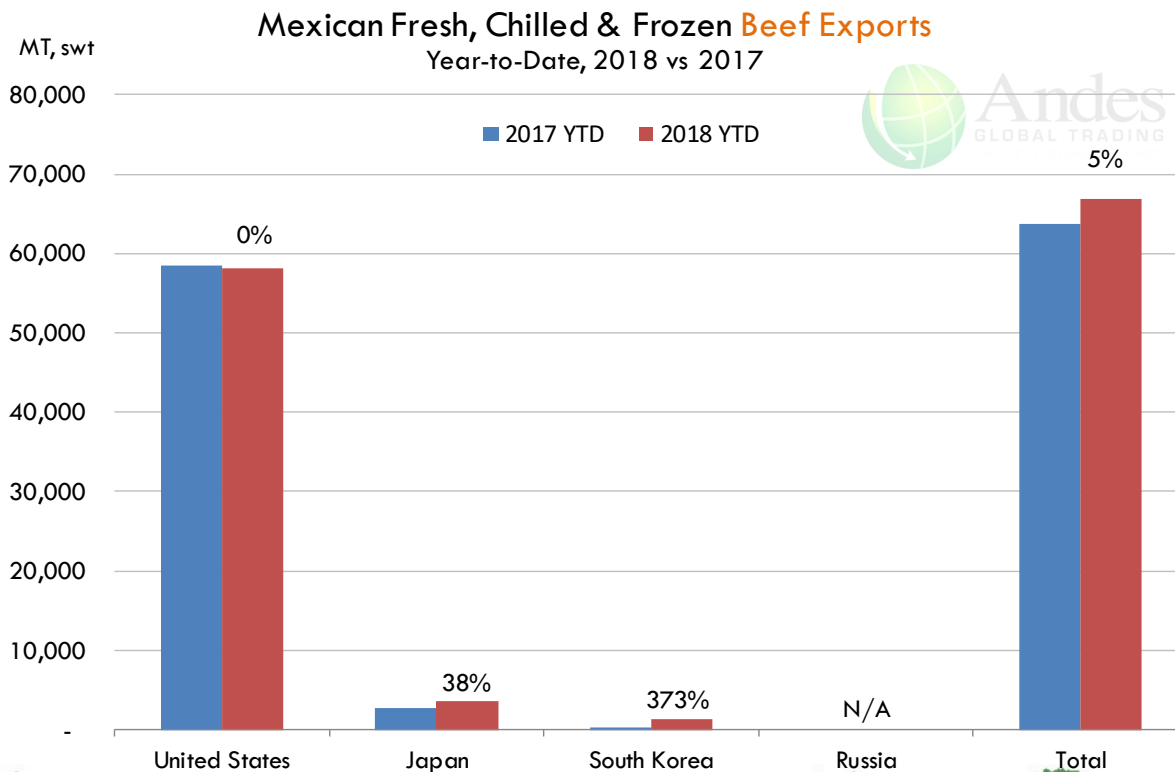
Fuente: SNIIM



Mexico Beef Imports



Mexico Beef Exports



PRECIO SEMANAL DEL CERDO EN PIE (USD/KG)

<i>Semana</i>	<i>Antioquia</i>	<i>Eje Cafetero</i>	<i>Valle</i>	<i>Caribe Norte</i>	<i>Bogotá</i>	<i>Nacional</i>	<i>COP/USD</i>
20-Apr-18	1.83	1.86	1.84	1.90	1.89	1.85	2761
27-Apr-18	1.78	1.78	1.80	1.84	1.83	1.79	2807
04-May-18	1.73	1.73	1.75	1.83	1.81	1.75	2840
11-May-18	1.72	1.71	1.74	1.77	1.78	1.74	2836
18-May-18	1.65	1.70	1.66	1.74	1.73	1.67	2918
25-May-18	1.64	1.65	1.69	1.75	1.75	1.67	2878
01-Jun-18	1.63	1.67	1.65	1.74	1.74	1.66	2868
08-Jun-18	1.59	1.65	1.64	1.75	1.72	1.63	2858
15-Jun-18	1.56	1.58	1.61	1.72	1.68	1.59	2895
22-Jun-18	1.54	1.58	1.56	1.70	1.67	1.58	2917
29-Jun-18	1.52	1.60	1.57	1.69	1.66	1.57	2930
06-Jul-18	1.55	1.63	1.60	1.73	1.70	1.60	2874
13-Jul-18	1.56	1.64	1.61	1.73	1.70	1.61	2859

Fuente: Asociación pork colombia

PRECIO SEMANAL DE LA CANAL CALIENTE DE CERDO (USD/KG)

<i>Semana</i>	<i>Antioquia</i>	<i>Eje Cafetero</i>	<i>Valle</i>	<i>Caribe Norte</i>	<i>Bogotá</i>	<i>Nacional</i>	<i>COP/USD</i>
20-Apr-18	2.46	2.43	2.45	2.50	2.52	2.47	2761
27-Apr-18	2.36	2.33	2.38	2.42	2.45	2.39	2807
04-May-18	2.30	2.26	2.33	2.37	2.40	2.34	2840
11-May-18	2.27	2.23	2.32	2.35	2.39	2.30	2836
18-May-18	2.18	2.24	2.20	2.26	2.31	2.22	2918
25-May-18	2.17	2.14	2.25	2.30	2.32	2.22	2878
01-Jun-18	2.15	2.21	2.21	2.31	2.33	2.21	2868
08-Jun-18	2.10	2.15	2.18	2.33	2.28	2.16	2858
15-Jun-18	2.05	2.06	2.15	2.19	2.23	2.11	2895
22-Jun-18	2.03	2.07	2.08	2.25	2.22	2.10	2917
29-Jun-18	2.01	2.10	2.08	2.23	2.21	2.09	2930
06-Jul-18	2.05	2.14	2.12	2.27	2.25	2.13	2874
13-Jul-18	2.06	2.15	2.13	2.29	2.26	2.14	2859












Fuente: Asociación pork colombia



Global Pork Pricing Trends

World Hog Prices, Various Styles, Dressed Wt. & Live Wt.

Prices in US\$ Equivalent

			This Week	Prev. Wk.	Year Ago		
			27-Jul-18	20-Jul-18	28-Jul-17		% ch.
	US Lean Hog Carcass, IA/MN, (US\$/kg)	carcass wt.	1.44	1.56	1.82	↓	-21%
	CAN Hog Carcass (US\$/kg)	carcass wt.	1.37	1.44	1.64	↓	-16%
	AUS BAC Carcass 80-95kg (US\$/kg)	carcass wt.	2.91	2.91	3.35	↓	-13%
	EU-28 Slaughter Pigs, 70-87 kg, (US\$/kg)	carcass wt.	1.68	1.70	1.99	↓	-16%
	Denmark Slaughter Pigs, 70-87 kg, (US\$/kg)	carcass wt.	1.48	1.50	1.81	↓	-18%
	Germany Slaughter Pigs, 70-87 kg, (US\$/kg)	carcass wt.	1.69	1.73	2.03	↓	-17%
	Spain Slaughter Pigs, 70-87 kg, (US\$/kg)	carcass wt.	1.76	1.78	2.06	↓	-14%
	France Slaughter Pigs, 70-87 kg, (US\$/kg)	carcass wt.	1.54	1.55	1.87	↓	-18%
	Argentina Live Hogs, (US\$/kg)	liveweight	0.91	0.91	1.05	↓	-13%
	Brazil Live Hogs, (US\$/kg)	liveweight	0.83	0.82	1.21	↓	-31%
	Chile Live Hogs, (US\$/kg)	liveweight	1.51	1.42	1.74	↓	-14%
	Mexico Live Pigs, (US\$/kg)	liveweight	1.68	1.63	1.76	↓	-5%
	China Hog Carcass, (US\$/kg)	carcass wt.	2.73	2.75	3.09	↓	-12%





Estados Unidos

Miami, FL 33137

2800 Biscayne Blvd. Suite 555

Teléfono: + 1 (305) 290-3720

Fax: +1 (313) 486-6784

E-mail: info@andesgt.com

México

Monterrey, NL, CP 64710

Av. Morones prieto # 2805

Pte, Col. Lomas de San Francisco

Oficinas 209-210

Teléfono: +52 554 770 7770

Colombia Bogotá D.C.

Teléfono: +57 (1) 382 6784

